

# GREEFF

CHRISTIE'S  
INTERNATIONAL REAL ESTATE



**Buff van Westenbrugge**  
082 441 3754  
buff@greeff.co.za



**Greeff Commercial and Industrial**  
082 441 3754

commercial@greeff.co.za

Contact Western Cape  
Commercial & Industrial

021 5182209

Unit A9 Spearhead Business Park

Montague Drive

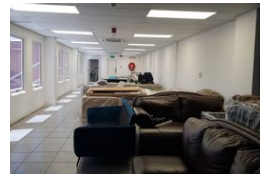
Montague Gardens, 7441

Western Cape South Africa

1,436m<sup>2</sup> Warehouse To Let in Brackenfell Central



Web Ref CL1569



R75 per m<sup>2</sup>

Gross Monthly Rental R107,700 Excl. VAT

0 0

## Industrial Property to Rent in Brackenfell Industrial

This open plan warehouse space is ideally situated in the highly sought after Northpoint Business Park.

This unit offers the following:

- Three-phase 160 amp power supply.
- 3x Roller shutter doors with dock levelers
- Ample parking
- Large office facilities.
- 24-hour on site security
- Located just off of the R300 and N1 Highway.
- Excellent ablution facilities

## Features

**Zoning** Industrial

**Interior**

Power 3 Phase Yes

**Exterior**

Security Yes

**Sizes**

Floor Size 1,436m<sup>2</sup>



<https://www.greeff.co.za>