

GREEFF

CHRISTIE'S
INTERNATIONAL REAL ESTATE



Greeff Commercial and Industrial
082 441 3754
commercial@greeff.co.za



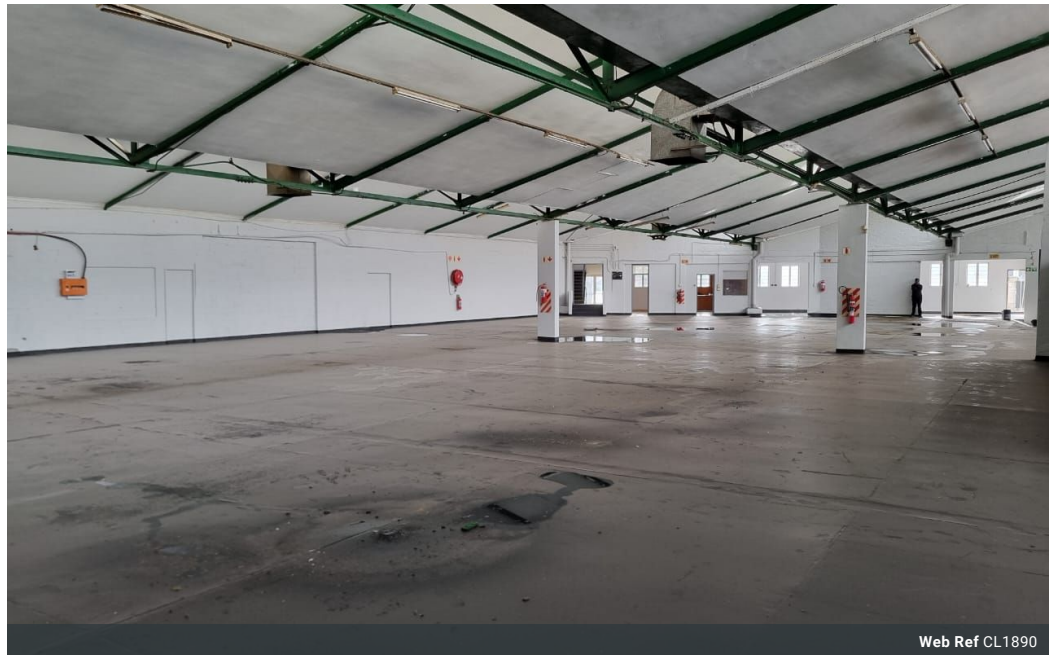
Greeff Commercial and Industrial
082 441 3754

commercial@greeff.co.za

Contact Western Cape
Commercial & Industrial

021 5182209

Unit A9 Spearhead Business Park
Montague Drive
Montague Gardens, 7441
Western Cape South Africa



Web Ref CL1890



R62 per m²

Gross Monthly Rental R62,583 Excl. VAT

0 0

Spacious Warehouse for Lease in Parow Industrial, Beaconvale

Explore this expansive 1300 sqm warehouse available for rent in the heart of Beaconvale, Parow. Perfectly situated in a prominent industrial area, this property offers versatile space tailored to a variety of operational needs.

The warehouse is designed to maximize functionality and comfort, featuring abundant natural light that enhances visibility and creates an inviting work environment. It includes dedicated office areas with a kitchenette, providing essential administrative support right on-site.

Designed with logistics in mind, the facility is equipped with a single roller shutter door for efficient loading and unloading. The 3.8-meter eaves height supports diverse storage solutions and facilitates vertical storage.

Features

Zoning Industrial

Interior	Exterior	Sizes
Power 3 Phase	Security	Floor Size
Power Amps	Yes	1,380m ²

