

# GREEFF

CHRISTIE'S  
INTERNATIONAL REAL ESTATE



**Richard Disley**  
064 537 4127  
richard@greeff.co.za



**Charmaine Hunter**  
064 531 5085  
charmaine@greeff.co.za



**Dewald Botha**  
083 650 0512  
dewald@greeff.co.za

Contact Whale Coast

028 3122241

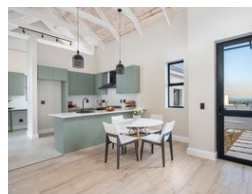
173 Main Road  
Hermanus  
Western Cape  
7200

Retirement Estate in Chanteclair

FEATURED



Web Ref ND77



## Chanteclair Estate



**Houses (10)**  
From R4,670,000  
Size from 178m² to 182m²

### Step Into Tomorrow: Where Cutting-Edge Design Meets Unmatched Comfort

Exclusive Mandate.

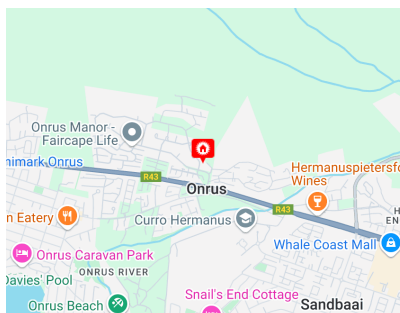
This is the first-ever boutique retirement estate in the Overberg. It also includes a small healthcare facility.

Welcome to Chanteclair Estate, where the charm of coastal living meets the elegance of Cape Vernacular architecture in the picturesque Onrusrivier. This new up-market residential development offers a unique opportunity to enjoy a timeless and serene community that harmonizes with the natural beauty of the area.

Only 10 brand new, cutting-edge, units are available. All are single level. Erf sizes start from 302sqm to 374sqm. The homes square meters start from 177.5 sqm to 182 sqm. Each home is...

### Features

- ✓ No TRANSFER DUTY
- ✓ Luxury Living
- ✓ Open Plan living
- ✓ Double Garage access
- ✓ Security
- ✓ Single Storey Homes
- ✓ Solar Geyser



<https://www.greeff.co.za>