



● Blouberg, Parklands

GREEFF

CHRISTIE'S
INTERNATIONAL REAL ESTATE



R1,299,000



Prime Investment Opportunity: Modern Residence on Parklands Main Road

Introducing a lucrative entry-level investment opportunity on Parklands Main Road. This ground floor apartment, featuring three bedrooms and two bathrooms, presents an ideal entry point into the property market for discerning investors. This well-maintained residence promises a strong return on investment with its desirable location and high-quality finishes. The spacious main bedroom with an ensuite shower, along with the two additional bedrooms, ensures maximum rental appeal and versatility. The open plan lounge offers a welcoming atmosphere for tenants, while the bespoke kitchen, complete with a centre island, adds a touch of luxury to the space. Sliding door access to the communal gardens enhances the property's allure, providing tenants

oasis to...



Web Ref RL22727
<https://www.greeff.co.za>

Features

Interior	Exterior	Sizes
Bedrooms 3	Carports/Parkings 3	Floor Size 83m ²
Bathrooms 2	Pool No	
Recep. Rooms 1		



Dianne Pentz
 084 513 2305
 dianne@greeff.co.za

Blouberg and Surrounds
 Unit A9 Spearhead Business Park, , Montague Drive,
 , Montague Gardens, 7441, , Western Cape South
 Africa



Where it counts

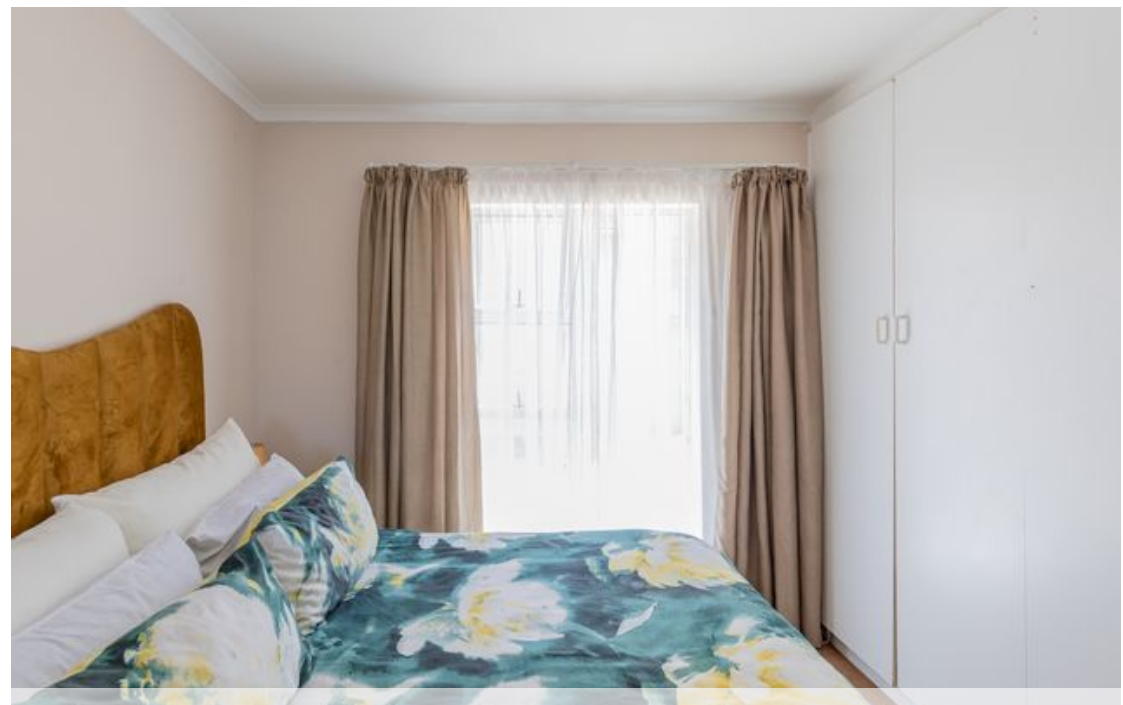
Exclusive Affiliates of Christie's International Real Estate. E & OE



● Blouberg, Parklands

GREEFF

CHRISTIE'S
INTERNATIONAL REAL ESTATE



Web Ref RL22727
<https://www.greeff.co.za>