



● Caledon, Caledon Rural

**GREEFF**



**CHRISTIE'S**  
INTERNATIONAL REAL ESTATE



**R123,000,000**

8 6

*A Rare Agricultural Gem*

Price: R123,000,000 Size: 1,160.27 ha Location: 8 km from Caledon, 35 min from Hermanus Title Deeds: 4 Farms of this caliber and potential are seldom available on the market. Nooitgedacht Farm offers an exceptional 823.6 ha of prime arable grain and grazing land, currently leased until 31 December 2025. Prime Location & Climate Situated just 8 km from Caledon, this farm benefits from excellent weather conditions, a moderate climate, and an average annual rainfall of 532 mm, with even higher levels near the mountain and catchment areas. Water & Electricity Infrastructure Water: - Two Overberg Water Points - Several dams with an interconnected pipeline system - The Klein Steenboks River runs through the property Electricity: - 100 kW Eskom supply for the main...



Web Ref RL24130  
<https://www.greeff.co.za>

**Features**

Interior	Exterior	Sizes
Bedrooms	8	Land Size
Bathrooms	6	Carports/Parkings
		Pool
		Yes
		1,160Ha



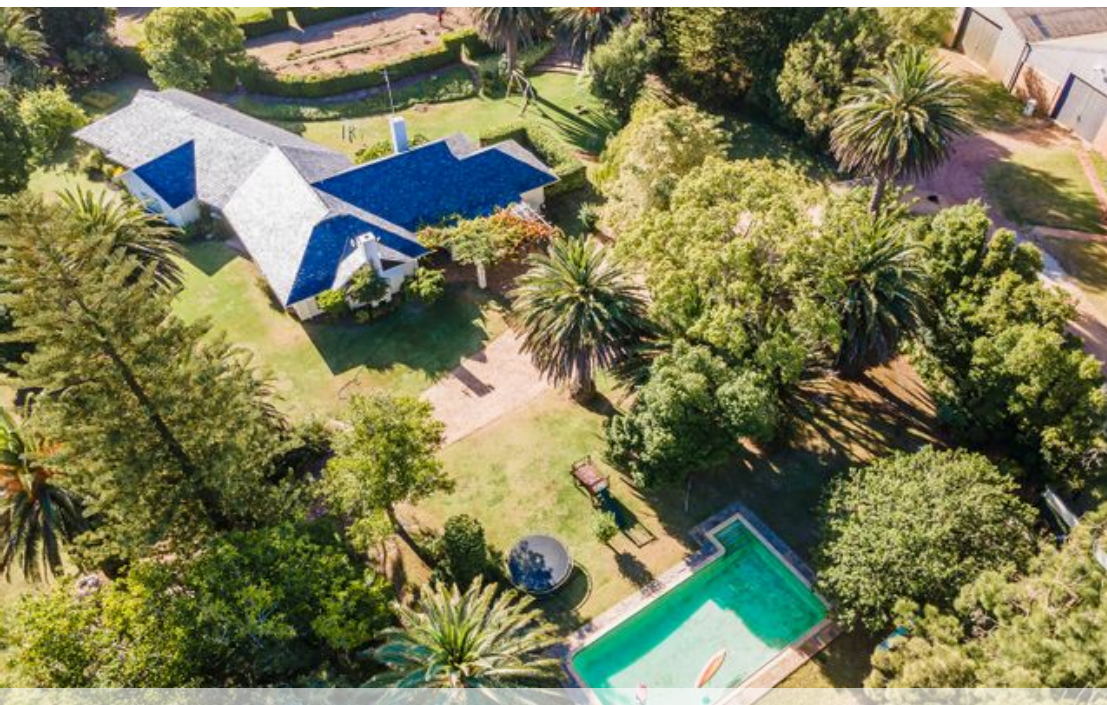
Annali Durr  
 082 323 6552  
[annali@greeff.co.za](mailto:annali@greeff.co.za)

Whale Coast  
 173 Main Road , Hermanus, Western Cape, 7200  
 (028) 3122241 | [whalecoast@greeff.co.za](mailto:whalecoast@greeff.co.za)



*Where it counts*

Exclusive Affiliates of Christie's International Real Estate. E & OE



● Caledon, Caledon Rural

**GREEFF**



**CHRISTIE'S**  
INTERNATIONAL REAL ESTATE



Web Ref RL24130  
<https://www.greeff.co.za>