



● Cape Town, **Adriaanse**

GREEFF

CHRISTIE'S
INTERNATIONAL REAL ESTATE



R1,595,000



A magnificent maisonette nestled in a sought-after area

This sun-filled contemporary and spacious maisonette is perfectly positioned in the heart of Harfield Village close to all amenities and leading schools. An open-plan living area is perfect for entertaining family and friends with a quaint courtyard off the lounge area. The kitchen has ample cupboard and counter space. Walk up the original wooden stairs that take you into two well-sized bedrooms, both with built-in cupboards. The family bathroom is right opposite the bedrooms with a separate toilet. The property has great security with electric fencing around the complex and one secure parking bay.

Features

Interior	Exterior	Sizes
Bedrooms 2	Carports/Parkings 2	Floor Size 90m ²
Bathrooms 1.5	Pool No	
Recep. Rooms 1		



Ammaarah Hendricks
071 728 9130
ammaarah@greeff.co.za



Ammaarah Hendricks
071 728 9130
ammaarah@greeff.co.za

Head Office
262 Main Road, Kenilworth, Cape Town
(021) 7634120 | communications@greeff.co.za

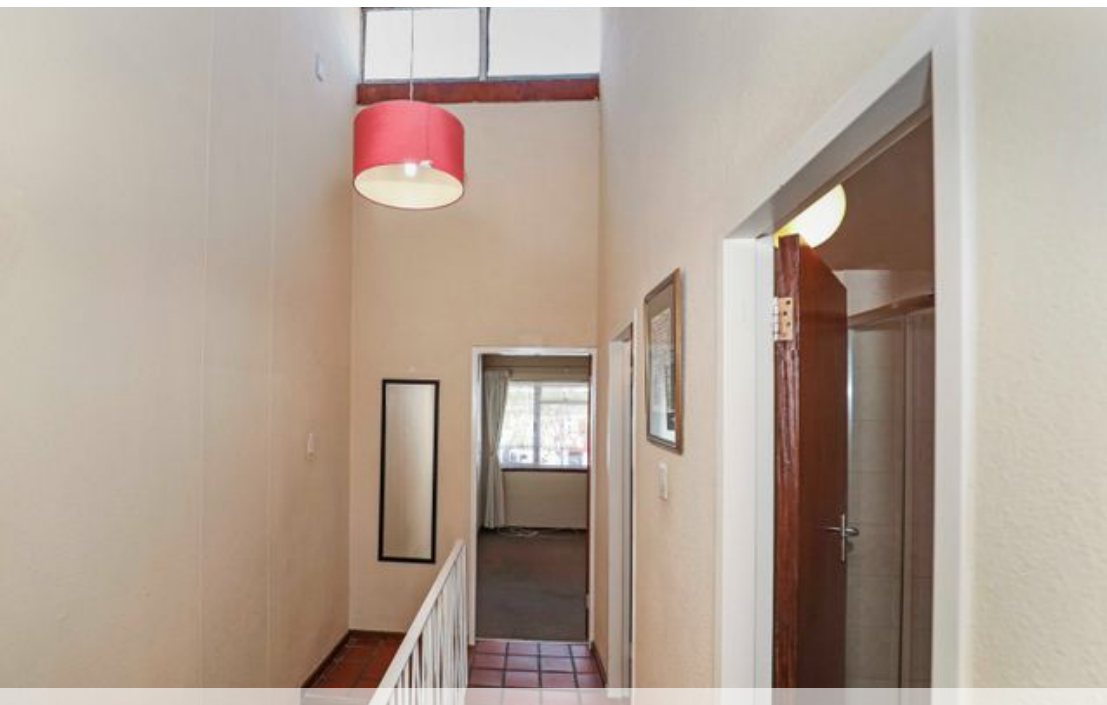


Web Ref 5510405
<https://www.greeff.co.za>



Where it counts

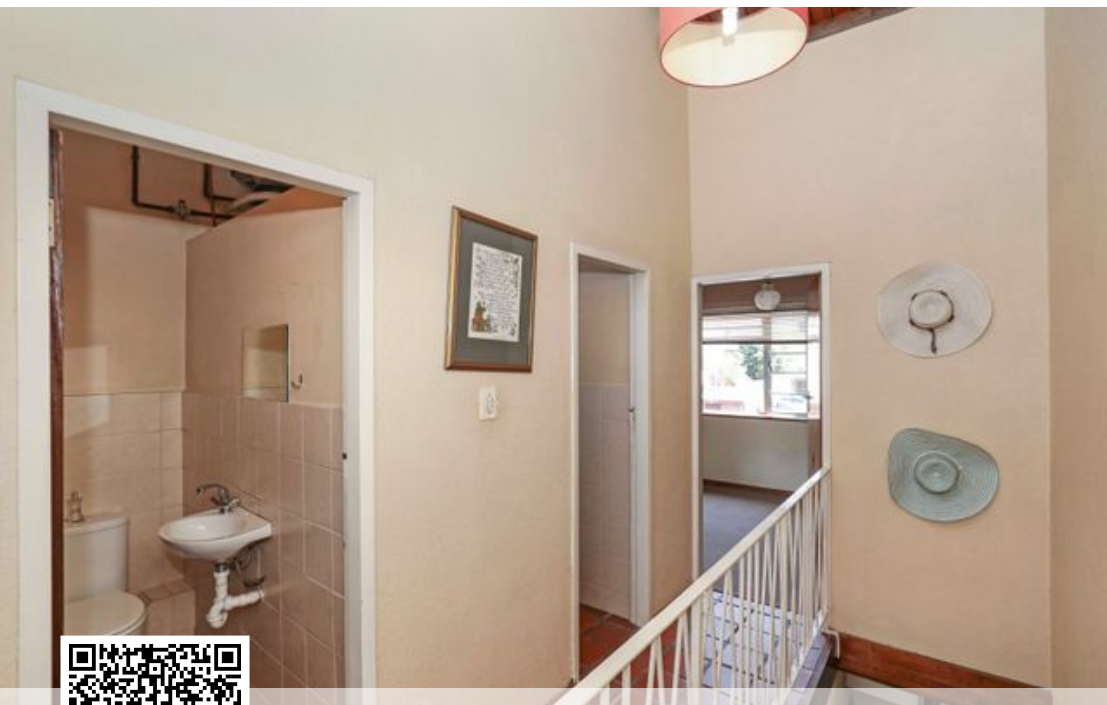
Exclusive Affiliates of Christie's International Real Estate. E & OE



● Cape Town, **Adriaanse**

GREEFF

CHRISTIE'S
INTERNATIONAL REAL ESTATE



Web Ref 5510405
<https://www.greeff.co.za>