



● Cape Town, **Camps Bay**

GREEFF

CHRISTIE'S
INTERNATIONAL REAL ESTATE



R8,999,999



Luxuriously Revamped Ocean-View Apartment in Sought-After Camps Bay

This brand-new, exquisitely refurbished 125m² apartment is situated in a prestigious and impeccably maintained complex within the highly desirable Camps Bay enclave. Perched on the scenic slopes of the Atlantic Seaboard, this residence is more than just a home—it's a retreat that offers breathtaking, unobstructed ocean views and a warm, sun-drenched ambiance throughout the year. Step inside to discover a seamless flow between the living and dining areas, designed to create a spacious open-plan environment that maximizes the stunning ocean vista. Large windows and a carefully planned layout ensure that these mesmerizing views are always in sight. The apartment features three exceptionally spacious bedrooms, ample cupboards and two finished marble...



Web Ref RL23128
<https://www.greeff.co.za>

Features

| Interior | Exterior | Sizes |
|----------------|---------------------|------------------------------|
| Bedrooms 3 | Carports/Parkings 2 | Floor Size 125m ² |
| Bathrooms 2 | Pool No | |
| Recep. Rooms 2 | | |
| Dining Rooms 1 | | |



Maud Papa
 072 539 8110
maud@greeff.co.za



Kurt Schultz
 083 6583 875
kurt@greeff.co.za

Head Office
 262 Main Road, Kenilworth, Cape Town
 (021) 7634120 | communications@greeff.co.za

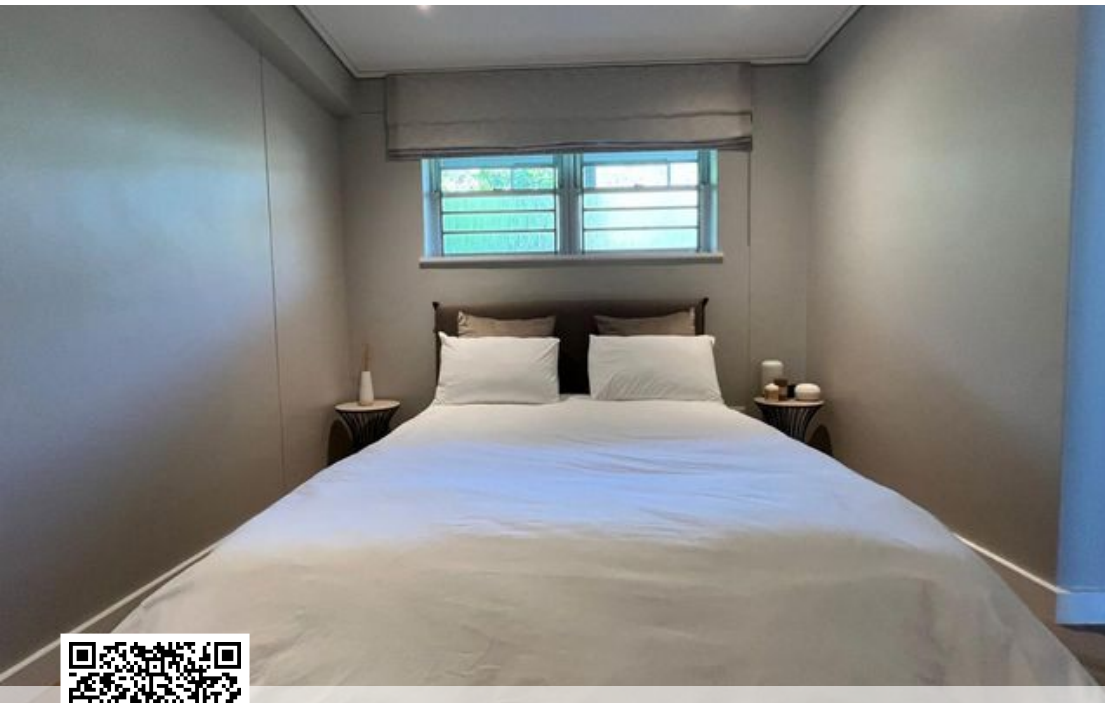


Where it counts

Exclusive Affiliates of Christie's International Real Estate. E & OE



● Cape Town, Camps Bay



Web Ref RL23128
<https://www.greeff.co.za>