



● Cape Town, **Camps Bay**

**GREEFF**



**CHRISTIE'S**  
INTERNATIONAL REAL ESTATE



**R95,000,000**

 10
  10.5  
 2

*COMFORT AND OPULENCE ABOUND AT THIS LUXURIOUS BOUTIQUE HOTEL*

Towering over Camps Bay with spectacular 360-degree views of the Atlantic Ocean, Lion's Head, Table Mountain and the neighbourhood below, this opulent boutique hotel has been meticulously designed to maximise the comfort and convenience of its guests. Set across multiple floors, it is complemented by six exceptional suites with full en suite bathrooms and a penthouse with two bedrooms, all offering gas fireplaces, coffee stations, private balconies and floor-to-ceiling windows that offer spectacular views of the ocean and mountains. Each suite is presented uniquely with considered design details and finishings, with an outdoor space designed to cater for year-round poolside entertaining. A ground floor, private pool suite features a secluded pool



Web Ref 5588838  
<https://www.greeff.co.za>

**Features**

Interior	Exterior	Sizes	
Bedrooms	10	Carports/Parkings	2
Bathrooms	10.5	Pool	Yes
Recep. Rooms	2	Floor Size	550m <sup>2</sup>
		Land Size	962m <sup>2</sup>



Maud Papa  
 072 539 8110  
[maud@greeff.co.za](mailto:maud@greeff.co.za)



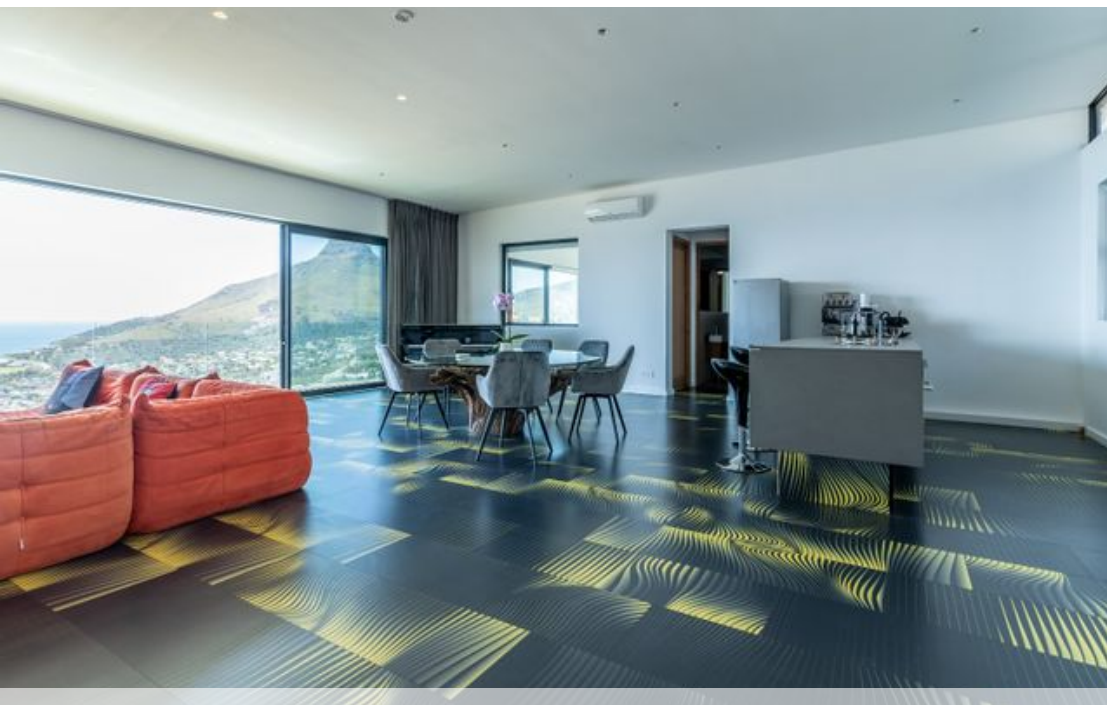
Kurt Schultz  
 083 6583 875  
[kurt@greeff.co.za](mailto:kurt@greeff.co.za)

Head Office  
 262 Main Road, Kenilworth, Cape Town  
 (021) 7634120 | [communications@greeff.co.za](mailto:communications@greeff.co.za)



*Where it counts*

Exclusive Affiliates of Christie's International Real Estate. E & OE



● Cape Town, Camps Bay

**GREEFF**

CHRISTIE'S  
INTERNATIONAL REAL ESTATE



Web Ref 5588838  
<https://www.greeff.co.za>