



● Cape Town, Camps Bay

**GREEFF**

CHRISTIE'S  
INTERNATIONAL REAL ESTATE



**R10,900,000**



*EXCLUSIVE, LUXURY LIVING IN A SECURE CAMPS BAY COMPLEX WITH MAGNIFICENT VIEWS*

Welcome to a world of unparalleled magnificence and coastal splendour. Set within an exclusive complex of only six residences, just 350m from the pristine Glen and Clifton beaches, this beautiful, three-bedroomed seaside residence will leave you breathless. Step into a realm of luxury as you enter, with immaculate finishes gracing every corner, creating an ambience of pure opulence. From the elegant flooring to the meticulous design details, no expense has been spared in ensuring that this home is the epitome of luxurious, modern living. The contemporary, open-plan lounge and dining room lead to the well-appointed kitchen with high-gloss cabinetry, stone countertops and premium appliances. The island is fitted with a prep bowl, an induction hob and



Web Ref RL19694  
<https://www.greeff.co.za>

**Features**

Interior	Exterior	Sizes
Bedrooms 3	Carports/Parkings 2	Floor Size 204m <sup>2</sup>
Bathrooms 2	Pool Yes	
Recep. Rooms 2		
Dining Rooms 1		



Maud Papa  
 072 539 8110  
[maud@greeff.co.za](mailto:maud@greeff.co.za)



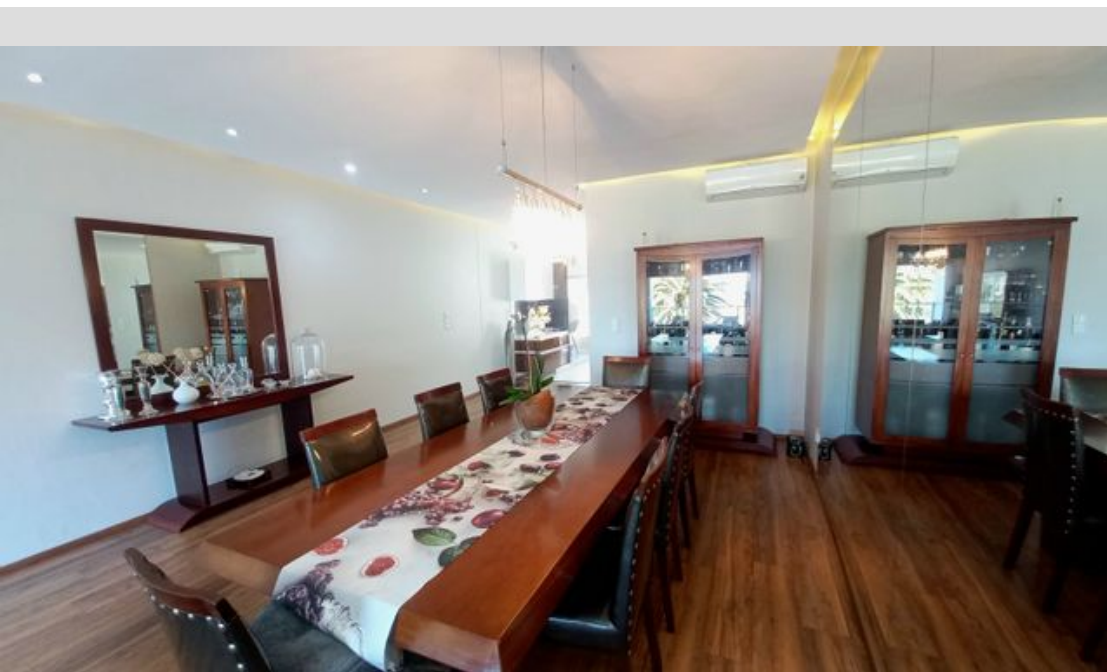
Kurt Schultz  
 083 6583 875  
[kurt@greeff.co.za](mailto:kurt@greeff.co.za)

Head Office  
 262 Main Road, Kenilworth, Cape Town  
 (021) 7634120 | [communications@greeff.co.za](mailto:communications@greeff.co.za)



*Where it counts*

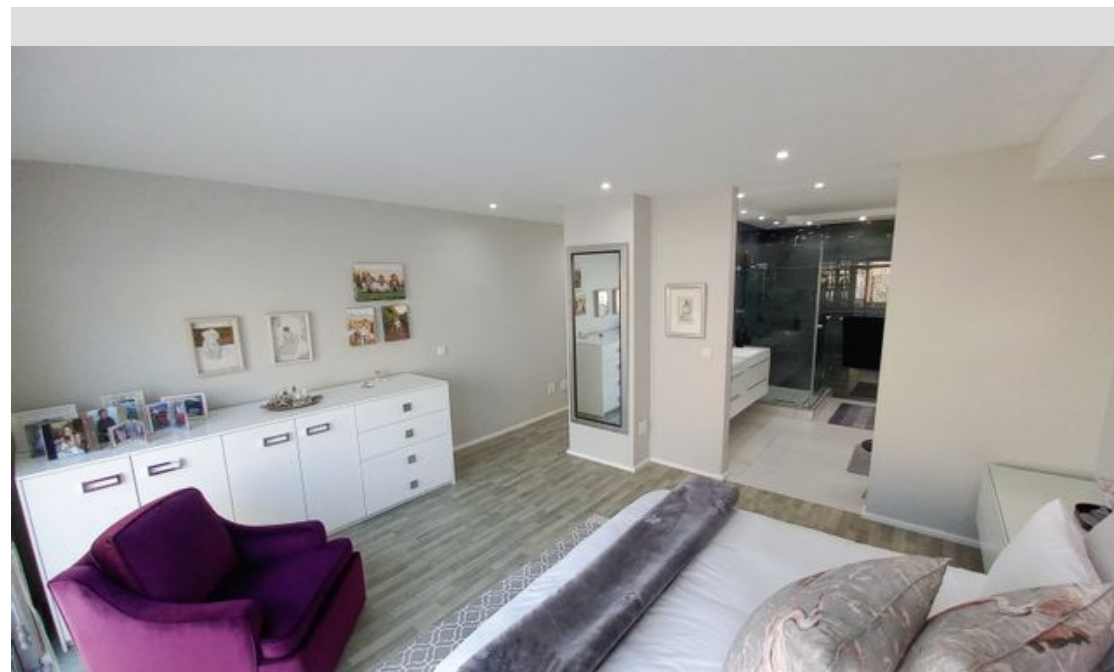
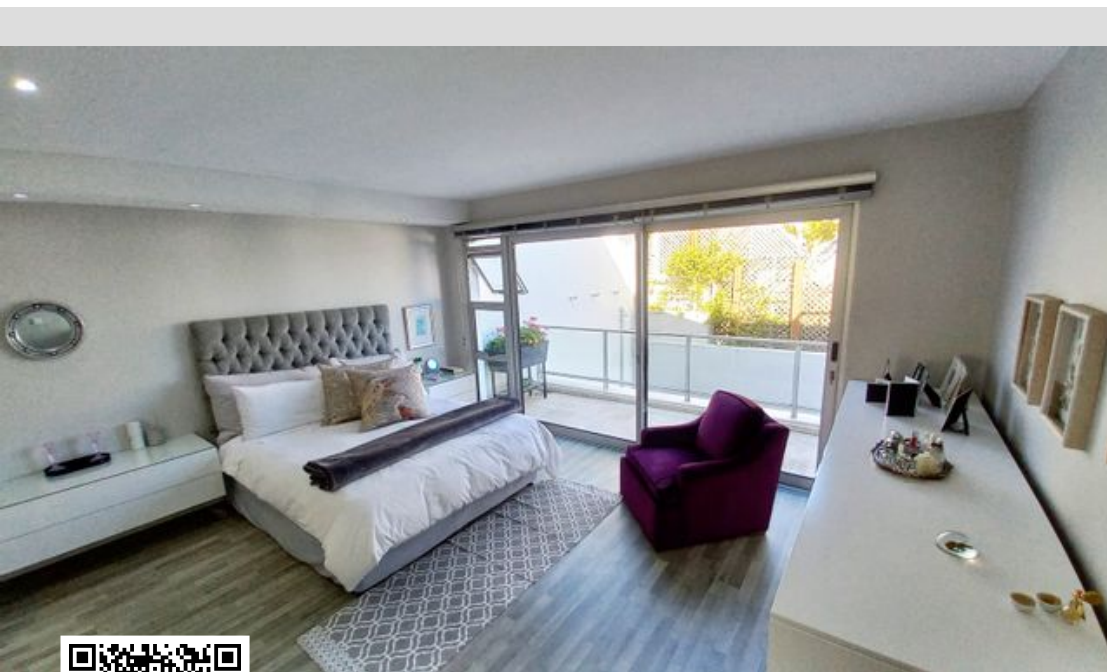
Exclusive Affiliates of Christie's International Real Estate. E & OE



● Cape Town, Camps Bay

**GREEFF**

**CHRISTIE'S**  
INTERNATIONAL REAL ESTATE



Web Ref RL19694  
<https://www.greeff.co.za>