



● Cape Town, **Claremont Upper**

**GREEFF**

CHRISTIE'S  
INTERNATIONAL REAL ESTATE





**R7,995,000**

 3
  2.5
  2

*Luxury, Security, and Convenience Await at Pine Terrace, Claremont Upper*

Experience the art of refined living at Pine Terrace, sophisticated eight freehold townhouses designed for those who value security, luxury, and ease. The brand-new townhouse with its three-storey layout maximises space while offering a seamless flow. The ground floor welcomes you with an inviting entrance hall and easy access to your double garage, equipped with a generous storage area for life's extras. On the first floor, you'll find a spacious open-plan kitchen, dining, and living area that extends naturally to the outdoor courtyard, complete with a covered entertainment veranda—perfect for year-round outdoor enjoyment. Venture upstairs to the top floor, where three spacious bedrooms and two bathrooms promise a personal retreat, with the

complete with...



Web Ref RL23293  
<https://www.greeff.co.za>

**Features**

Interior	Exterior	Sizes			
Bedrooms	3	Carports/Parkings	2	Floor Size	230m <sup>2</sup>
Bathrooms	2.5	Pool	Yes	Land Size	191m <sup>2</sup>
Recep. Rooms	2				
Dining Rooms	1				



Daniele Matheson  
 083 556 9391  
[dani@greeff.co.za](mailto:dani@greeff.co.za)



Charles Silbert  
 082 555 4286  
[charles@greeff.co.za](mailto:charles@greeff.co.za)

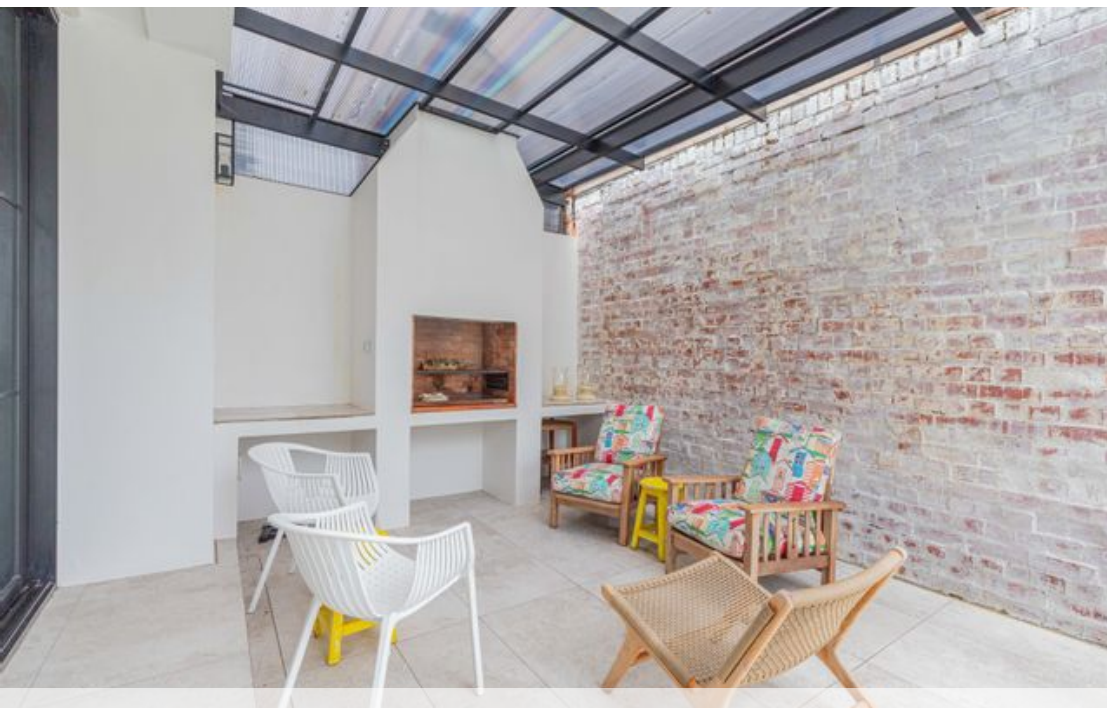
Head Office  
 262 Main Road, Kenilworth, Cape Town  
 (021) 7634120 | [communications@greeff.co.za](mailto:communications@greeff.co.za)



*Where it counts*

Exclusive Affiliates of Christie's International Real Estate. E & OE





● Cape Town, **Claremont Upper**

**GREEFF**

**CHRISTIE'S**  
INTERNATIONAL REAL ESTATE





Web Ref RL23293  
<https://www.greeff.co.za>