



● Cape Town, **De Waterkant**

**GREEFF**

**CHRISTIE'S**  
INTERNATIONAL REAL ESTATE



**R2,850,000**



## *Stylish Apartment in Prime De Waterkant Location*

Exclusive Sole Mandate: This stunning apartment in the highly sought-after De Waterkant area is a rare investment opportunity. Boasting breathtaking views of Table Mountain, Lions Head and Signal Hill. The property offers the perfect blend of style, convenience, and location. Modern & Industrial Design: With abundant natural light and a sleek aesthetic, this apartment is as functional as it is beautiful. Prime Location: Easy walking distance to Cape Town's hotspots, including the V&A Waterfront, City Centre, and the cultural Bo-Kaap. Airbnb Friendly: Perfect for short-term letting and capitalising on Cape Town's thriving tourism market. Convenient Parking: Includes one parking bay located on the same floor for ease of access. Property Details: Size: 62m<sup>2</sup> Rates:...



Web Ref RL23931  
<https://www.greeff.co.za>

## Features

Interior	Exterior	Sizes
Bedrooms	1	Carports/Parkings
Bathrooms	1	Pool
Recep. Rooms	1	No
		Floor Size
		62m <sup>2</sup>



Matthew Venn  
 0760538683  
[mattvenn@greeff.co.za](mailto:mattvenn@greeff.co.za)



Shameela Bhagoo  
 072 982 8446  
[shameela@greeff.co.za](mailto:shameela@greeff.co.za)

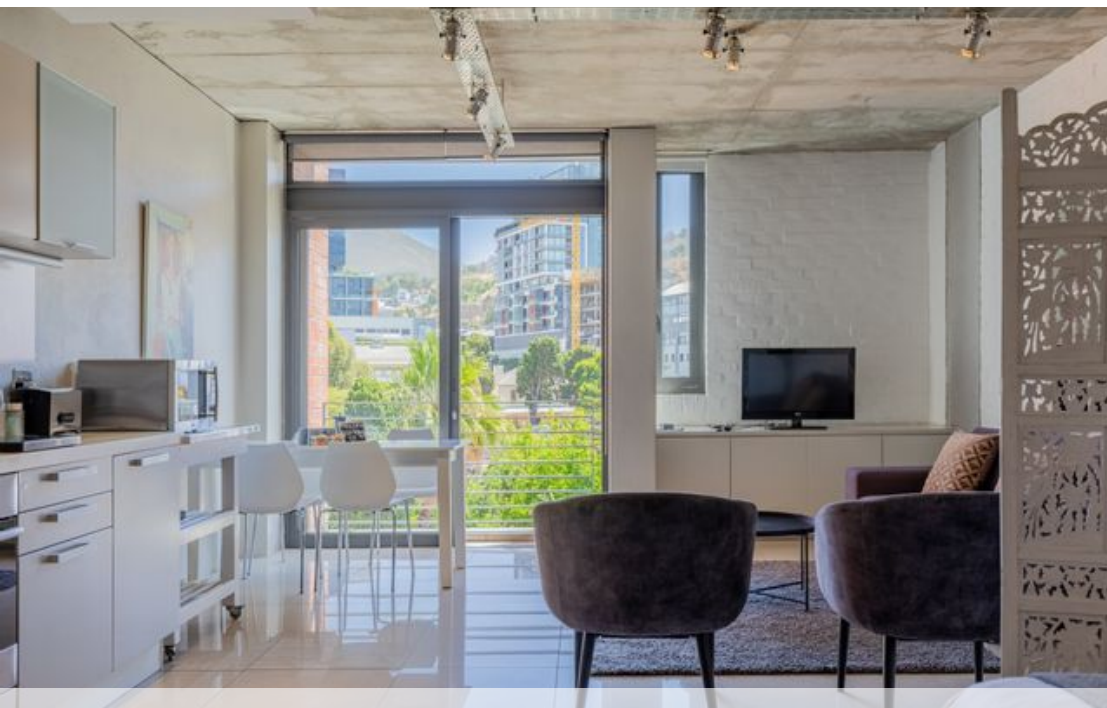
Head Office  
 262 Main Road, Kenilworth, Cape Town  
 (021) 7634120 | [communications@greeff.co.za](mailto:communications@greeff.co.za)

**GREEFF**

CHRISTIE'S  
 INTERNATIONAL REAL ESTATE

*Where it counts*

Exclusive Affiliates of Christie's International Real Estate. E & OE



● Cape Town, De Waterkant



Web Ref RL23931  
<https://www.greeff.co.za>