



● Cape Town, De Waterkant

GREEFF

CHRISTIE'S
INTERNATIONAL REAL ESTATE



R3,400,000



Stylish One-Bedroom Apartment with Stunning Views: The Signature, De Waterkant:

Exclusive Sole Mandate: We are excited to present this exquisite one bedroom, 47sqm apartment with a 7sqm balcony in the highly sought-after The Signature building, located in the vibrant heart of De Waterkant. Offering a perfect balance of modern design and comfort, this apartment is an ideal choice for those seeking a stylish city living experience. Key Features Include: Spacious One-Bedroom Layout: A well-designed, open-plan living area seamlessly connects the living room, kitchen, and dining space, offering a generous flow that maximizes space and light. Private Balcony with Panoramic Views: Enjoy breathtaking views of Table Mountain, Lions Head, and Signal Hill from your private balcony. It's the perfect place to relax and unwind after a busy day,



Web Ref RL24158
<https://www.greeff.co.za>

Features

Interior	Exterior	Sizes
Bedrooms 1	Carports/Parkings 0	Floor Size 54m ²
Bathrooms 1	Pool No	
Recep. Rooms 1		



Matthew Venn
 0760538683
mattvenn@greeff.co.za



Shameela Bhagoo
 072 982 8446
shameela@greeff.co.za

Head Office
 262 Main Road, Kenilworth, Cape Town
 (021) 7634120 | communications@greeff.co.za



Where it counts

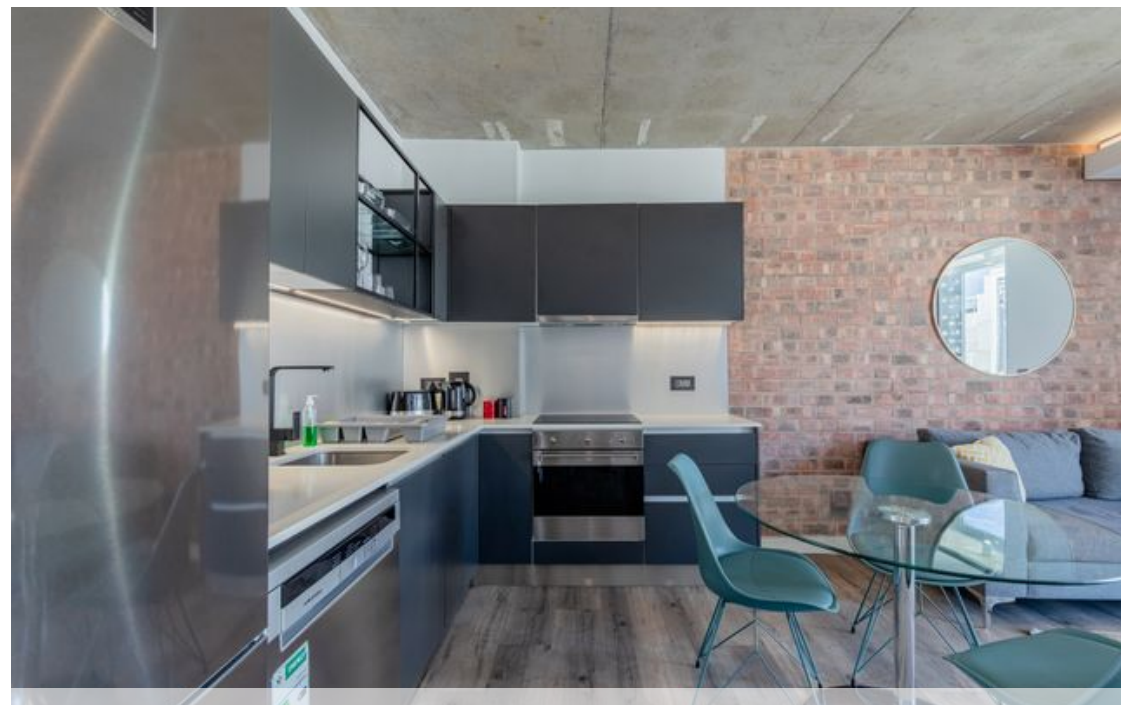
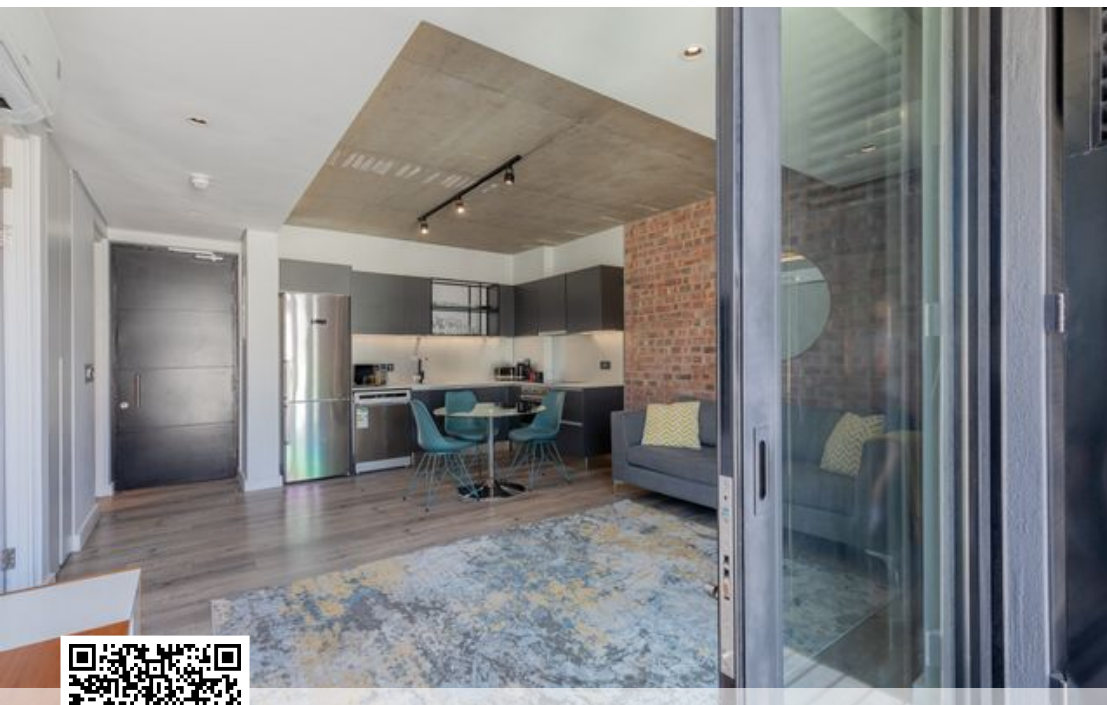
Exclusive Affiliates of Christie's International Real Estate. E & OE



● Cape Town, De Waterkant

GREEFF

CHRISTIE'S
INTERNATIONAL REAL ESTATE



Web Ref RL24158
<https://www.greeff.co.za>