



● Cape Town, De Waterkant

GREEFF

CHRISTIE'S
INTERNATIONAL REAL ESTATE



R8,000,000



Modern Inner-City Lifestyle: A Slice of Luxury in Cape Town

Exclusive Sole Mandate. This exceptional triplex penthouse, located on the 16th floor, offers panoramic views of the city as well as Cape Town's most iconic landmarks, including Lion's Head, and Table Mountain. The residence is designed for those who appreciate both elegance and stunning natural beauty, offering a sophisticated urban lifestyle. From every level, enjoy breathtaking vistas that stretch as far as the eye can see – day or night. The views are particularly spectacular in the evening, with the city lights twinkling below and the mountains towering in the distance. With a total floor area of 87sqm, including a private rooftop terrace of 12sqm, this triplex offers ample space across three levels, allowing for an open-plan, modern living experience. Enter...



Web Ref RL23873
<https://www.greeff.co.za>

Features

Interior	Exterior	Sizes
Bedrooms 2	Carports/Parkings 2	Floor Size 87m ²
Bathrooms 2	Pool No	
Recep. Rooms 1		



Matthew Venn
 0760538683
mattvenn@greeff.co.za



Shameela Bhagoo
 072 982 8446
shameela@greeff.co.za

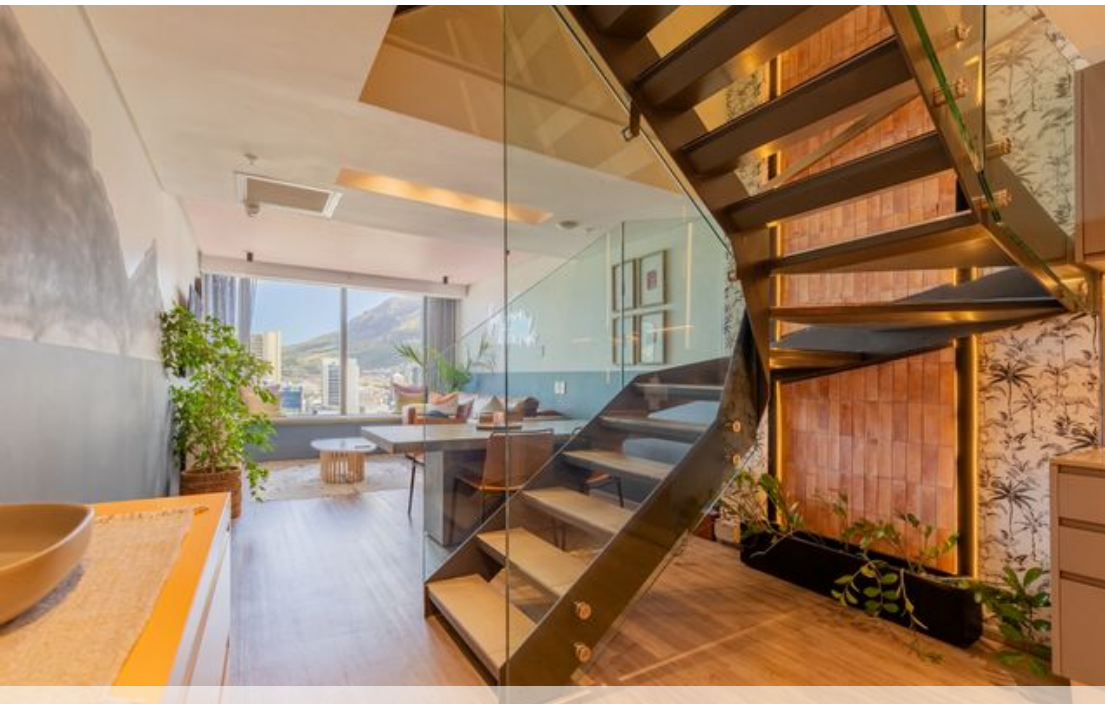
Head Office
 262 Main Road, Kenilworth, Cape Town
 (021) 7634120 | communications@greeff.co.za

GREEFF

CHRISTIE'S
 INTERNATIONAL REAL ESTATE

Where it counts

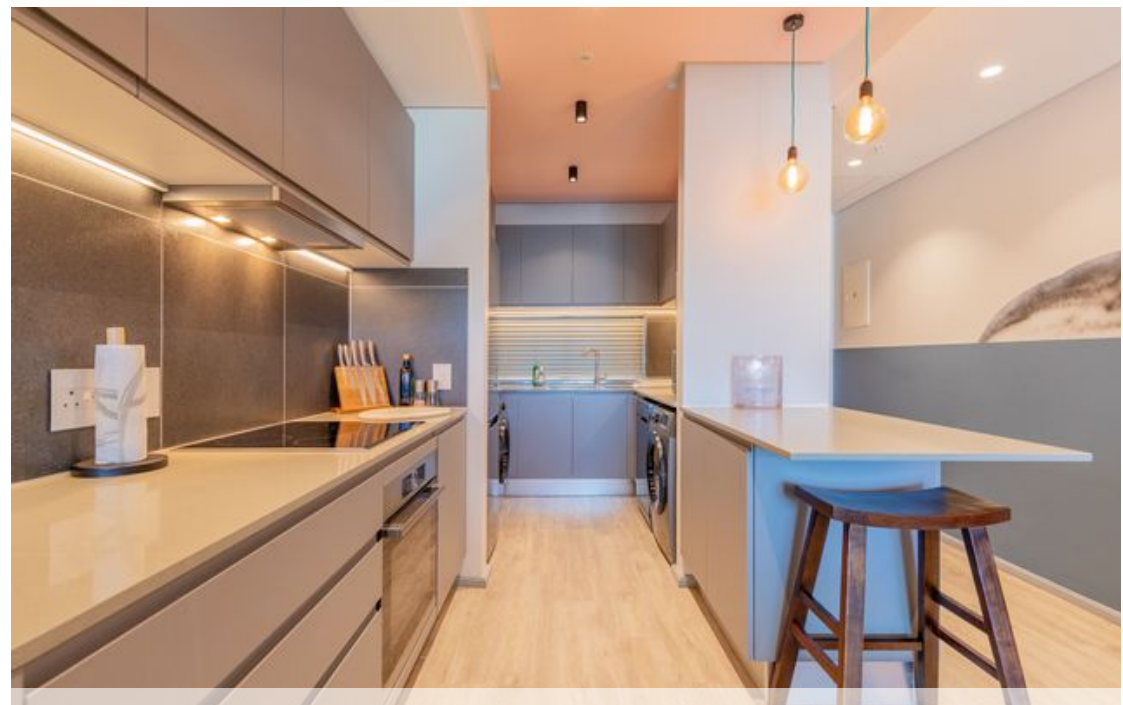
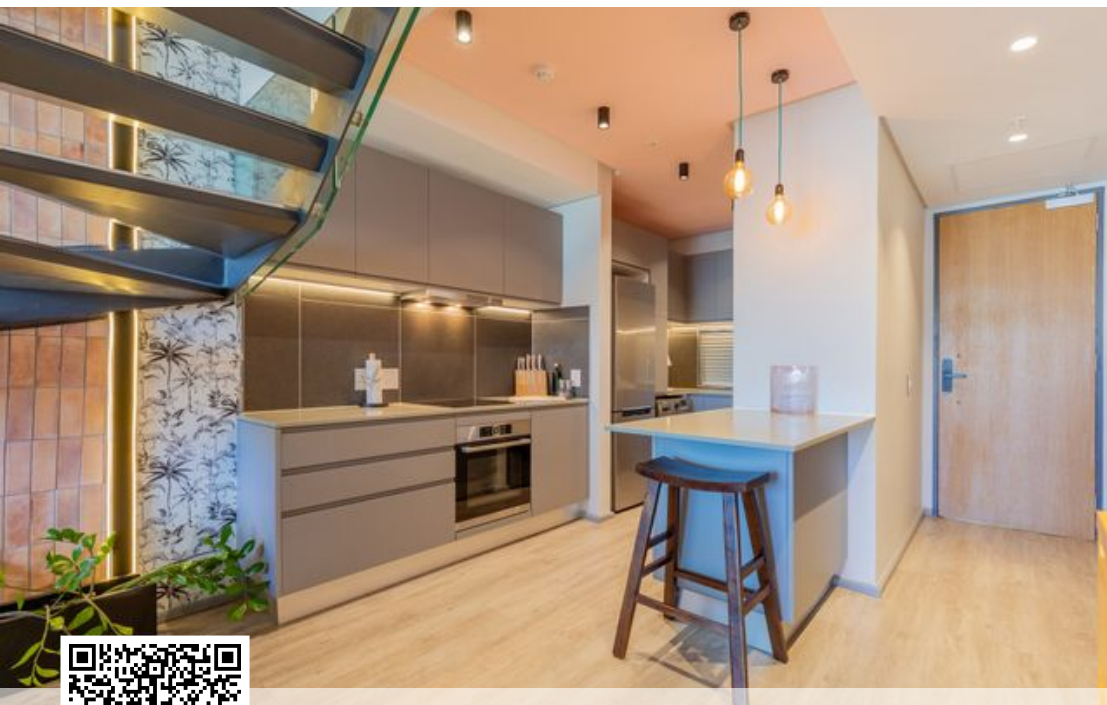
Exclusive Affiliates of Christie's International Real Estate. E & OE



● Cape Town, De Waterkant

GREEFF

CHRISTIE'S
INTERNATIONAL REAL ESTATE



Web Ref RL23873
<https://www.greeff.co.za>