



● Cape Town, **Kenilworth Upper**

**GREEFF**



**CHRISTIE'S**  
INTERNATIONAL REAL ESTATE



**R9,750,000**



*Timeless Victorian Beauty with a Modern Twist.*

EXCLUSIVE SOLE MANDATE This beautifully restored Victorian home in Kenilworth Upper blends heritage with modern convenience. The entrance leads to two sunlit rooms with bay windows, currently used as home offices, which can also serve as a lounge or study. The grand dining room with fireplace features high ceilings and opens onto a veranda and garden, offering an ideal space for both indoor and outdoor gatherings. The modern eat-in kitchen includes a central island, gas hob, dual ovens, a pantry doubling as a wine cellar, and a separate laundry area. The lounge features a wood-burning fireplace and large windows overlooking the garden. The master suite includes plush carpeting, a modern en suite bathroom with double vanities, a walk-in shower, and a bath, alongside...



Web Ref RL23211  
<https://www.greeff.co.za>

**Features**

Interior	Exterior	Sizes
Bedrooms 4	Carports/Parkings 3	Floor Size 306m <sup>2</sup>
Bathrooms 3	Pool No	Land Size 701m <sup>2</sup>
Recep. Rooms 3		
Dining Rooms 1		



Daniele Matheson  
 083 556 9391  
[dani@greeff.co.za](mailto:dani@greeff.co.za)



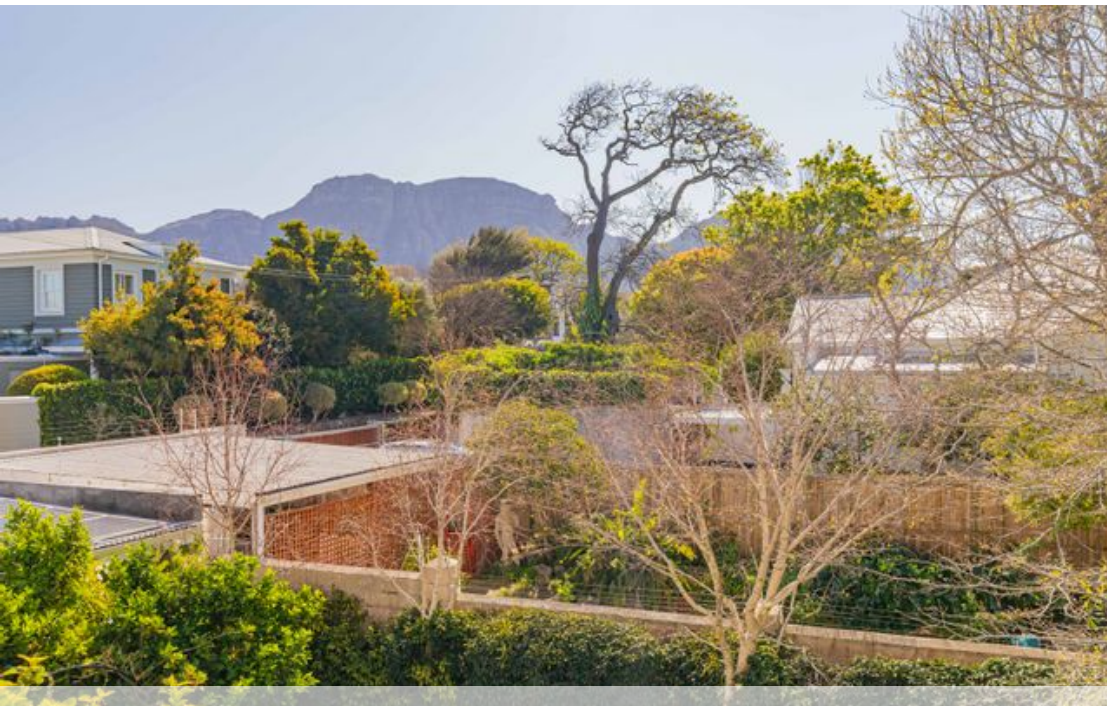
Charles Silbert  
 082 555 4286  
[charles@greeff.co.za](mailto:charles@greeff.co.za)

Head Office  
 262 Main Road, Kenilworth, Cape Town  
 (021) 7634120 | [communications@greeff.co.za](mailto:communications@greeff.co.za)



*Where it counts*

Exclusive Affiliates of Christie's International Real Estate. E & OE

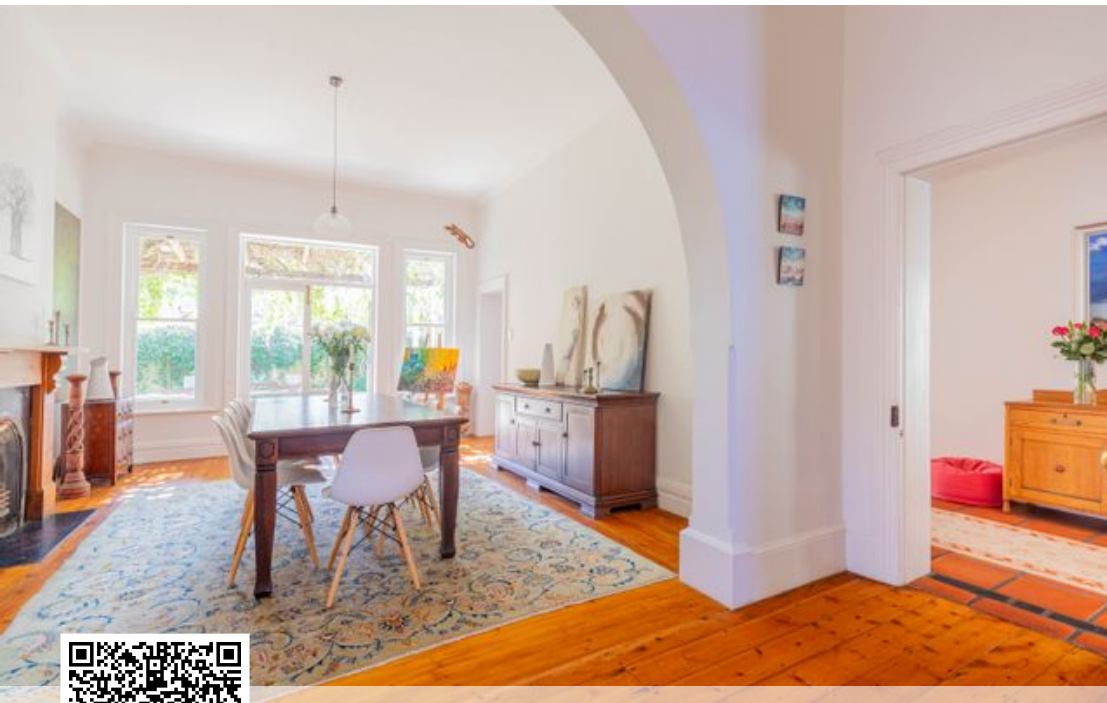


● Cape Town, **Kenilworth Upper**

**GREEFF**



**CHRISTIE'S**  
INTERNATIONAL REAL ESTATE



Web Ref RL23211  
<https://www.greeff.co.za>