



● Cape Town, **Kenilworth Upper**

GREEFF

CHRISTIE'S
INTERNATIONAL REAL ESTATE



R8,250,000

 4
  3.5
  6

Large, Modern Family Home, Best Address.

Large, modern family home with top schools on your doorstep. No levies. Rare opportunity in the best part of Kenilworth Upper. Family home with views. Add your finishing touches. Opportunity to develop into double storey. Under one minute from Western Province Preparatory School and Herschel. Borders prestigious Wytham Estate. In the very best part of Kenilworth Upper, you will find this large, modern, 90's built single storey family home with mountain views, this North facing home is filled with ample natural light which compliments the spacious interior. A muted colour palette combined with tiled flooring which lends a modern feeling to the home. The open plan lounge\dining room area boasts a beautifully fitted kitchen with central island. Top of the range...



Web Ref RL23595
<https://www.greeff.co.za>

Features

Interior	Exterior	Sizes
Bedrooms 4	Carports/Parkings 6	Land Size 813m ²
Bathrooms 3.5	Pool Yes	
Recep. Rooms 2		
Dining Rooms 1		



Andre Beyers
 082 566 6492
andre@greeff.co.za



Ross McLagan
 0784865940
ross@greeff.co.za

Head Office
 262 Main Road, Kenilworth, Cape Town
 (021) 7634120 | communications@greeff.co.za

GREEFF

CHRISTIE'S
INTERNATIONAL REAL ESTATE

Where it counts

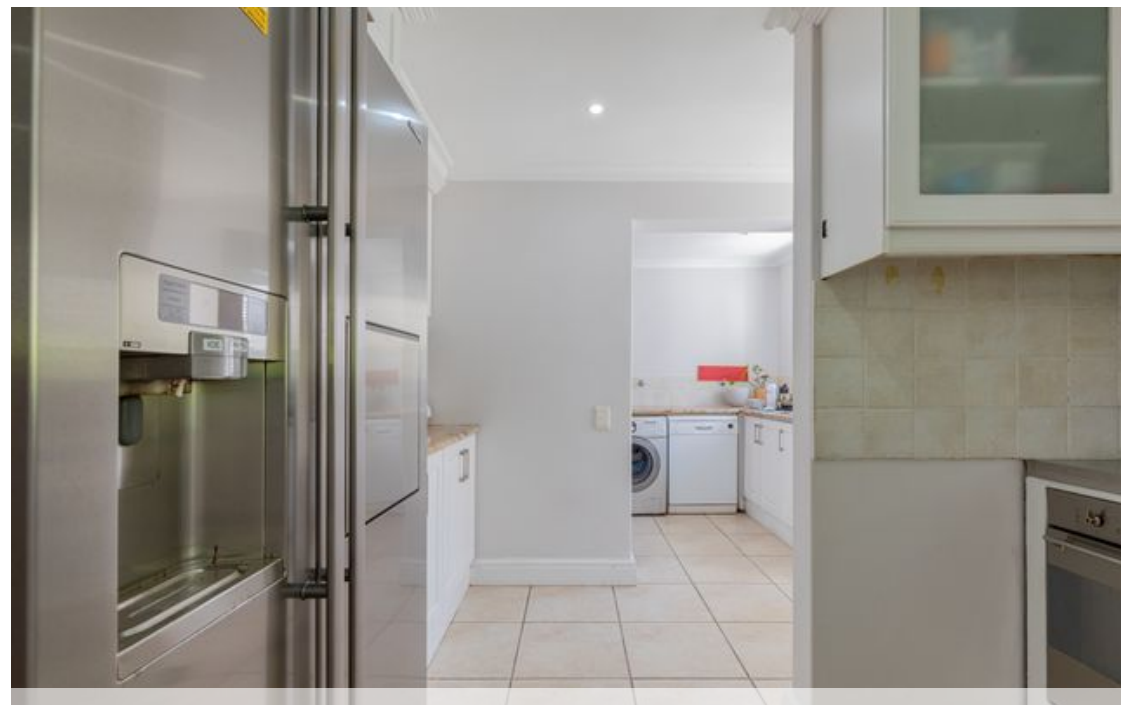
Exclusive Affiliates of Christie's International Real Estate. E & OE



● Cape Town, Kenilworth Upper

GREEFF

CHRISTIE'S
INTERNATIONAL REAL ESTATE



Web Ref RL23595
<https://www.greeff.co.za>