



● Cape Town, Maitland

**GREEFF**

CHRISTIE'S  
INTERNATIONAL REAL ESTATE



**R700,000**



*Affordable Two-Bedroom Apartment in Spencer on Royal Maitland*

Discover an excellent investment opportunity or a cosy home for a small family at Spencer on Royal in the heart of Maitland. This affordable two-bedroom apartment offers a bright and open-plan living space, perfect for modern living. As you step through the front door, you are welcomed into the galley kitchen and open planned living room area. The apartment boasts loads of natural light streaming through the windows, creating a warm and inviting atmosphere. While the property does need some work, its affordable price makes it an ideal canvas for your personal touch and modern upgrades. The layout includes two comfortable bedrooms, providing ample space for a small family or tenants. The bathroom is conveniently located to serve both bedrooms



Web Ref RL22927  
<https://www.greeff.co.za>

**Features**

Interior	Exterior	Sizes
Bedrooms 2	Carports/Parkings 1	Floor Size 54m <sup>2</sup>
Bathrooms 1	Pool No	
Recep. Rooms 1		



Ryan Petersen  
 081 566 5226  
[ryanp@greeff.co.za](mailto:ryanp@greeff.co.za)



Brent Julie  
 0632068983  
[brent@greeff.co.za](mailto:brent@greeff.co.za)

Head Office  
 262 Main Road, Kenilworth, Cape Town  
 (021) 7634120 | [communications@greeff.co.za](mailto:communications@greeff.co.za)



*Where it counts*

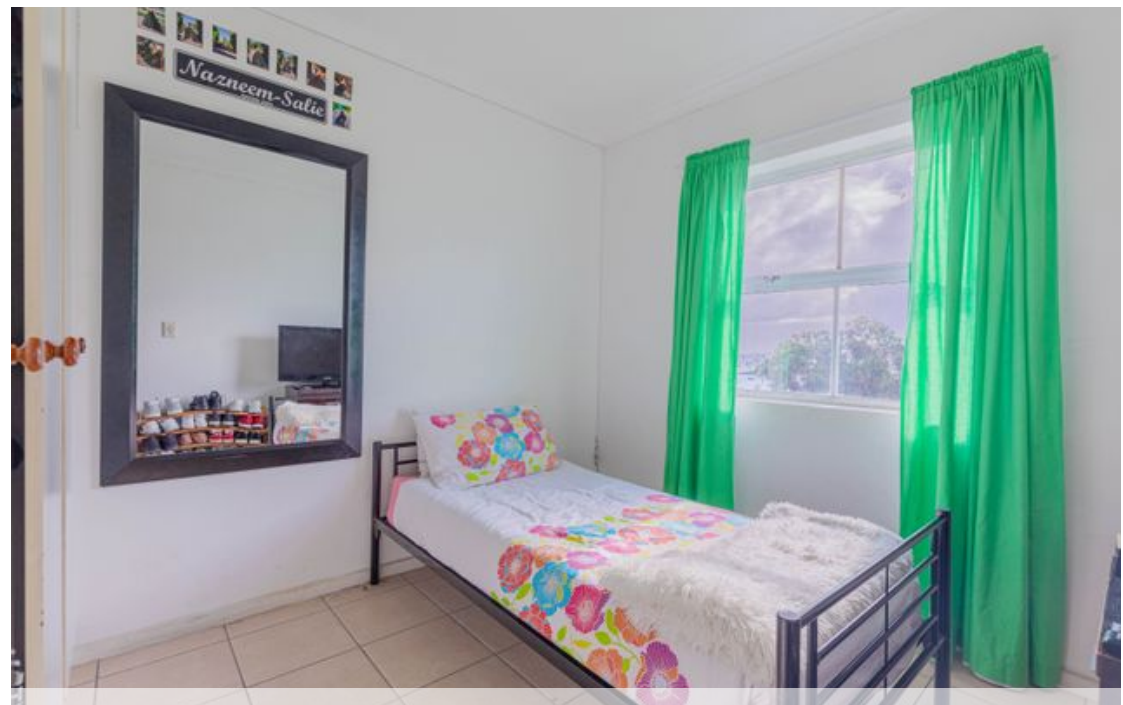
Exclusive Affiliates of Christie's International Real Estate. E & OE



● Cape Town, Maitland

**GREEFF**

**CHRISTIE'S**  
INTERNATIONAL REAL ESTATE



Web Ref RL22927  
<https://www.greeff.co.za>