



● Cape Town, Mouille Point

GREEFF

CHRISTIE'S
INTERNATIONAL REAL ESTATE



R56,400,000

 2
  2.5
  4

Luxurious Garden Apartment on Granger Bay's Water's Edge

Welcome to an extraordinary ground-floor garden apartment that effortlessly embodies luxury, sophistication, and waterfront living at its finest. Situated on the iconic Platinum Mile, this one-of-a-kind residence offers the perfect blend of modern elegance, privacy, and breath taking marina views, right on the seaside of Granger Bay. From the moment you step inside, you'll be captivated by the meticulous attention to detail and the flawless design that defines this exceptional home. The seamless flow between indoor and outdoor spaces is a testament to its thoughtful layout, allowing you to transition effortlessly from the comfort of the indoors to the tranquillity of your private outdoor oasis. The covered and open patios extend out to a private marina boardwalk,...



Web Ref RL23285
<https://www.greeff.co.za>

Features

Interior	Exterior	Sizes
Bedrooms	2	Floor Size
Bathrooms	2.5	Land Size
Recep. Rooms	2	
Dining Rooms	1	
	Carports/Parkings	4
	Pool	Yes
		277m ²
		277m ²



Junaid Baba
 071 350 1516
junaid@greeff.co.za



Michael Maingard
 082 497 7888
michael@greeff.co.za

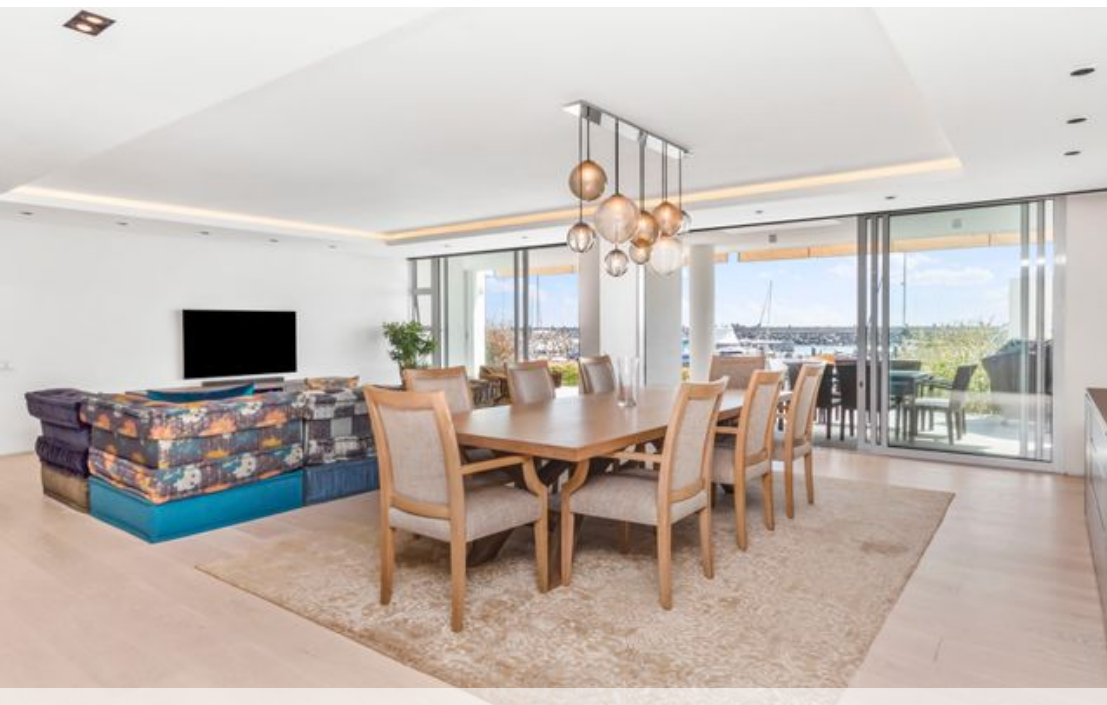
Head Office
 262 Main Road, Kenilworth, Cape Town
 (021) 7634120 | communications@greeff.co.za

GREEFF

CHRISTIE'S
 INTERNATIONAL REAL ESTATE

Where it counts

Exclusive Affiliates of Christie's International Real Estate. E & OE



● Cape Town, Mouille Point

GREEFF

CHRISTIE'S
INTERNATIONAL REAL ESTATE



Web Ref RL23285
<https://www.greeff.co.za>