



● Cape Town, **Ottery**

GREEFF

CHRISTIE'S
INTERNATIONAL REAL ESTATE



R950,000



Groundfloor urban living

EXCLUSIVE MANDATE Discover your new home in the heart of Ottery, where comfort meets convenience in this delightful two-bedroom apartment. Perfectly situated on the ground floor, this modern residence is designed for those seeking a blend of style and functionality. Step inside to find a welcoming open-plan kitchen that seamlessly flows into the living area, creating an inviting space ideal for both relaxation and entertaining. The kitchen is equipped with an extractor fan, ensuring a fresh atmosphere while you whip up your favorite meals. Tiled floors throughout provide a sleek and easy-to-maintain surface, adding a touch of elegance to the space. Main bedroom comes with built-in wardrobes whilst the second bedroom offers space for freestanding cupboards, offering...



Web Ref RL24293
<https://www.greeff.co.za>

Features

Interior	Exterior	Sizes	
Bedrooms 2	Carports/Parkings 1	Floor Size	52m ²
Bathrooms 1	Pool No		
Recep. Rooms 1			



Jay-Jay Beya
 061 380 4331
jayjay@greeff.co.za



Jordan Beya
 078 346 2995
jordan@greeff.co.za

Head Office
 262 Main Road, Kenilworth, Cape Town
 (021) 7634120 | communications@greeff.co.za

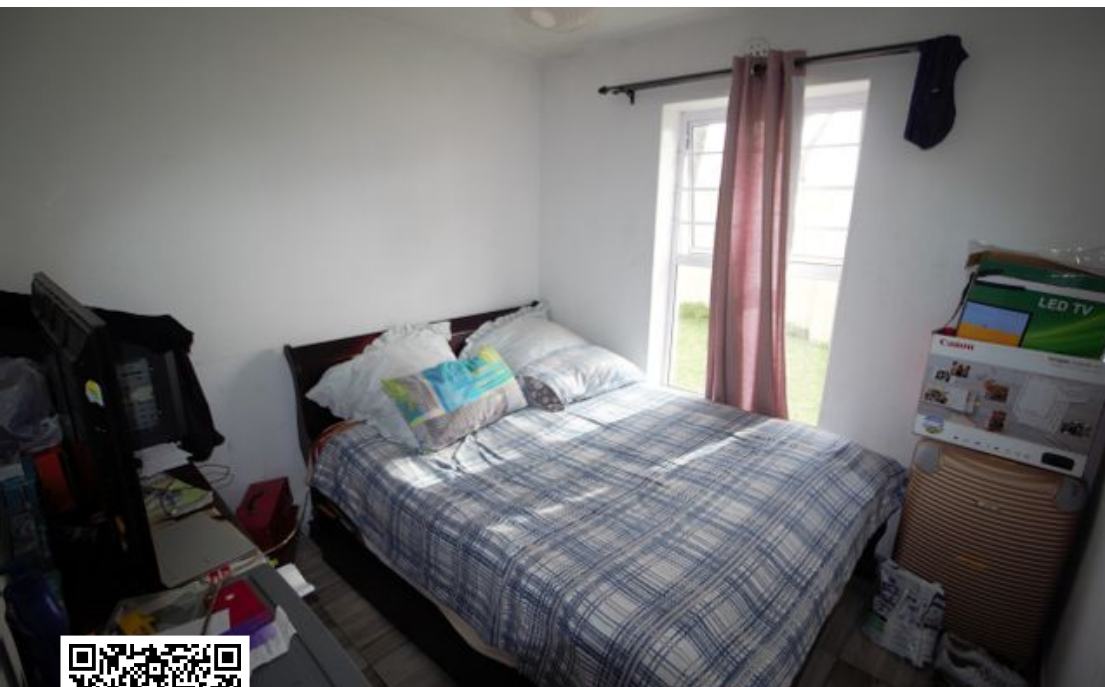
GREEFF

CHRISTIE'S
 INTERNATIONAL REAL ESTATE

Where it counts

Exclusive Affiliates of Christie's International Real Estate. E & OE





Web Ref RL24293
<https://www.greeff.co.za>