



● Cape Town, **Pinelands**

GREEFF



CHRISTIE'S
INTERNATIONAL REAL ESTATE



R1,075,000



GROUND FLOOR APARTMENT IN SOUGHT-AFTER ANFIELD VILLAGE

Calling all investors for this property, tenanted until end of August 2025. Anfield Village offers incredible value and is ideally positioned in Pinelands, often referred to as the "ten-minute suburb." The open-plan living, dining and kitchen area opens to the outdoors via a wide, glass-and-aluminium sliding door that allows natural light to flood the space. The modern kitchen features built-in cabinetry with a serving peninsula, an electric hob and an undercounter oven, a subway tile backsplash, and plumbing for an appliance. Both bedrooms are carpeted, feature built-in cupboards and are serviced by a family bathroom that includes a bathtub with a shower overhead, a basin and a toilet. Additional features include stylish tiled floors, a prepaid



Web Ref RL19630
<https://www.greeff.co.za>

Features

Interior	Exterior	Sizes
Bedrooms 2	Carports/Parkings 1	Floor Size 56m ²
Bathrooms 1	Pool No	
Recep. Rooms 1		



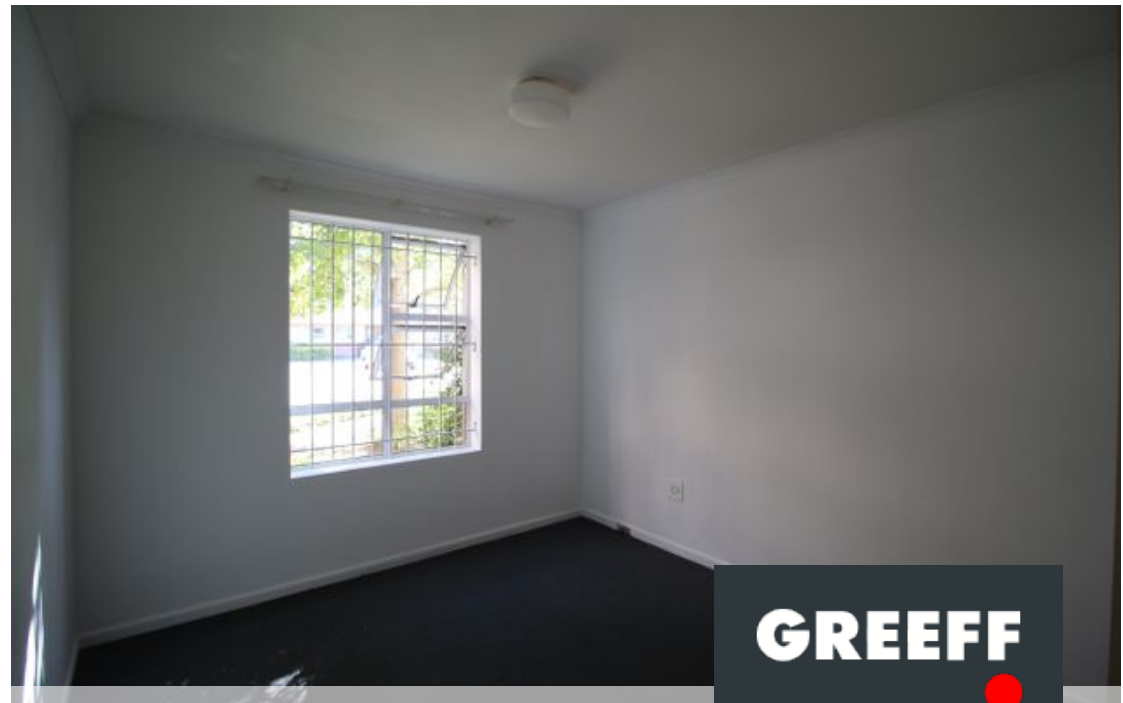
Ameer Allie
 0828644185
 ameer@greeff.co.za

Head Office
 262 Main Road, Kenilworth, Cape Town
 (021) 7634120 | communications@greeff.co.za



Where it counts

Exclusive Affiliates of Christie's International Real Estate. E & OE



● Cape Town, Pinelands

GREEFF

CHRISTIE'S
INTERNATIONAL REAL ESTATE



Web Ref RL19630
<https://www.greeff.co.za>