



● Cape Town, **Pinelands**

**GREEFF**



**CHRISTIE'S**  
INTERNATIONAL REAL ESTATE



**R1,095,000**



*SECURE APARTMENT IN COVETED COMPLEX IN PINELANDS*

New Exclusive listing Nestled within the secure and highly-regarded Howard Hamlet, this ground-floor apartment boasts one bedroom with an en suite, making it a compelling opportunity for the discerning investor. This move-in-ready apartment presents an open-plan layout encompassing the lounge and kitchen area, with direct access to a communal front garden - a perfect spot for morning relaxation and sunlit afternoons. Situated at the tranquil end of a cul-de-sac, the apartment offers a serene living experience with features like a modern kitchen, aluminium windows and built-in cupboards. Howard Hamlet offers several additional benefits, including communal gardens, play areas for children, swimming pools, and exclusive parking bays. These

... it an...



Web Ref RL20819  
<https://www.greeff.co.za>

**Features**

Interior	Exterior	Sizes
Bedrooms 1	Carports/Parkings 1	Floor Size 39m <sup>2</sup>
Bathrooms 1	Pool Yes	
Recep. Rooms 1		



Ameer Allie  
 0828644185  
 ameer@greeff.co.za

Head Office  
 262 Main Road, Kenilworth, Cape Town  
 (021) 7634120 | [communications@greeff.co.za](mailto:communications@greeff.co.za)



*Where it counts*

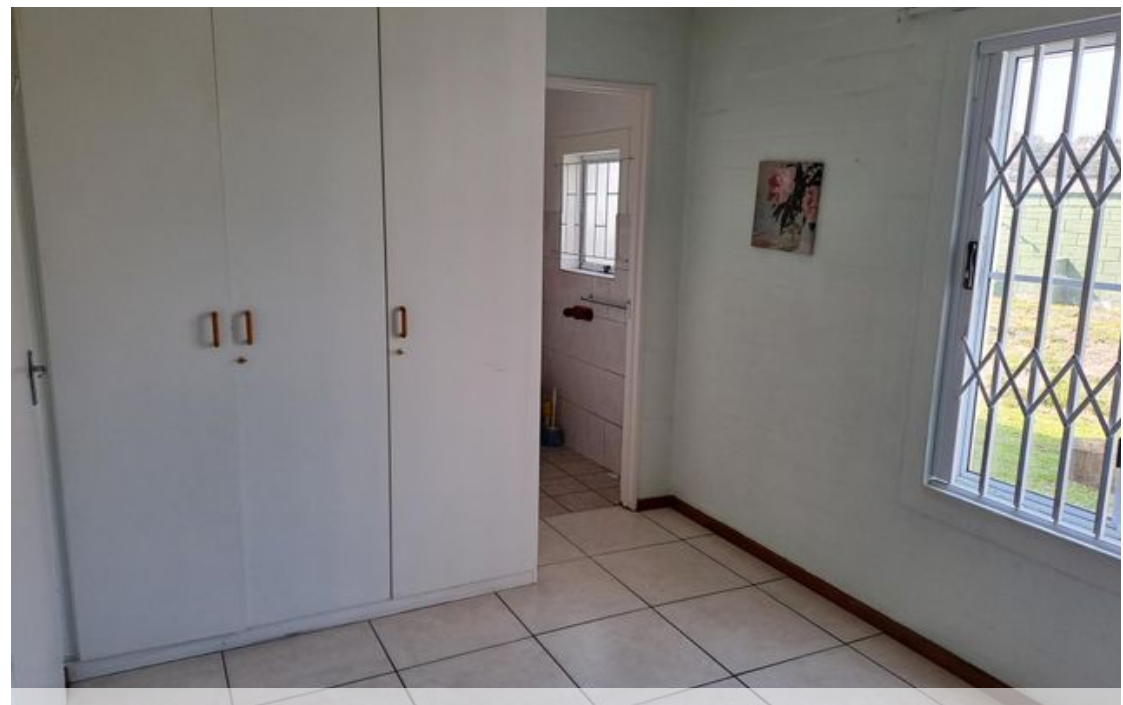
Exclusive Affiliates of Christie's International Real Estate. E & OE



● Cape Town, Pinelands

**GREEFF**

CHRISTIE'S  
INTERNATIONAL REAL ESTATE



Web Ref RL20819  
<https://www.greeff.co.za>