



● Cape Town, **Pinelands**

GREEFF

CHRISTIE'S
INTERNATIONAL REAL ESTATE



R3,250,000



LOCK-UP-AND-GO LIVING IN FAMILY FRIENDLY PINELANDS

SOLE EXCLUSIVE MANDATE This immaculate three-bedroomed house, nestled in the tranquil Orchards of Pinelands, presents the ideal lock-up-and-go lifestyle within a secure complex. Upon entry, a modern kitchen and spacious entertainment area welcome you with their sleek design and functionality. Step through French doors to discover a serene, private back garden adorned with verdant foliage, perfect for relaxation. An outdoor awning provides shade, while the paved patio sets the scene for memorable gatherings. Inside, three ample bedrooms, one currently utilised as a dining space, cater to family and guests. Two contemporary bathrooms, one en suite, contribute to the allure of this elegant home. Convenience is key, with a single garage featuring



Web Ref RL22152
<https://www.greeff.co.za>

Features

Interior	Exterior	Sizes			
Bedrooms	3	Carparks/Parkings	2	Floor Size	87m ²
Bathrooms	2	Pool	No	Land Size	209m ²
Recep. Rooms	1				



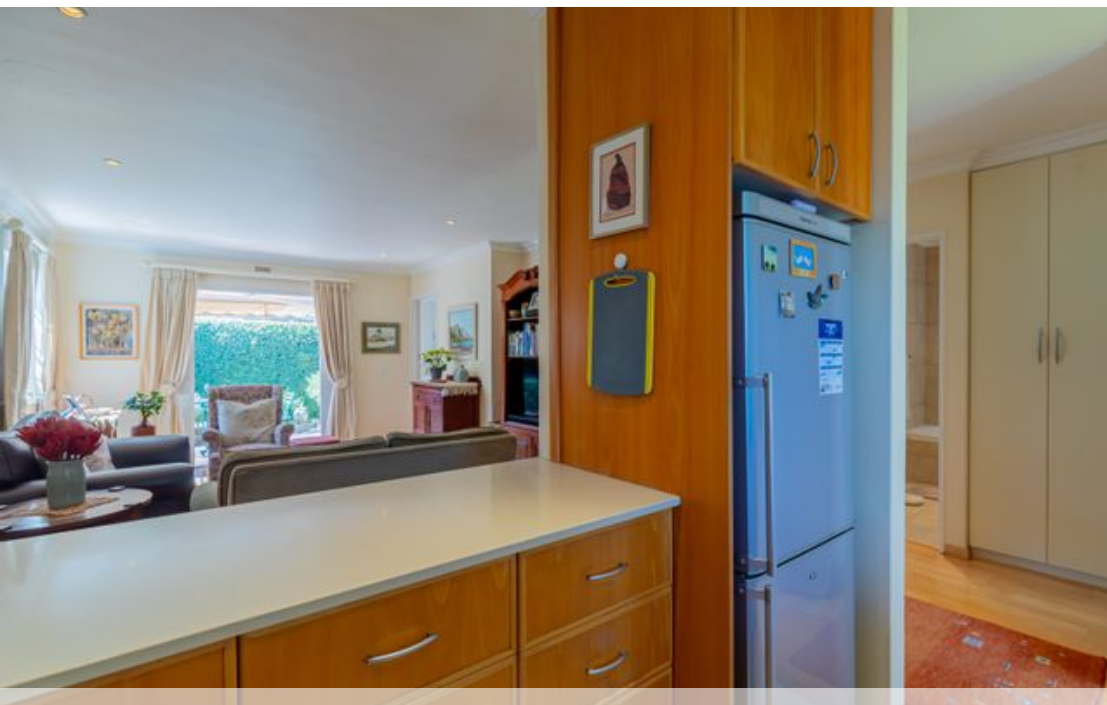
Ameer Allie
 0828644185
 ameer@greeff.co.za

Head Office
 262 Main Road, Kenilworth, Cape Town
 (021) 7634120 | communications@greeff.co.za



Where it counts

Exclusive Affiliates of Christie's International Real Estate. E & OE



● Cape Town, Pinelands

GREEFF

CHRISTIE'S
INTERNATIONAL REAL ESTATE



Web Ref RL22152
<https://www.greeff.co.za>