



● Cape Town, **Pinelands**

GREEFF

CHRISTIE'S
INTERNATIONAL REAL ESTATE



R2,850,000



MODERN COMFORT IN THE HEART OF PINELANDS

This sought-after property presents an ideal opportunity for buyers of all ages, boasting a modern design and move-in-ready convenience. Upon entry, you'll be greeted by a spacious tiled lounge seamlessly connected to an open-plan kitchen. The kitchen itself is not only modern but also strategically located for easy entertainment purposes. Adding to the practicality of the home, a covered laundry area adjacent to the garage complements the kitchen. Additionally, stepping out through the sliding doors from the lounge, you'll find a shaded patio, perfect for outdoor relaxation and gatherings. The property features two carpeted bedrooms, one generously sized and the other of average dimensions, catering perfectly to newlyweds, small families, or those seeking to...



Web Ref RL22281
<https://www.greeff.co.za>

Features

Interior	Exterior	Sizes
Bedrooms	2	Floor Size
Bathrooms	1	Land Size
Recep. Rooms	2	
Dining Rooms	1	
	Carparks/Parkings	2
	Pool	Yes
		Floor Size
		Land Size
		95m ²
		425m ²



Ameer Allie
 0828644185
 ameer@greeff.co.za

Head Office
 262 Main Road, Kenilworth, Cape Town
 (021) 7634120 | communications@greeff.co.za



Where it counts

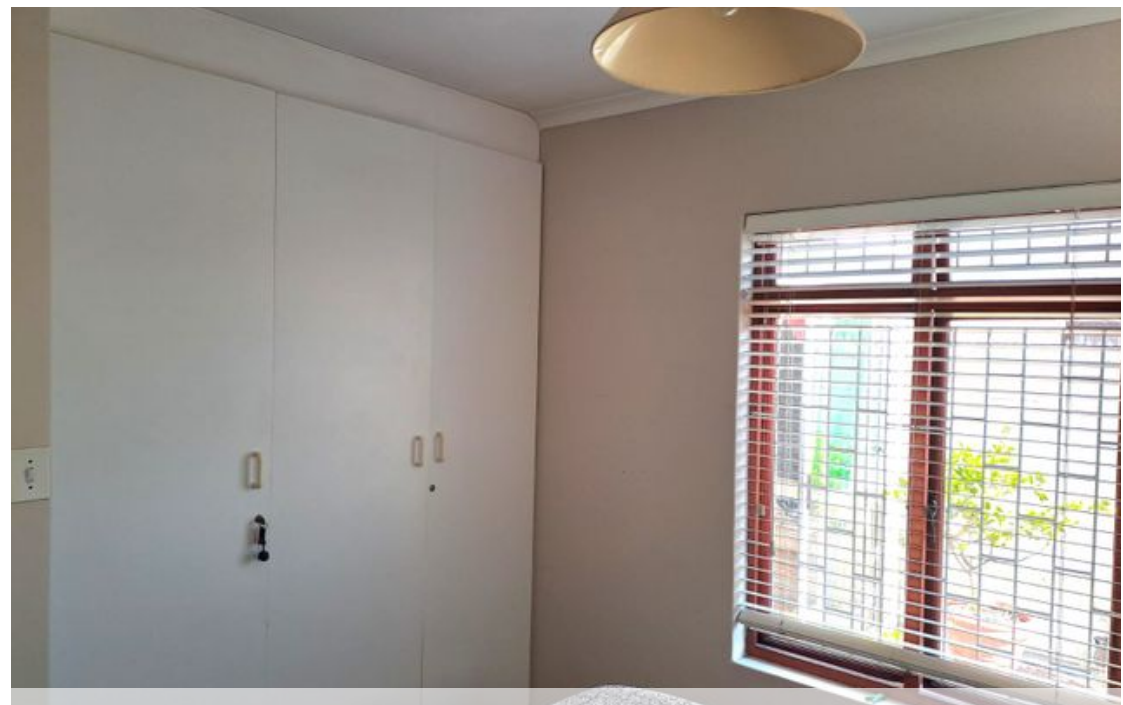
Exclusive Affiliates of Christie's International Real Estate. E & OE



● Cape Town, Pinelands

GREEFF

CHRISTIE'S
INTERNATIONAL REAL ESTATE



Web Ref RL22281
<https://www.greeff.co.za>