



● Cape Town, **Retreat**

GREEFF

CHRISTIE'S
INTERNATIONAL REAL ESTATE



R1,595,000



Character and charm filled residence

Beguiling and picturesque home situated in a family-orientated suburb is the perfect starter property for you. This home is an affordable way to enter into the market and awaits your personal touch. This property is spacious, includes a garage and provides parking for up to three cars. Sun-kissed and quaint, this living room is the ideal setting for unwinding with the family. Tiled and well-sized, this kitchen is modest. This kitchen features ample built-in cabinetry and countertop space for quick meal preparation. This kitchen includes a double sink and space for a freestanding stove. Three bedrooms are generously sized and each room benefits from built-in floor-to-ceiling cupboards. Servicing these bedrooms is one family bathroom. One full bathroom is finished...



Web Ref RL22271
<https://www.greeff.co.za>

Features

Interior	Exterior	Sizes			
Bedrooms	3	Carports/Parkings	4	Floor Size	78m ²
Bathrooms	1	Pool	No	Land Size	330m ²
Recep. Rooms	1				



Keenan Louw
 067 661 7157
keenan@greeff.co.za



Jordan Beya
 078 346 2995
jordan@greeff.co.za

Head Office
 262 Main Road, Kenilworth, Cape Town
 (021) 7634120 | communications@greeff.co.za



Where it counts

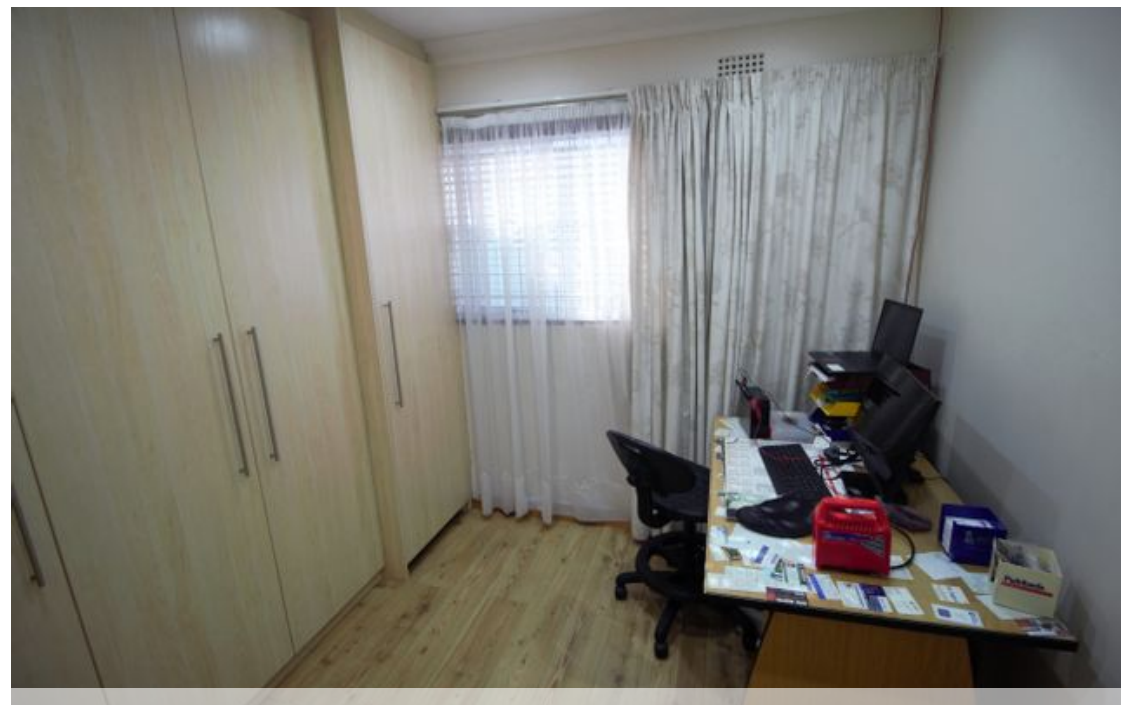
Exclusive Affiliates of Christie's International Real Estate. E & OE



● Cape Town, Retreat

GREEFF

CHRISTIE'S
INTERNATIONAL REAL ESTATE



Web Ref RL22271
<https://www.greeff.co.za>