



● Cape Town, Rondebosch

GREEFF



CHRISTIE'S
INTERNATIONAL REAL ESTATE



R15,000,000

 3
  3.5
  4

Brand New - No Transfer Duty

Built to the highest standard this home offers solar and superb fixtures and fittings. Well-positioned, a stone's throw from SACS and Westerford. Plenty of kerb appeal and full of double volume spaces and expansive living areas.

Features

Interior	Exterior	Sizes	
Bedrooms	3	Carports/Parkings	4
Bathrooms	3.5	Pool	No
Recep. Rooms	2	Floor Size	400m ²
Dining Rooms	1	Land Size	371m ²



Donna Norgarb
 071 602 7518
 donna@greeff.co.za

Head Office
 262 Main Road, Kenilworth, Cape Town
 (021) 7634120 | communications@greeff.co.za



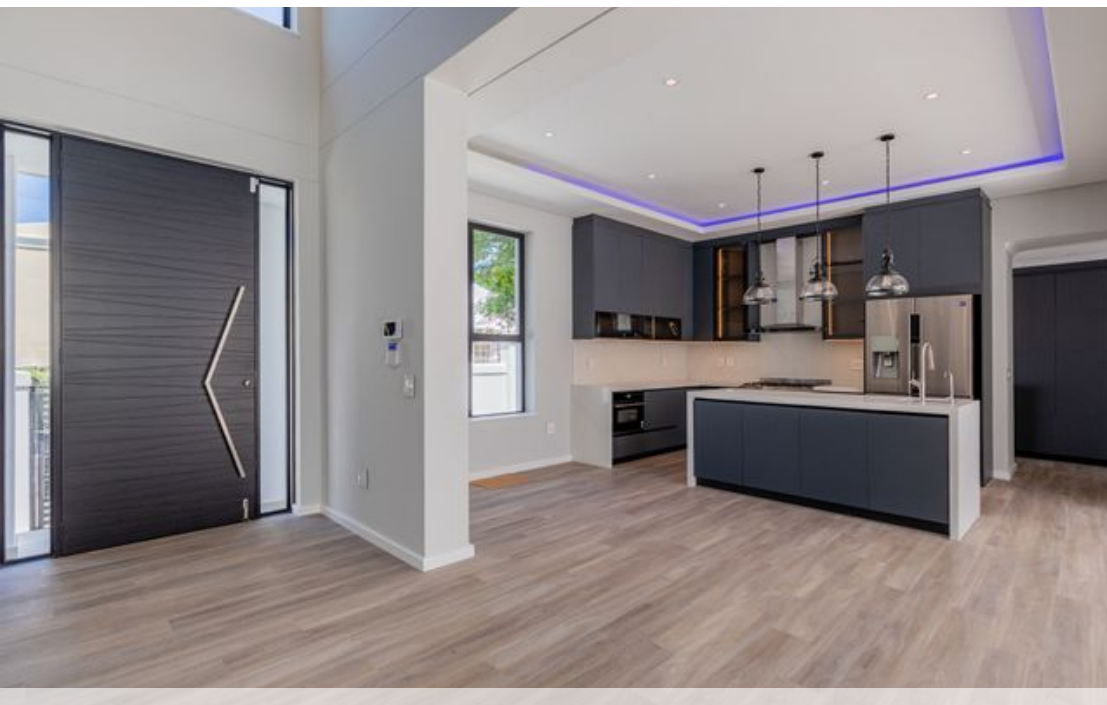
Web Ref RL23535
<https://www.greeff.co.za>

GREEFF

CHRISTIE'S
INTERNATIONAL REAL ESTATE

Where it counts

Exclusive Affiliates of Christie's International Real Estate. E & OE

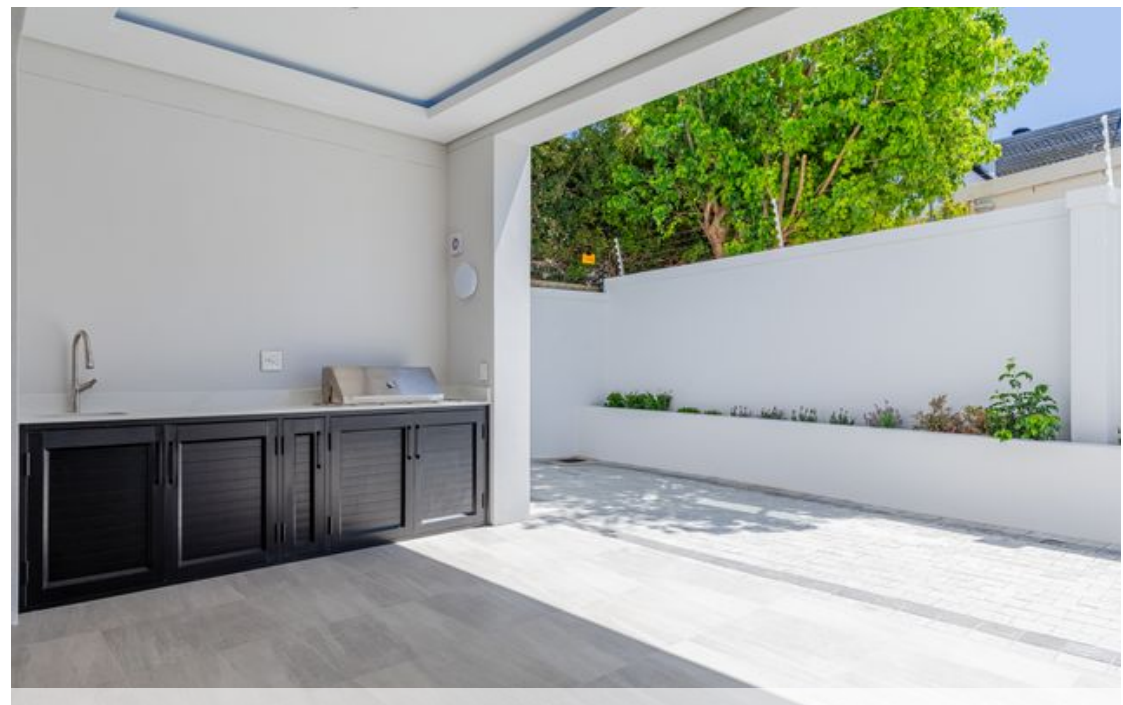
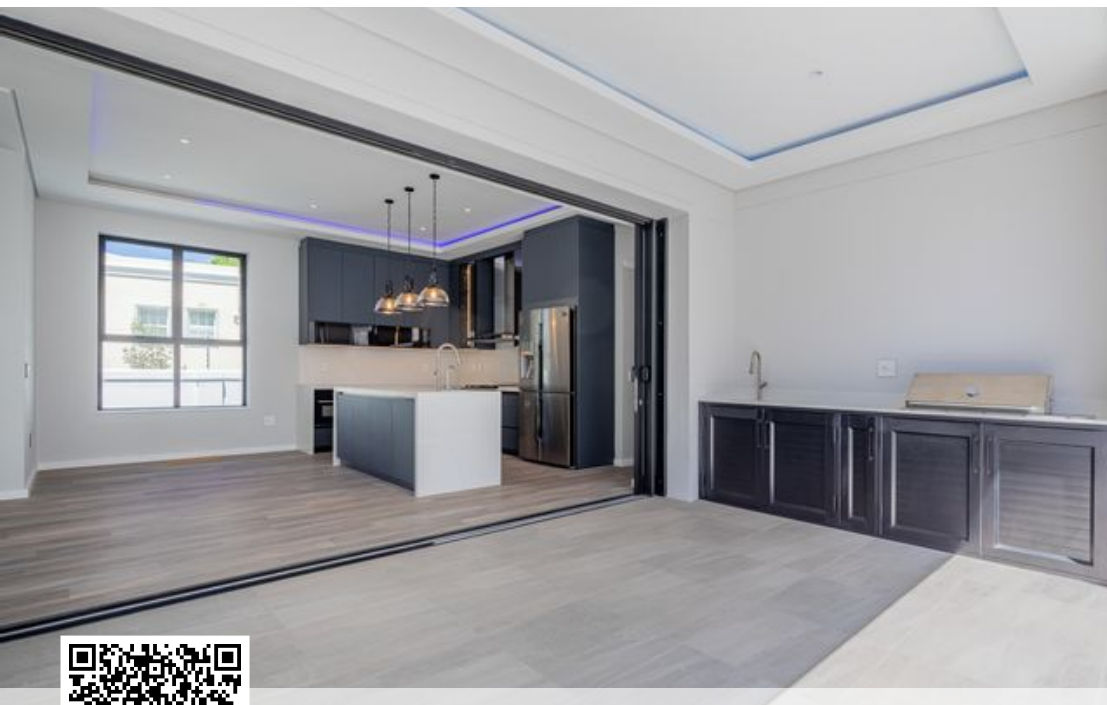


● Cape Town, Rondebosch

GREEFF



CHRISTIE'S
INTERNATIONAL REAL ESTATE



Web Ref RL23535
<https://www.greeff.co.za>