



● Cape Town, Sea Point

**GREEFF**



**CHRISTIE'S**  
INTERNATIONAL REAL ESTATE





**R2,095,000**



*Modern Investment with a 15% Net ROI*

Welcome to ONE26 On M, a brand-new BLOK development completed in January 2024. This sleek and contemporary apartment offers an incredible investment opportunity with a 15% net return on investment a rare find in the Cape Town property market also being sold furnished! Located in the heart of a vibrant neighbourhood, this stylish unit features industrial-chic design, with tiled floors, exposed concrete ceilings, and floor-to-ceiling windows that showcase breathtaking views of Lion's Head, Table Mountain, and Signal Hill. The apartment also comes equipped with air conditioning, adding extra comfort and value. Residents of ONE26 On M enjoy world class amenities, including a rooftop swimming pool and 24-hour security with a concierge services. The building is...



Web Ref RL24325  
<https://www.greeff.co.za>

**Features**

Interior	Exterior	Sizes
Bedrooms 1	Carports/Parkings 0	Floor Size 20m <sup>2</sup>
Bathrooms 1	Pool Yes	Land Size 20m <sup>2</sup>
Recep. Rooms 1		



Junaid Baba  
 071 350 1516  
[junaid@greeff.co.za](mailto:junaid@greeff.co.za)



Michael Maingard  
 082 497 7888  
[michael@greeff.co.za](mailto:michael@greeff.co.za)

Head Office  
 262 Main Road, Kenilworth, Cape Town  
 (021) 7634120 | [communications@greeff.co.za](mailto:communications@greeff.co.za)



*Where it counts*

Exclusive Affiliates of Christie's International Real Estate. E & OE



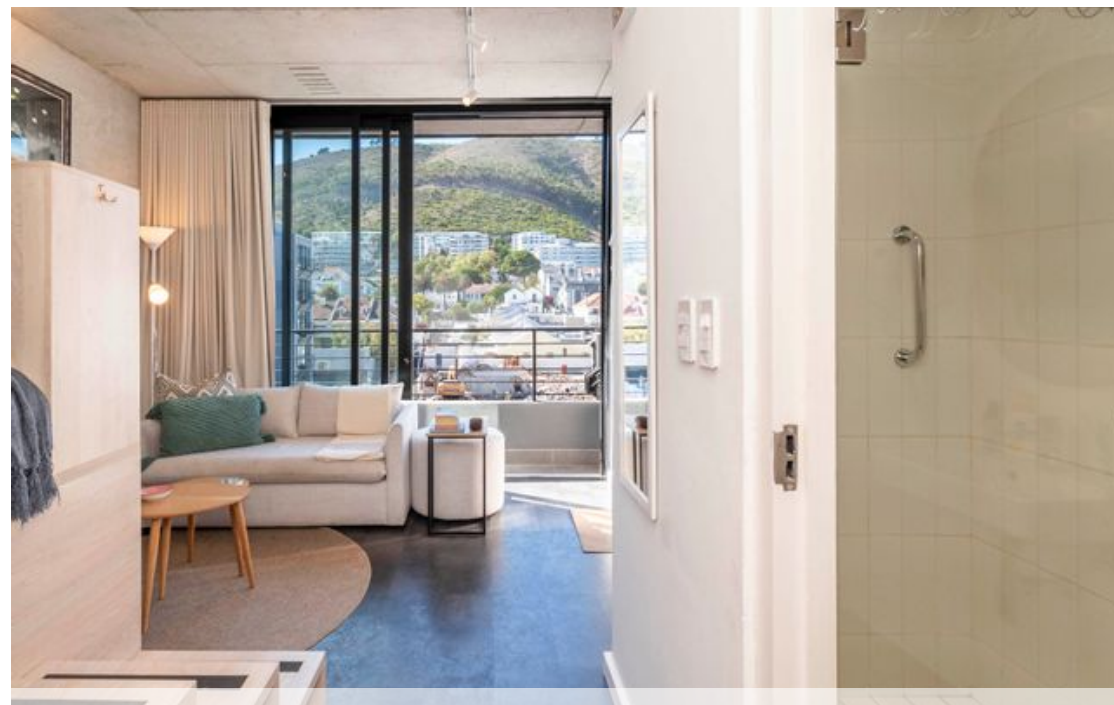


● Cape Town, Sea Point

**GREEFF**

**CHRISTIE'S**  
INTERNATIONAL REAL ESTATE





Web Ref RL24325  
<https://www.greeff.co.za>