



● Cape Town, **Surrey Estate**

GREEFF



CHRISTIE'S
INTERNATIONAL REAL ESTATE



R2,695,000

 4
  3.5
  3

Step Into Your New Chapter of Comfort and Style

This delightful three-bedroom, two-and-a-half-bathroom property in Surrey Estate, Cape Town, offers the perfect blend of comfort and functionality for modern family living. Set in a well-established neighbourhood with a friendly atmosphere, this home is ideal for those seeking both space and convenience. The stylish kitchen, featuring granite worktops and ample cupboard space, is perfect for family meals, while the cosy lounge provides a welcoming space to relax. A separate laundry room and scullery add to the home's practicality. With aluminium windows throughout, the property is filled with natural light, and an automated three-car garage offers plenty of parking. The home is secured by electric fencing around the entire perimeter. An additional one-bedroom,...



Web Ref RL23217
<https://www.greeff.co.za>

Features

Interior	Exterior	Sizes	
Bedrooms	4	Carports/Parkings	3
Bathrooms	3.5	Pool	No
Recep. Rooms	2		
Dining Rooms	1		
		Land Size	481m ²



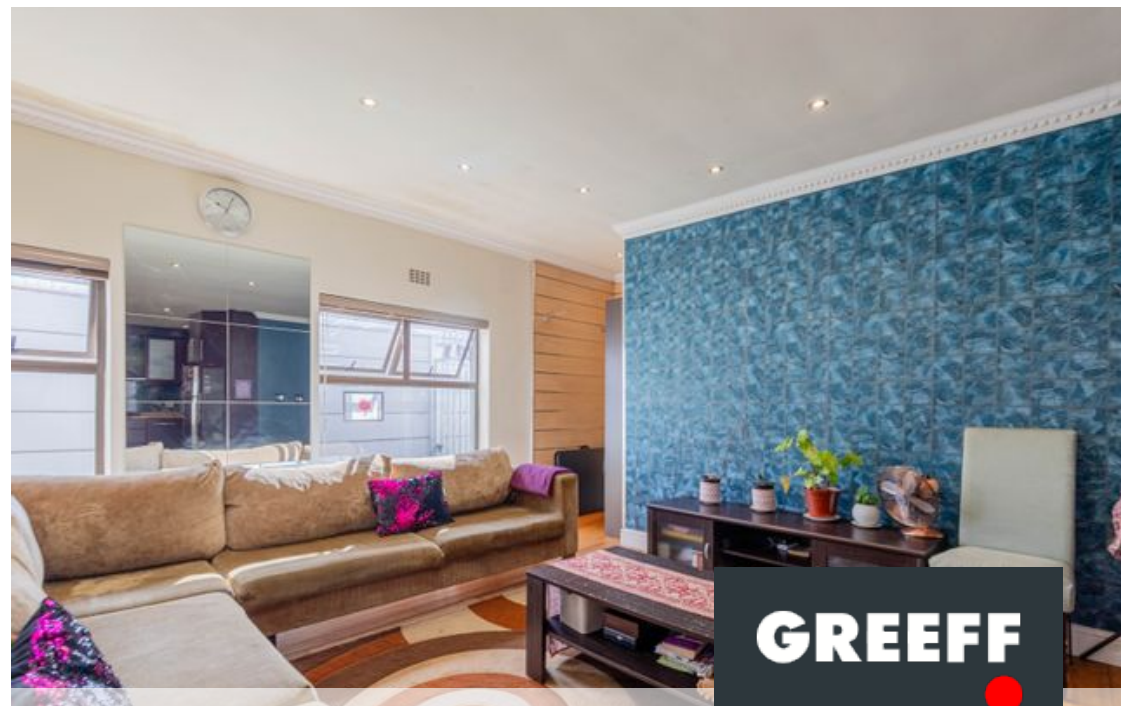
Shahieda Bardien
 084 512 4845
shahieda@greeff.co.za

Head Office
 262 Main Road, Kenilworth, Cape Town
 (021) 7634120 | communications@greeff.co.za



Where it counts

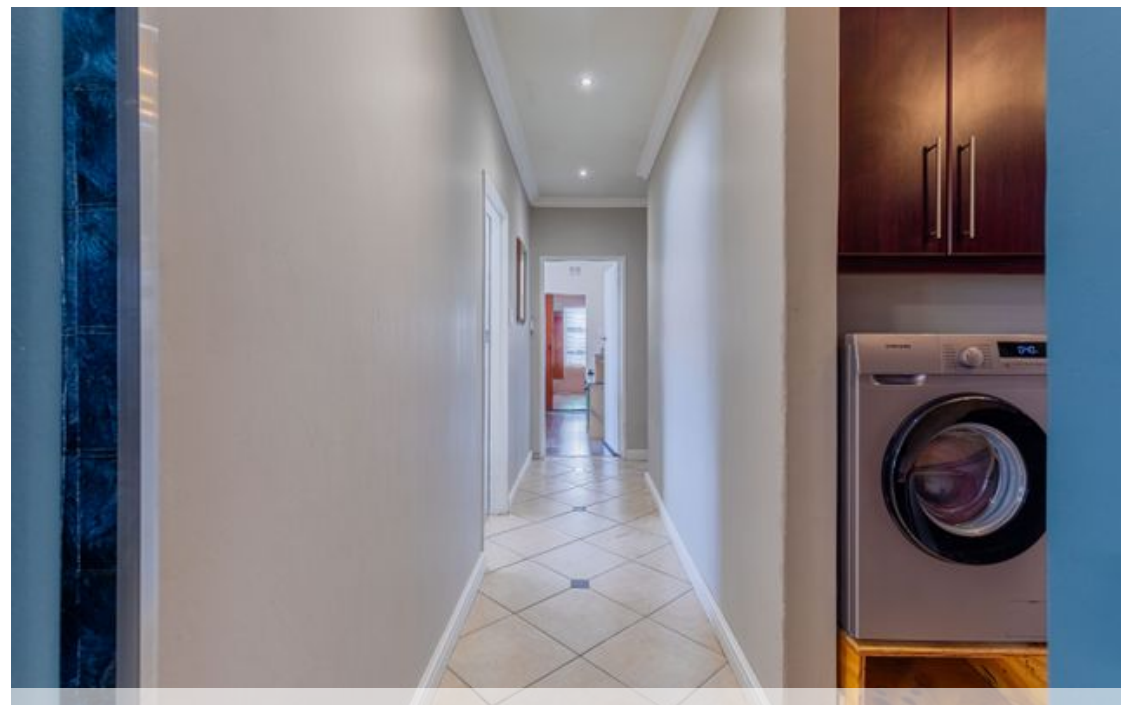
Exclusive Affiliates of Christie's International Real Estate. E & OE



● Cape Town, Surrey Estate

GREEFF

CHRISTIE'S
INTERNATIONAL REAL ESTATE



Web Ref RL23217
<https://www.greeff.co.za>