



● Cape Town, **Walmer Estate**

**GREEFF**

**CHRISTIE'S**  
INTERNATIONAL REAL ESTATE



**R5,499,000**

 5
  4
  2

*SPACIOUS AND BRIGHT WITH PICTURESQUE VIEWS AND EXCELLENT AMENITIES IN WALMER ESTATE*

ONSHOW: View by appointment. This beautiful home, perfect for a large family, offers three levels of space and breathtaking views across the harbour to Signal Hill. Inside, there are two reception rooms, ideal for entertaining and relaxation. Both lead out to a wide balcony overlooking the neighbourhood, ocean and surrounding mountains. There are four en suite bedrooms, along with an additional fifth bedroom or study, and a guest toilet. The large kitchen, complete with a scullery and laundry room, includes two ovens; an island with an electric hob, two warming trays and an extractor fan; and a breakfast seating area that serves as a wonderful gathering spot for the family. A serving hatch to the dining room allows for ease and convenience



ing or...

Web Ref RL20510  
<https://www.greeff.co.za>

### Features

Interior	Exterior	Sizes			
Bedrooms	5	Carports/Parkings	2	Floor Size	375m <sup>2</sup>
Bathrooms	4	Pool	No	Land Size	463m <sup>2</sup>
Recep. Rooms	3				
Dining Rooms	1				



Shameela Bhagoo  
 072 982 8446  
[shameela@greeff.co.za](mailto:shameela@greeff.co.za)

Head Office  
 262 Main Road, Kenilworth, Cape Town  
 (021) 7634120 | [communications@greeff.co.za](mailto:communications@greeff.co.za)



*Where it counts*

Exclusive Affiliates of Christie's International Real Estate. E & OE



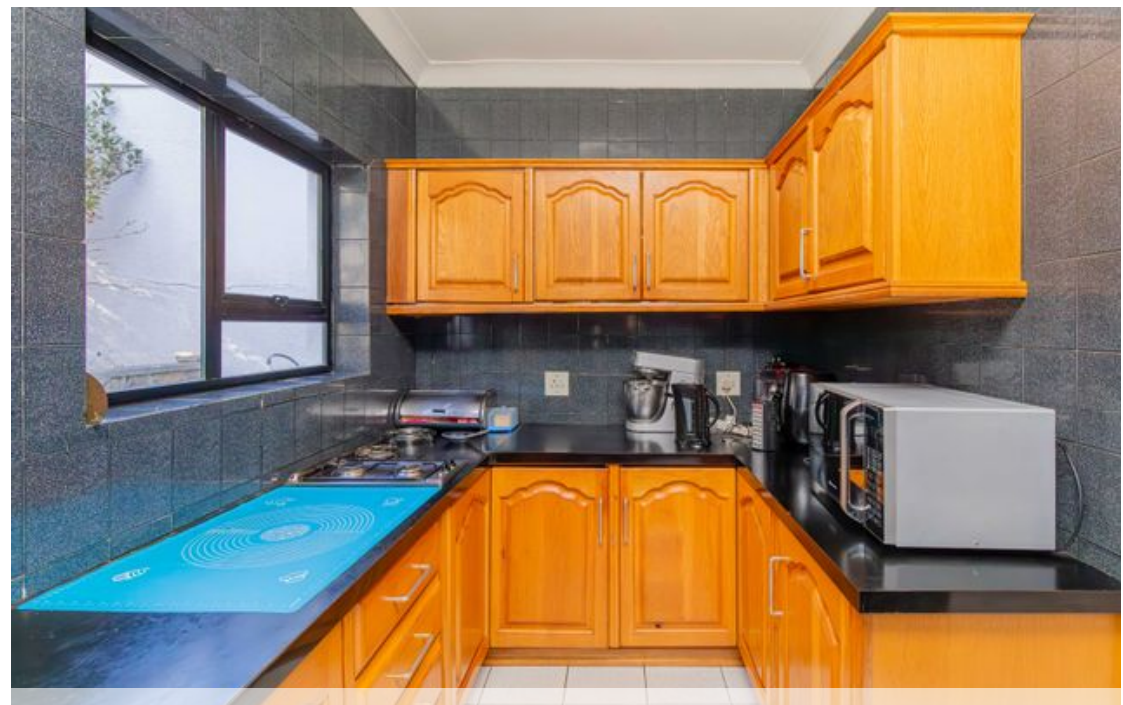


● Cape Town, Walmer Estate

**GREEFF**

**CHRISTIE'S**  
INTERNATIONAL REAL ESTATE





Web Ref RL20510  
<https://www.greeff.co.za>