



● Cape Town, Zwaanswyk

**GREEFF**



**CHRISTIE'S**  
INTERNATIONAL REAL ESTATE





**R8,950,000**



## *Escape from Suburbia*

Positioned high on the mountain side up Zwaanswyk Road, with uninterrupted views of Elephant's Eye Cave and the Silvermine mountain range, this sectional title property is ideal for anyone wanting to escape from the bustle of city life. With no houses between you and the mountain, nature is on your doorstep – it's a hard-to-beat spot for an evening braai. The open plan kitchen area has double-volume ceilings, exposed beams and a cosy closed-combustion fireplace. With large windows in all the rooms, sunlight pours in and warms the home throughout the year. The house is predominantly a two-bedroom/two-bathroom home with a pleasant study that could double as a third bedroom, if required. While you feel as if you're far away from civilization, top schools and a great...



Web Ref RL21307  
<https://www.greeff.co.za>

## Features

Interior	Exterior	Sizes	
Bedrooms	2	Carports/Parkings	2
Bathrooms	2	Pool	Yes
Recep. Rooms	1		
		Land Size	1,051m <sup>2</sup>



Tarry Unite-Penny  
 0832853762  
[tarry@greeff.co.za](mailto:tarry@greeff.co.za)



Douglas Holder  
 021 763 4120  
[douglas@greeff.co.za](mailto:douglas@greeff.co.za)

Head Office  
 262 Main Road, Kenilworth, Cape Town  
 (021) 7634120 | [communications@greeff.co.za](mailto:communications@greeff.co.za)

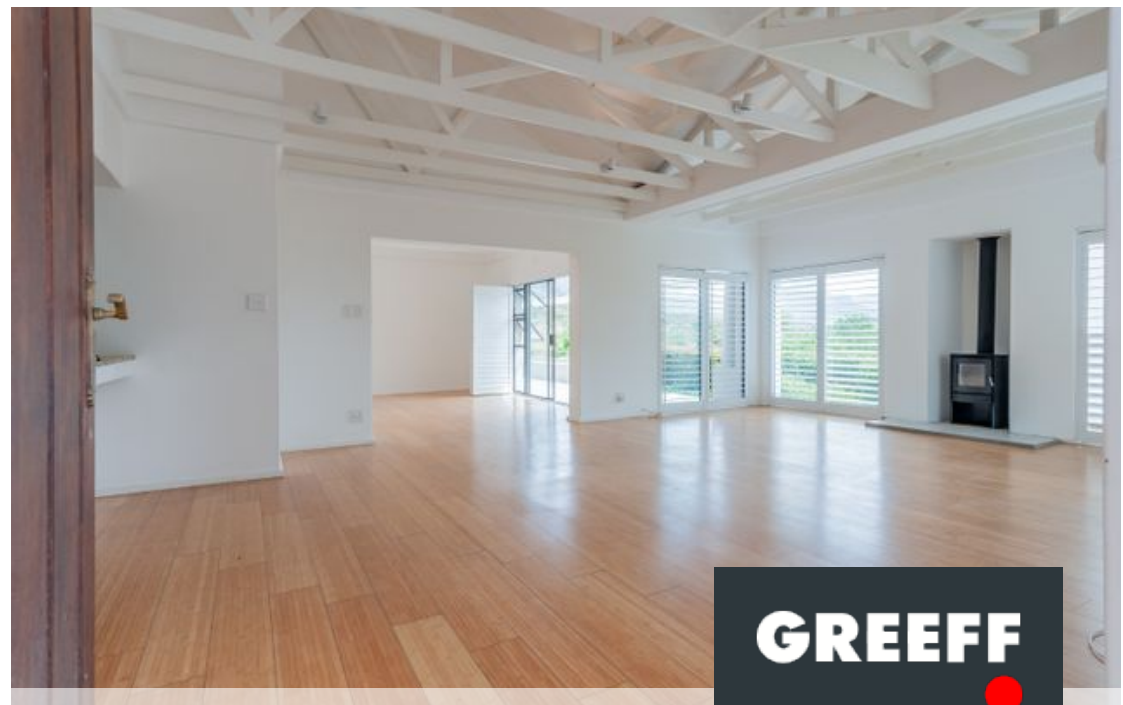
**GREEFF**

CHRISTIE'S  
 INTERNATIONAL REAL ESTATE

*Where it counts*

Exclusive Affiliates of Christie's International Real Estate. E & OE





● Cape Town, Zwaanswyk

**GREEFF**

**CHRISTIE'S**  
INTERNATIONAL REAL ESTATE





Web Ref RL21307  
<https://www.greeff.co.za>