



● Cape Town, Zwaanswyk

GREEFF

CHRISTIE'S
INTERNATIONAL REAL ESTATE



R20,990,000



Two substantial homes in Zwaanswyk

Positioned high on the mountain side up Zwaanswyk Road with uninterrupted views of Elephant's Eye Cave and the Silvermine mountain range, this 4 356m² property, with two significant houses on it, is ideal for those wanting to escape from the bustle of city life. With nothing between you and the mountain, nature is on your door step - the lush, established garden and expansive lawns meet the natural mountain vegetation of fynbos on the property boundary. The verandah, opening onto the garden, is wide and spacious providing an inviting area for relaxed outdoor living and entertaining. The open-plan living area in the main house, with double volume ceilings and exposed beams looks out through glass doors onto the picturesque garden and the mountain beyond. With a large...



Web Ref RL21772
<https://www.greeff.co.za>

Features

Interior	Exterior	
Bedrooms	4	Carports/Parkings 8
Bathrooms	4	Pool Yes
Recep. Rooms	4	
Dining Rooms	2	



Tarry Unite-Penny
0832853762
tarry@greeff.co.za



Douglas Holder
021 763 4120
douglas@greeff.co.za

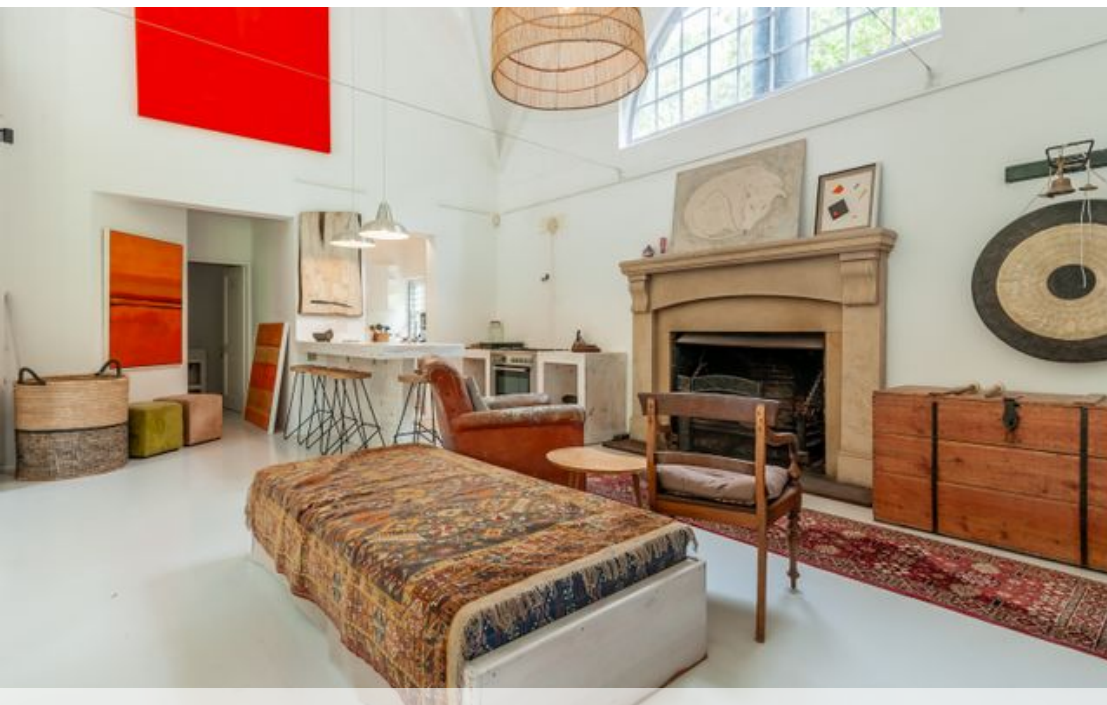
Head Office
262 Main Road, Kenilworth, Cape Town
(021) 7634120 | communications@greeff.co.za

GREEFF

CHRISTIE'S
INTERNATIONAL REAL ESTATE

Where it counts

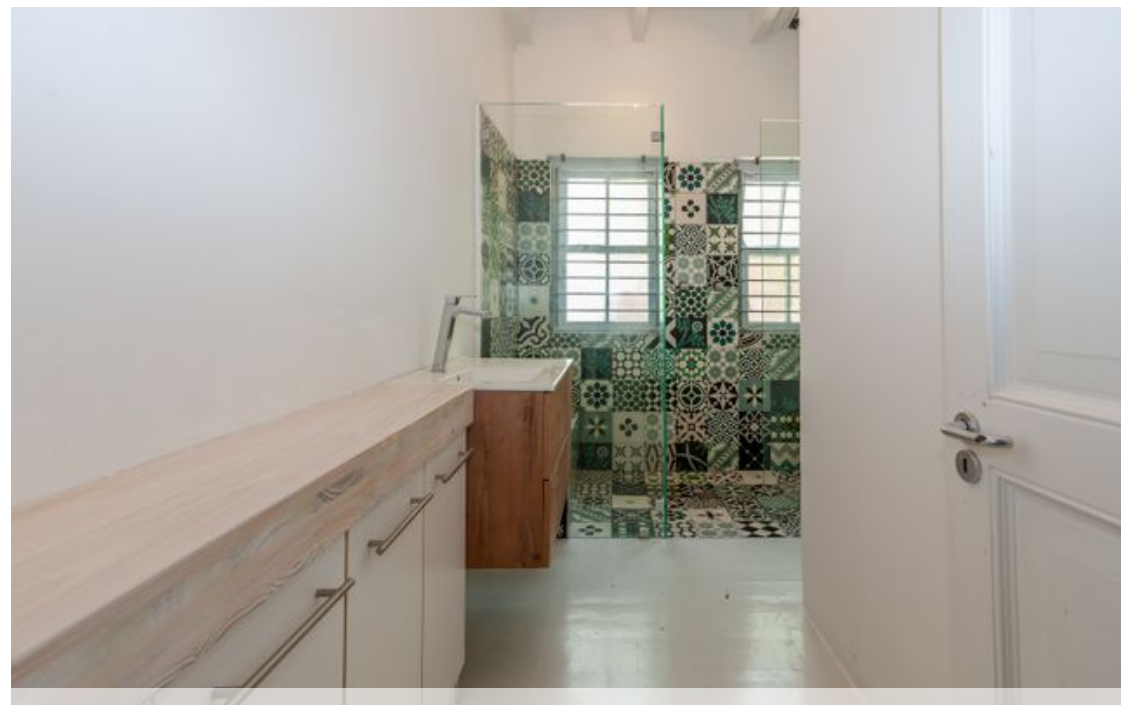
Exclusive Affiliates of Christie's International Real Estate. E & OE



● Cape Town, Zwaanswyk

GREEFF

CHRISTIE'S
INTERNATIONAL REAL ESTATE



Web Ref RL21772
<https://www.greeff.co.za>