



● Gansbaai, **Birkenhead**

**GREEFF**



**CHRISTIE'S**  
INTERNATIONAL REAL ESTATE



**R2,400,000**



*Very large stand at the ocean.*

Very rare opportunity to obtain a large plot within the fynbos, close to the ocean. We have the following plots available, make your choice.. This properties is in the Birkenhead area of Gansbaai, close to the Danger Point Lighthouse, and next to the Romansbaai Estate. Just across the road is the well known Afrikanos Restaurant where you can dive with the crocodiles. This properties is within walking distance from the ocean where there are walking space and good fishing spots. The properties are : 1. 25 Marine Drive, Erf 26 : 7,2579 ha – R5,35 mil 2. 29 Van Bloemenstein Road, Erf 24 : 4,7823 ha – R1,6 mil 3. 31 Van Bloemenstein Road, Erf 23 : 4,5704 ha – R1,6 mil



Web Ref RL21572  
<https://www.greeff.co.za>

### Features

Exterior	Sizes
Carports/Parkings	0
Pool	No
Land Size	45,704m <sup>2</sup>



Johan de Wet  
083 306 2484  
johandewet@greeff.co.za



Louisa De Wet  
084 498 2844  
louisa@greeff.co.za

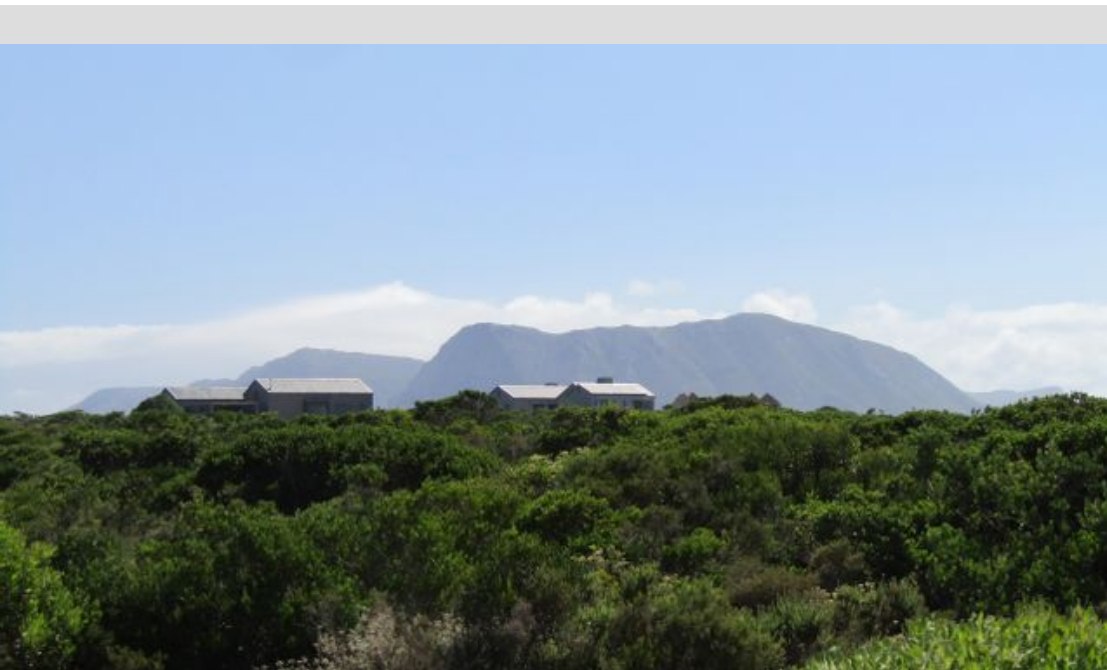
Whale Coast  
173 Main Road , Hermanus, Western Cape, 7200  
(028) 3122241 | whalecoast@greeff.co.za

**GREEFF**

CHRISTIE'S  
INTERNATIONAL REAL ESTATE

*Where it counts*

Exclusive Affiliates of Christie's International Real Estate. E & OE

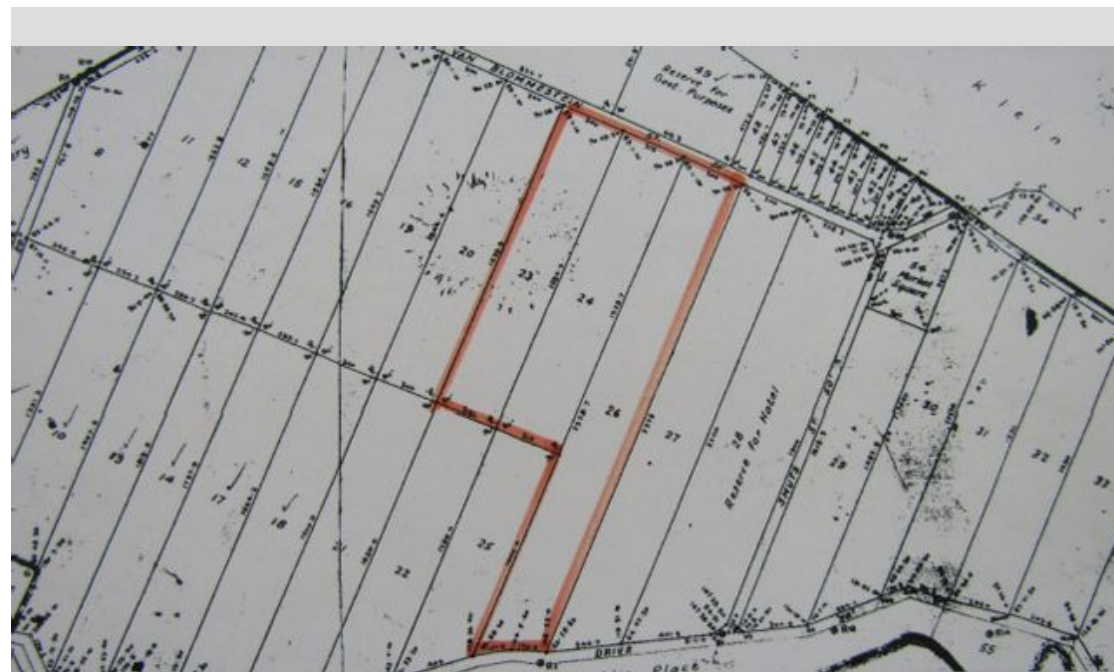


● Gansbaai, Birkenhead

**GREEFF**



**CHRISTIE'S**  
INTERNATIONAL REAL ESTATE



Web Ref RL21572  
<https://www.greeff.co.za>