



● Gansbaai, De Kelders

GREEFF

CHRISTIE'S
INTERNATIONAL REAL ESTATE



R2,250,000



North Facing Seafront Penthouse for Sale

EXCLUSIVE MANDATE Experience breathtaking, uninterrupted sea views from this stunning luxury penthouse. The penthouse offers ideal sunrise and sunset views throughout the day. Key Features: Spacious Balcony: Perfect for relaxing and enjoying the scenery. Modern Open-Plan Kitchen: Equipped with a gas stove, ideal for cooking enthusiasts. Living Area: Features sliding doors that open to a covered balcony, enhancing the indoor-outdoor flow. Bedrooms: 2 spacious bedrooms, main bedroom with sliding doors to the balcony and spectacular views. Bathrooms: 2 bathrooms, including an en-suite for the main Located in De Kelders, just 5 km north of Gansbaai and a 45-minute drive from Hermanus, this charming fishing village is renowned for its exceptional whale-watching...



Web Ref RL23517
<https://www.greeff.co.za>

Features

Interior	Exterior	Sizes
Bedrooms	2	Floor Size 87m ²
Bathrooms	2	
Recep. Rooms	2	
Dining Rooms	1	
	Carpots/Parkings	1
	Pool	No



Alecia De Villiers
 0833593643
alecia@greeff.co.za

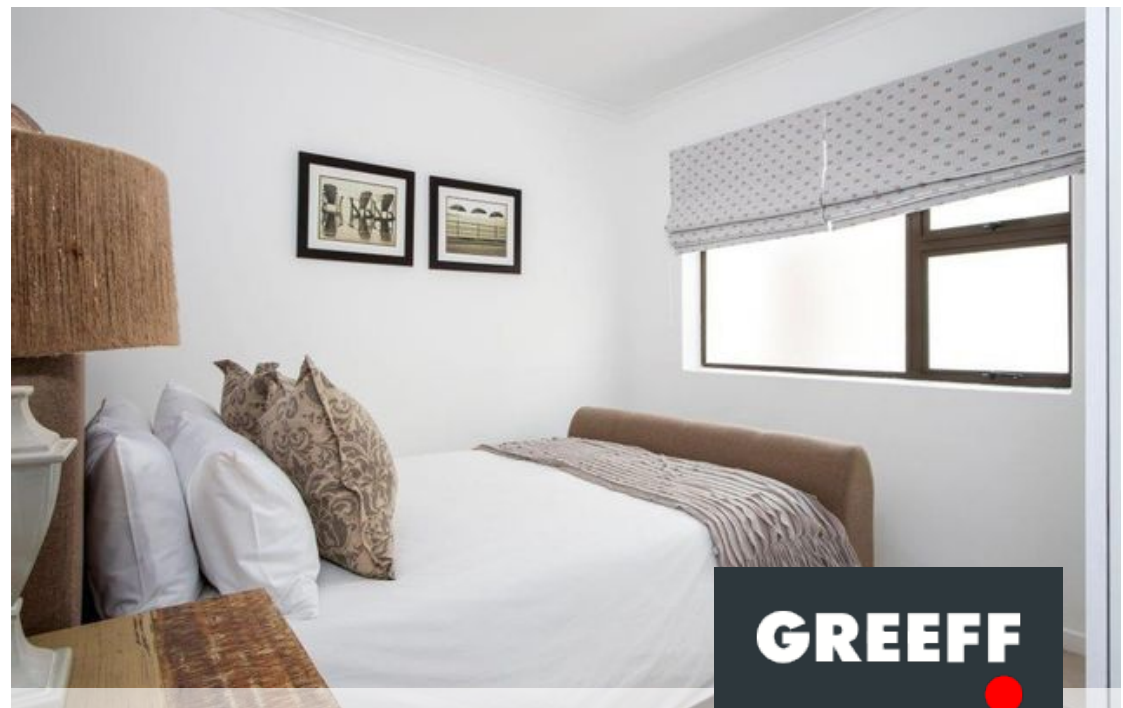
Whale Coast
 173 Main Road , Hermanus, Western Cape, 7200
 (028) 3122241 | whalecoast@greeff.co.za

GREEFF

CHRISTIE'S
 INTERNATIONAL REAL ESTATE

Where it counts

Exclusive Affiliates of Christie's International Real Estate. E & OE



● Gansbaai, De Kelders



Web Ref RL23517
<https://www.greeff.co.za>