



● Gansbaai, **Gansbaai Central**

GREEFF

CHRISTIE'S
INTERNATIONAL REAL ESTATE



R850,000



Spacious 2 bedroom apartment, offering modern living in a prime location.

Introducing an apartment in Baleana Bay, where safety, comfort and convenience come together in this delightful 2-bedroom apartment. Situated on the top floor, this apartment offers a spacious open plan lounge, dining and kitchen area with luxury granite finishes for you to enjoy. With 2 bedrooms and 2 bathrooms. This property has access to the roof of the building where you can relax and enjoy the views of the ocean and the mountains. Here you will enjoy a sense of community and privacy. Safety is a priority, with excellent security measures in place. Located near Gansbaai harbour, local shops and medical facilities. Don't miss out on the opportunity to make Baleana Bay your own place to retire or for a lock up and go for holiday. The apartment is



Web Ref RL23245
<https://www.greeff.co.za>

Features

Interior	Exterior	Sizes
Bedrooms 2	Carports/Parkings 2	Floor Size 124m ²
Bathrooms 1	Pool No	
Recep. Rooms 2		
Dining Rooms 1		



Johan de Wet
 083 306 2484
johandewet@greeff.co.za



Louisa De Wet
 084 498 2844
louisa@greeff.co.za

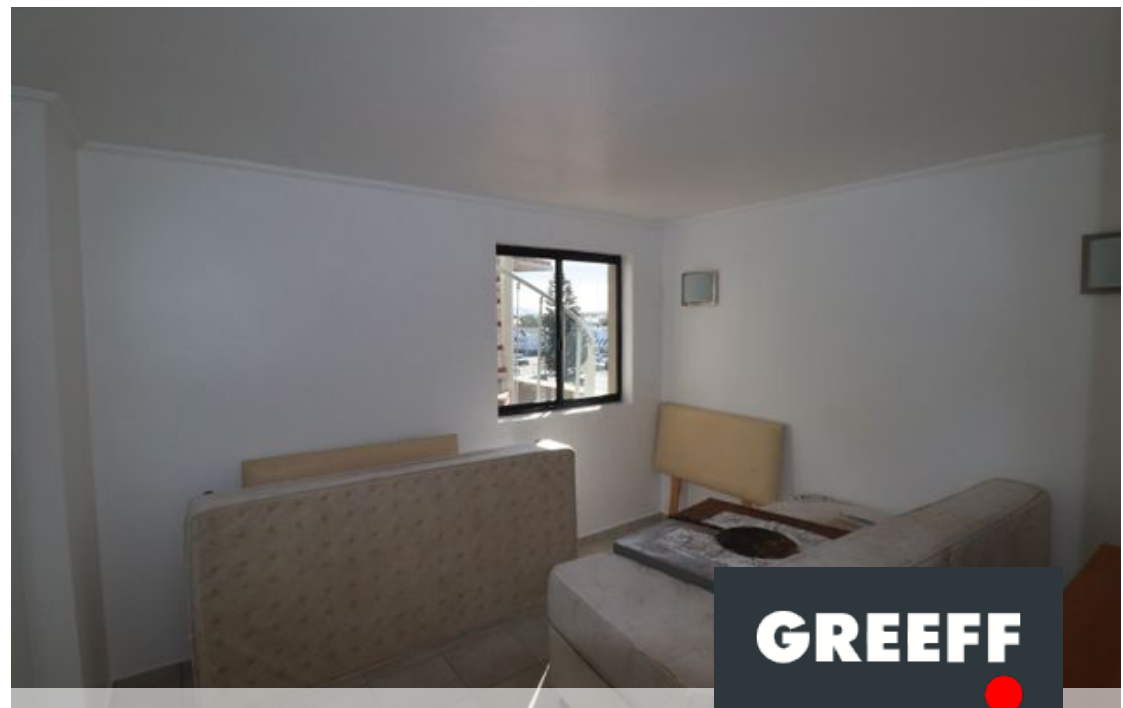
Whale Coast
 173 Main Road , Hermanus, Western Cape, 7200
 (028) 3122241 | whalecoast@greeff.co.za

GREEFF

CHRISTIE'S
 INTERNATIONAL REAL ESTATE

Where it counts

Exclusive Affiliates of Christie's International Real Estate. E & OE



● Gansbaai, **Gansbaai Central**

GREEFF

CHRISTIE'S
INTERNATIONAL REAL ESTATE



Web Ref RL23245
<https://www.greeff.co.za>