



● Gansbaai, Kleinbaai

**GREEFF**

CHRISTIE'S  
INTERNATIONAL REAL ESTATE



**R3,060,000**



*Beautiful new spacious house adjacent to green belt next to the golf course*

Only once in a live time you will find an opportunity like this, spacious and well priced. Imagine you moving into this "new" house, you have the opportunity to start a new life with your family. The rooms are spacious allowing double beds in all the rooms. The view from the rooms are on the green belt to the north of the house, inviting the sun into the rooms in the winter. An alarm system is already installed and with a well known security company. The build in braai is on a spacious stoop adjacent to the living room and two double sliding doors give access to the house. This entertaining area is on the northern side of the house and very well planned to enjoy the sunny afternoons in the winter and the shade of the summer. The house are fitted with a gas



Web Ref RL21566  
<https://www.greeff.co.za>

## Features

Interior	Exterior	Sizes	
Bedrooms	3	Carports/Parkings	4
Bathrooms	3	Pool	No
Recep. Rooms	3	Floor Size	242m <sup>2</sup>
Dining Rooms	1	Land Size	661m <sup>2</sup>



Johan de Wet  
 083 306 2484  
[johandewet@greeff.co.za](mailto:johandewet@greeff.co.za)



Louisa De Wet  
 084 498 2844  
[louisa@greeff.co.za](mailto:louisa@greeff.co.za)

Whale Coast  
 173 Main Road , Hermanus, Western Cape, 7200  
 (028) 3122241 | [whalecoast@greeff.co.za](mailto:whalecoast@greeff.co.za)

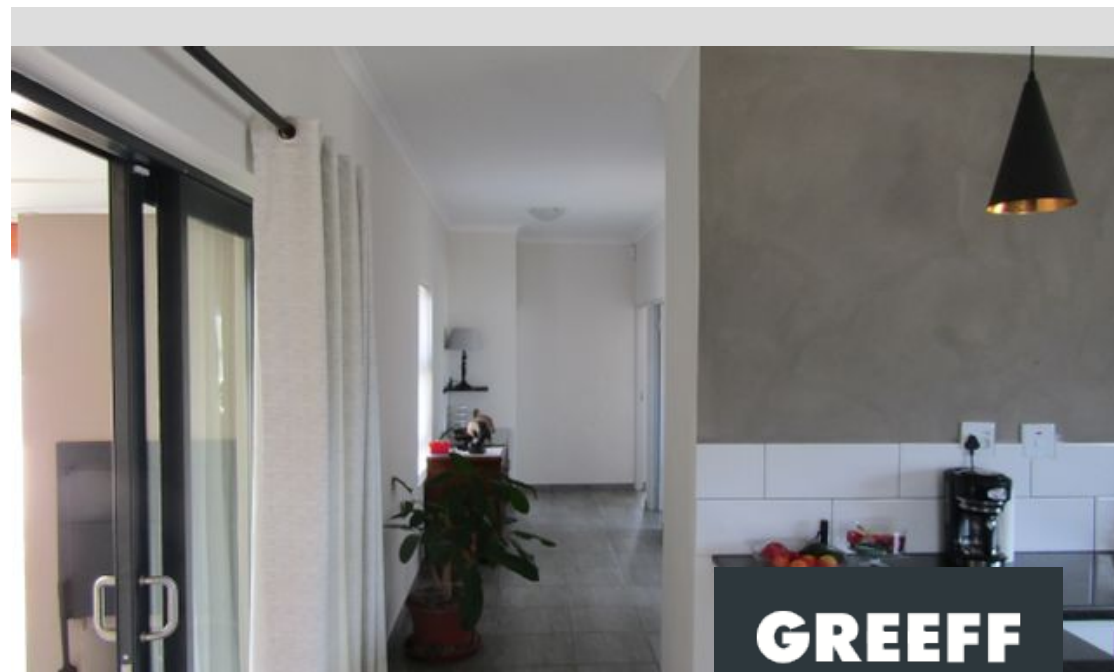
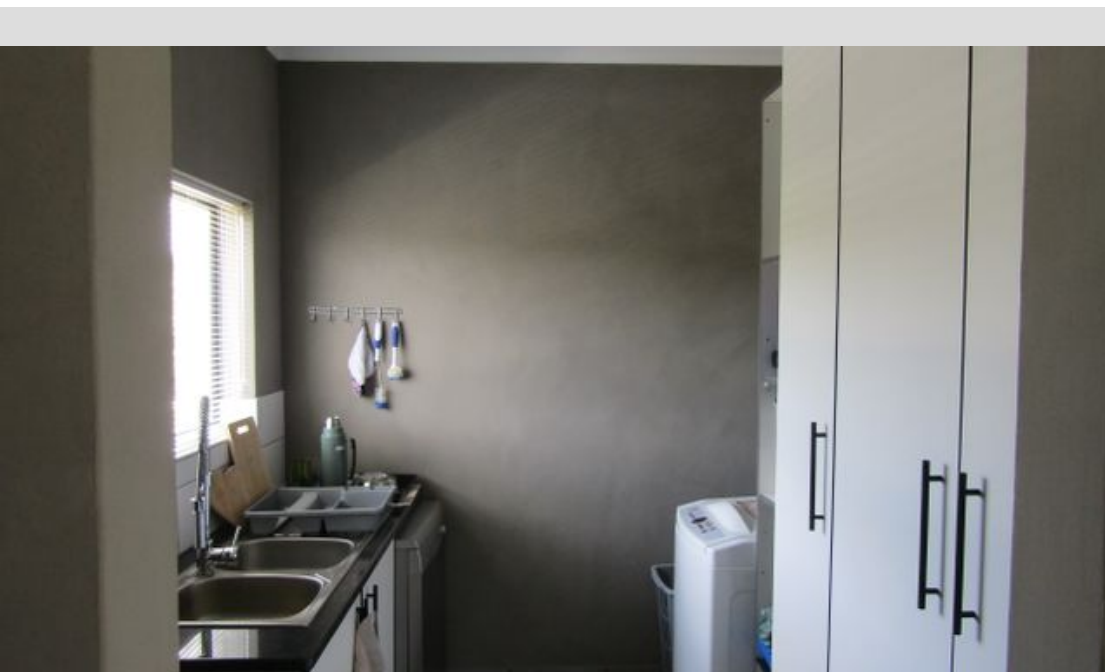
**GREEFF**

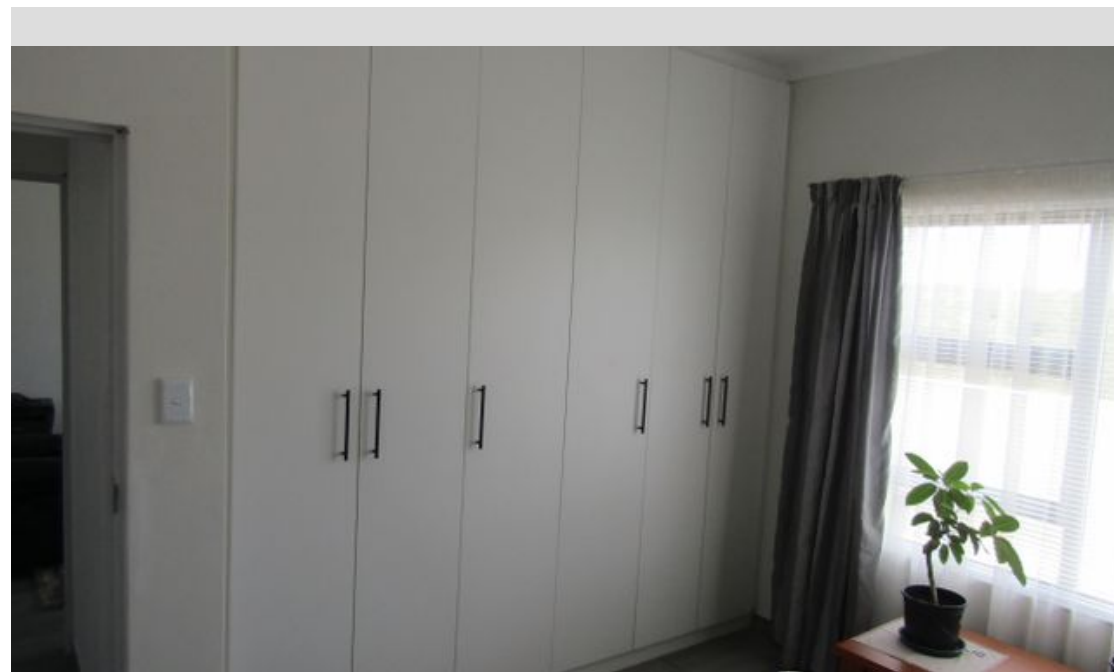
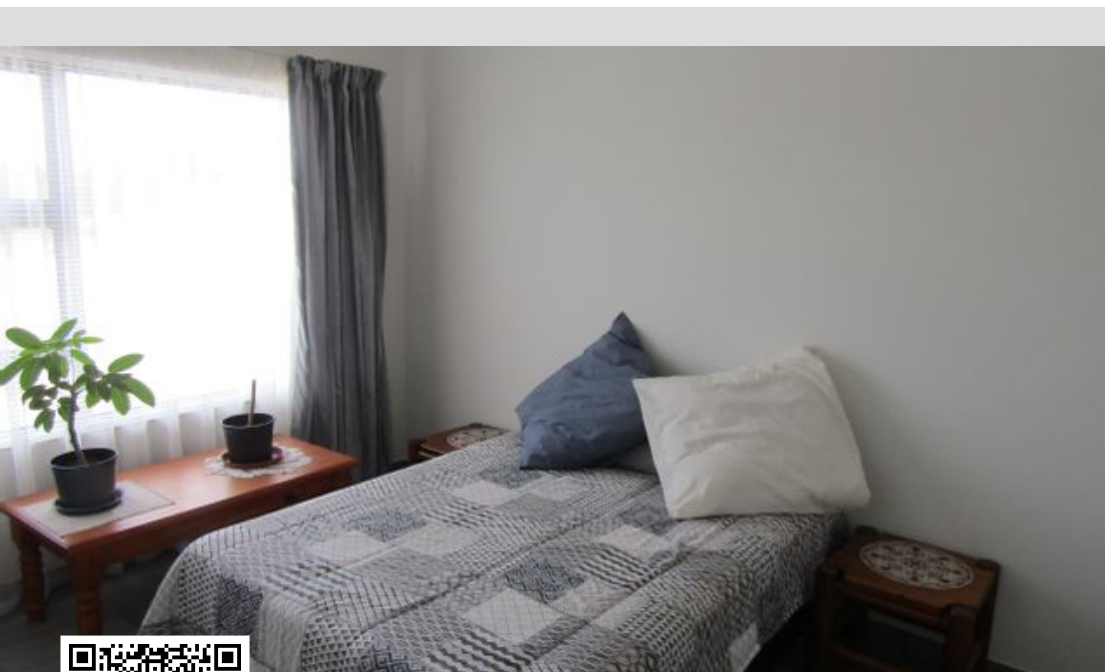
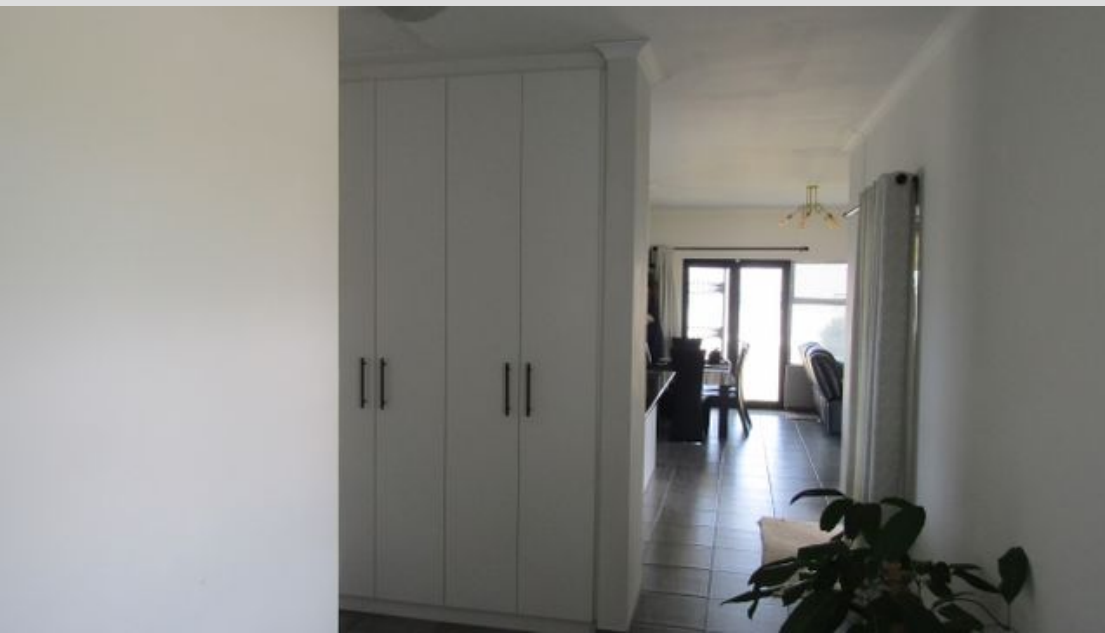
**CHRISTIE'S**  
 INTERNATIONAL REAL ESTATE

*Where it counts*

Exclusive Affiliates of Christie's International Real Estate. E & OE







Web Ref RL21566  
<https://www.greeff.co.za>