



● Gansbaai, Pearly Beach

GREEFF

CHRISTIE'S
INTERNATIONAL REAL ESTATE



R1,925,000



Lock up and go house in Pearly Beach Resort

This beautiful 3 bedroom house is with a bathroom and a separate quest toilet is well maintained and ready for occupation without renovations. The house has a car port behind the gate. The kitchen and living areas is open plan which give the impression of space. There is a build-in braai where you can relax and enjoy the time with friends. The children can play in this save open space while you relax from a hard days work back at the office. The walkway to the sandy beaches of Pearly Beach is very close. Pearly Beach is blessed with very good fishing spots. This sought after Pearly Beach Resort is a very secured neighbourhood, with gated control and a neighbourhood watch. Pearly Beach is only about 25 kms from Gansbaai, 70 kms from Hermanus and about 170 kms...



Web Ref RL22579
<https://www.greeff.co.za>

Features

Interior	Exterior	Sizes			
Bedrooms	3	Carpports/Parkings	1	Floor Size	100m ²
Bathrooms	1	Pool	No	Land Size	149m ²
Recep. Rooms	2				
Dining Rooms	1				



Johan de Wet
 083 306 2484
johandewet@greeff.co.za



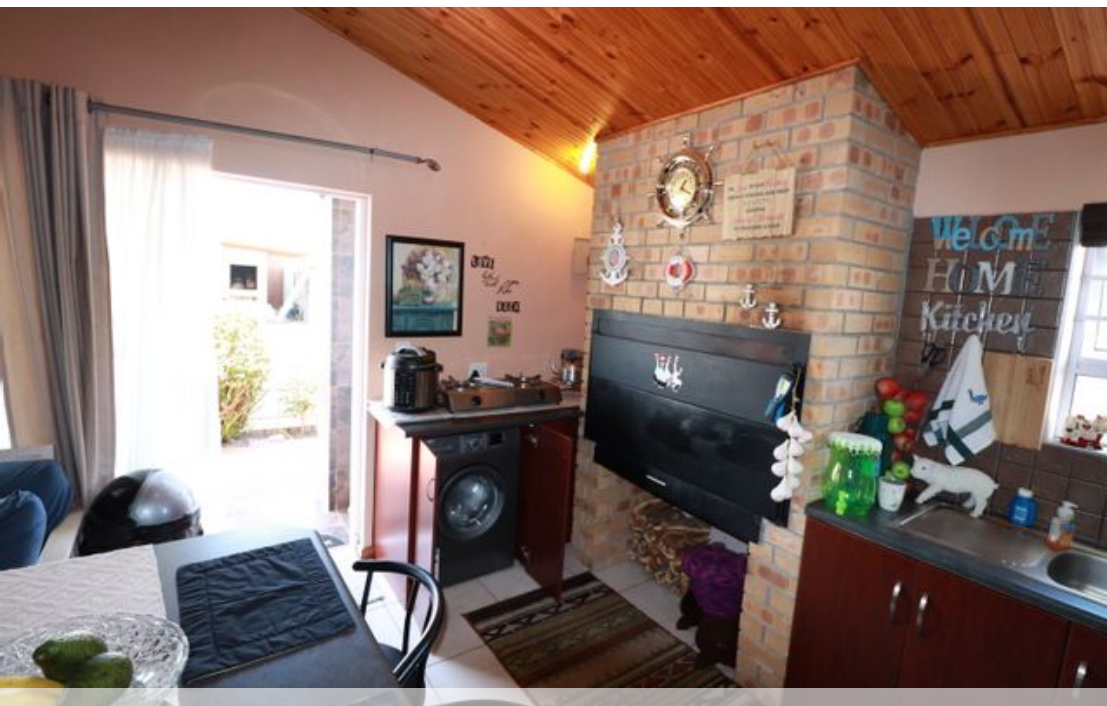
Louisa De Wet
 084 498 2844
louisa@greeff.co.za

Whale Coast
 173 Main Road , Hermanus, Western Cape, 7200
 (028) 3122241 | whalecoast@greeff.co.za



Where it counts

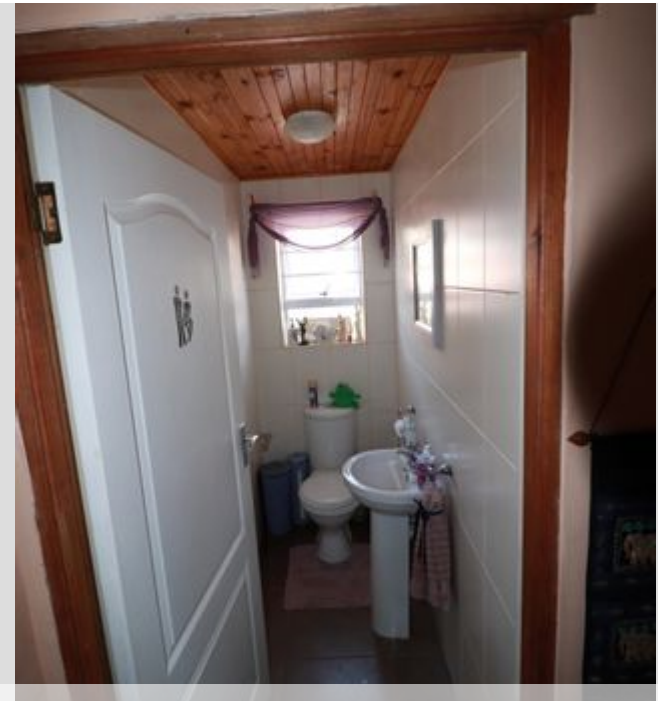
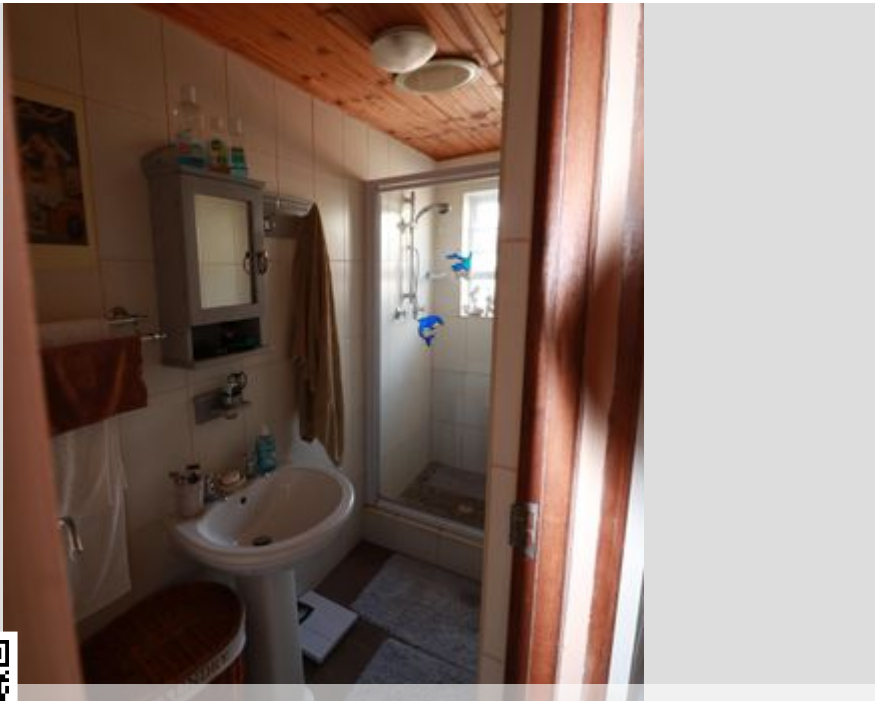
Exclusive Affiliates of Christie's International Real Estate. E & OE



● Gansbaai, Pearly Beach

GREEFF

CHRISTIE'S
INTERNATIONAL REAL ESTATE



Web Ref RL22579
<https://www.greeff.co.za>