



● Gansbaai, Perlemoenbaai

GREEFF



CHRISTIE'S
INTERNATIONAL REAL ESTATE



R1,490,000



4 Bedroom Home in Perlemoenbaai

Double Story Home - Walking distance from beach front and Gansbaai CBD. Ground Floor: Features two bedrooms and a double garage with direct access. Includes a convenient guest toilet. First Floor: An open-plan kitchen and living area complete with a built-in braai, leading out to a porch. This level also has two bedrooms, including a dressing room or study, and a full bathroom. Enjoy stunning mountain views from this partly fenced property. While the home requires some attention, it presents a great project opportunity. There's plenty of outdoor space for children to play or for pets to roam.



Web Ref RL23903
<https://www.greeff.co.za>

Features

| Interior | Exterior | Sizes | | | |
|--------------|----------|-------------------|----|------------|-------------------|
| Bedrooms | 4 | Carports/Parkings | 6 | Floor Size | 144m ² |
| Bathrooms | 1 | Pool | No | Land Size | 547m ² |
| Recep. Rooms | 1 | | | | |
| Dining Rooms | 1 | | | | |



Alecia De Villiers
 0833593643
alecia@greeff.co.za

Whale Coast
 173 Main Road , Hermanus, Western Cape, 7200
 (028) 3122241 | whalecoast@greeff.co.za

GREEFF

CHRISTIE'S
 INTERNATIONAL REAL ESTATE

Where it counts

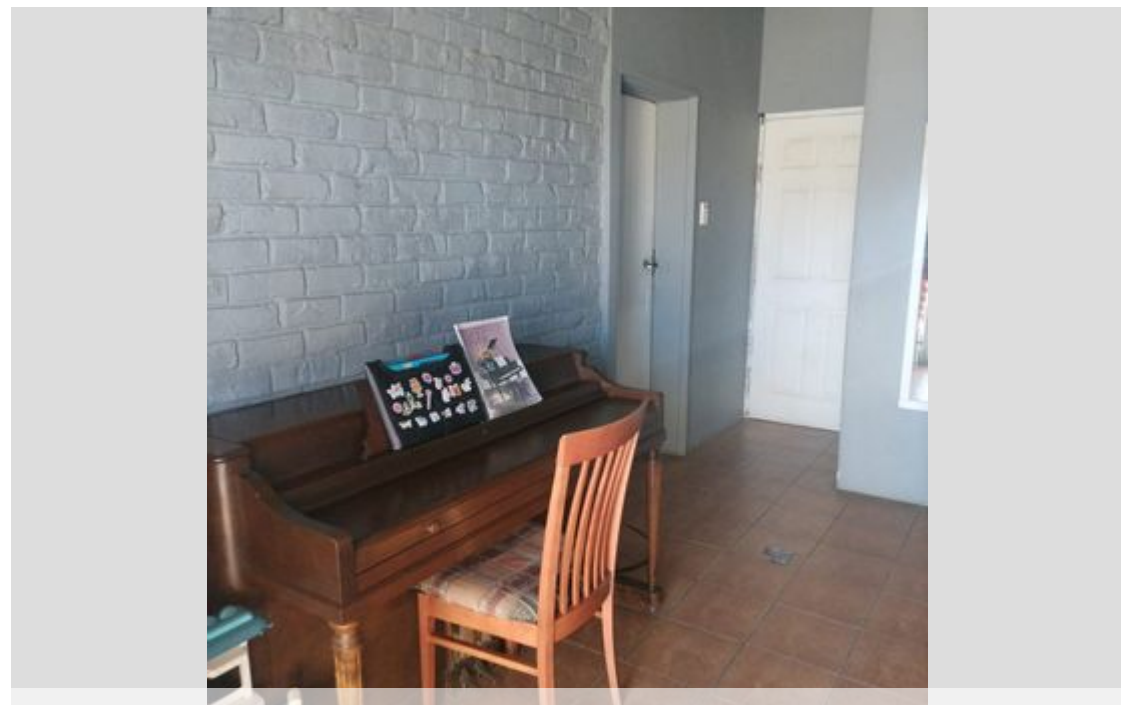
Exclusive Affiliates of Christie's International Real Estate. E & OE



● Gansbaai, Perlemoenbaai

GREEFF

CHRISTIE'S
INTERNATIONAL REAL ESTATE



Web Ref RL23903
<https://www.greeff.co.za>