



● Hermanus, **Chanteclair**

**GREEFF**



CHRISTIE'S  
INTERNATIONAL REAL ESTATE





**R9,950,000**

 4
  4.5
  4

*La vie est faite de petit bonheur - "Life is made of small pleasures"*

-Exclusive Sole Mandate- Indeed an apt description written on the kitchen blackboard of this magnificently designed, spacious 4 bedroom home in the exclusive Leopard Rock Estate. The double volume portico and massive floor to ceiling picture window creates a lovely and hearty welcome. A massive cantilever beam creates a majestically unobstructed view of Walker Bay and will have your guests enthralled. The architect has cleverly managed a fantastic flow with the easily accessible garage leading into the lounge, dining, braai, master bedroom, kitchen all on ground floor. The Main ensuite walks out onto a large balcony with a fixed flat roof glass skylight for precious light below. All cupboards have been fitted with inobtrusive recessed automatic LED...



Web Ref RL21029  
<https://www.greeff.co.za>

## Features

Interior	Exterior	Sizes
Bedrooms	4	Floor Size
Bathrooms	4.5	Land Size
Recep. Rooms	3	
Dining Rooms	1	
	Carports/Parkings	4
	Pool	Yes
		415m <sup>2</sup>
		1,440m <sup>2</sup>



Dewald Botha  
 083 650 0512  
[dewald@greeff.co.za](mailto:dewald@greeff.co.za)

Whale Coast  
 173 Main Road, Hermanus, Western Cape, 7200  
 (028) 3122241 | [whalecoast@greeff.co.za](mailto:whalecoast@greeff.co.za)

**GREEFF**

CHRISTIE'S  
 INTERNATIONAL REAL ESTATE

*Where it counts*

Exclusive Affiliates of Christie's International Real Estate. E & OE



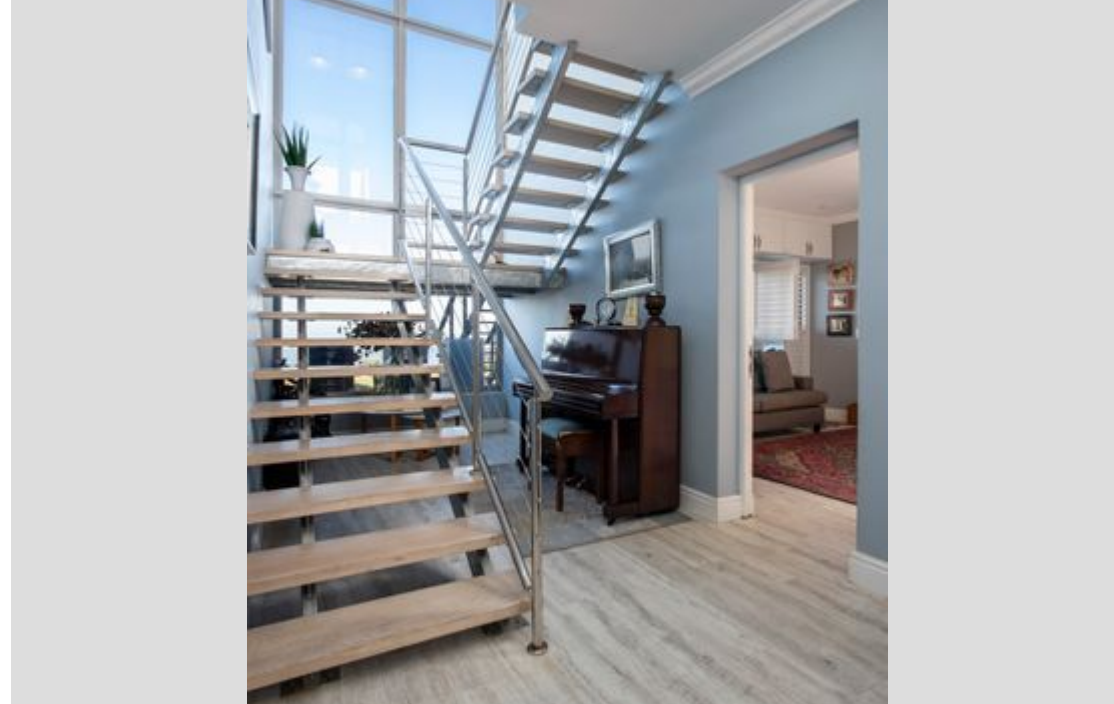


● Hermanus, Chanteclair

**GREEFF**

**CHRISTIE'S**  
INTERNATIONAL REAL ESTATE





Web Ref RL21029  
<https://www.greeff.co.za>