



● Hermanus, Fisherhaven

GREEFF

CHRISTIE'S
INTERNATIONAL REAL ESTATE



R2,490,000

 3
  1.5
  6

Not looking for a tiny home?

Spacious is an understatement. Passage is roughly 1.3meters wide. Huge main bedroom and guest bedroom. This beautifully maintained home offers an abundance of space, designed with modern living in mind. Boasting three generously sized bedrooms, one full bathroom, and a convenient guest toilet, this home is perfect for both relaxation and entertaining. The large open-plan kitchen, dining, and lounge areas create a seamless flow, ideal for families or those who love to host. Natural light fills the home thanks to four sliding doors that open directly into the garden, bringing the outdoors in and creating a bright, airy atmosphere throughout. The spacious lounge and dining areas, along with the well-appointed kitchen, offer plenty of room for cooking, dining, and...



Web Ref RL23601
<https://www.greeff.co.za>

Features

Interior	Exterior	Sizes
Bedrooms	3	Floor Size
Bathrooms	1.5	Land Size
Recep. Rooms	2	
Dining Rooms	1	
	Carports/Parkings	226m ²
	Pool	1,487m ²
	Yes	



Thys Malan
 0769663302
thys@greeff.co.za

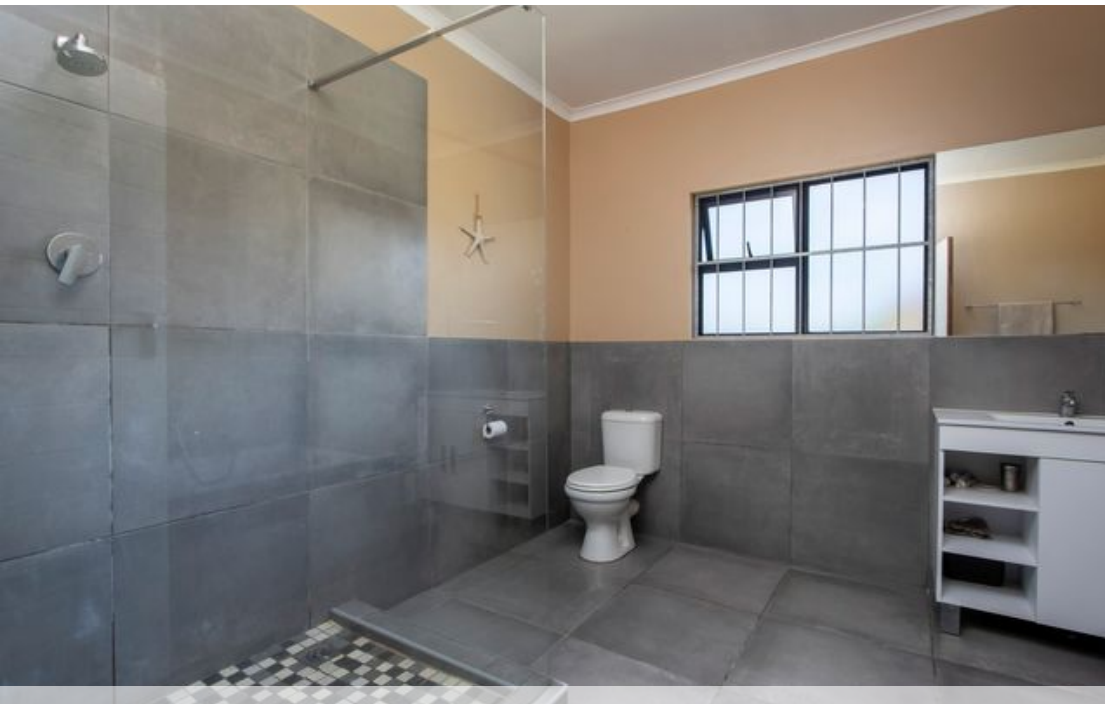
Whale Coast
 173 Main Road , Hermanus, Western Cape, 7200
 (028) 3122241 | whalecoast@greeff.co.za

GREEFF

CHRISTIE'S
INTERNATIONAL REAL ESTATE

Where it counts

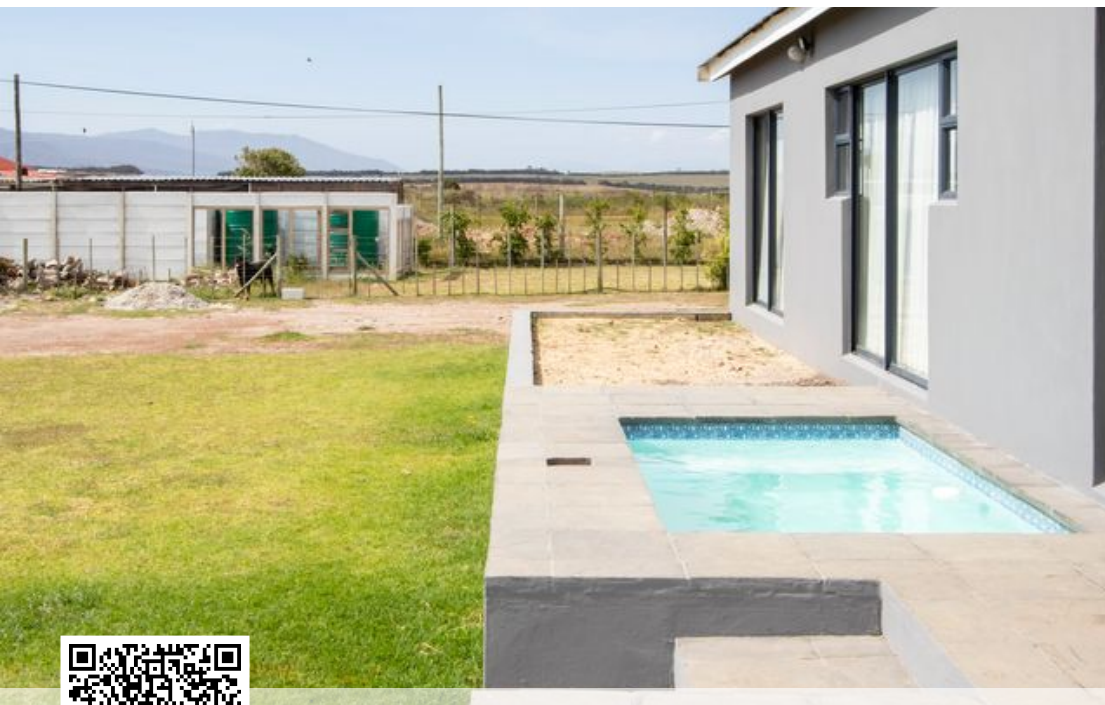
Exclusive Affiliates of Christie's International Real Estate. E & OE



● Hermanus, Fisherhaven

GREEFF

CHRISTIE'S
INTERNATIONAL REAL ESTATE



Web Ref RL23601
<https://www.greeff.co.za>