



● Hermanus, **Hemel en Aarde Estate**

GREEFF



CHRISTIE'S
INTERNATIONAL REAL ESTATE



R7,900,000

 4
  3.5
  2

Exceptional Family Home in Secure Estate

JOINT MANDATE - If you seek a blend of privacy, space, and security in a distinguished estate, this remarkable family home in a tranquil cul-de-sac, adjacent to lush green space, is the perfect choice. The ground level welcomes you with an open-plan lounge, dining room, and kitchen, showcasing ample cupboard space, a walk-in pantry, and a separate scullery and laundry room. The inviting fireplace in the lounge adds warmth, while the enclosed veranda, featuring an indoor barbecue and stacker doors, opens to a spacious lawn—ideal for children and pets. Also on this level is a well-appointed bedroom with a full bathroom and a generous walk-in closet. Upstairs, a versatile family lounge and workspace provide additional living options. Both en-suite bedrooms come with...



Web Ref RL23102
<https://www.greeff.co.za>

Features

Interior	Exterior	Sizes
Bedrooms	4	Floor Size
Bathrooms	3.5	Land Size
Recep. Rooms	3	
Dining Rooms	1	
	Carports/Parkings	551m ²
	Pool	787m ²
	No	



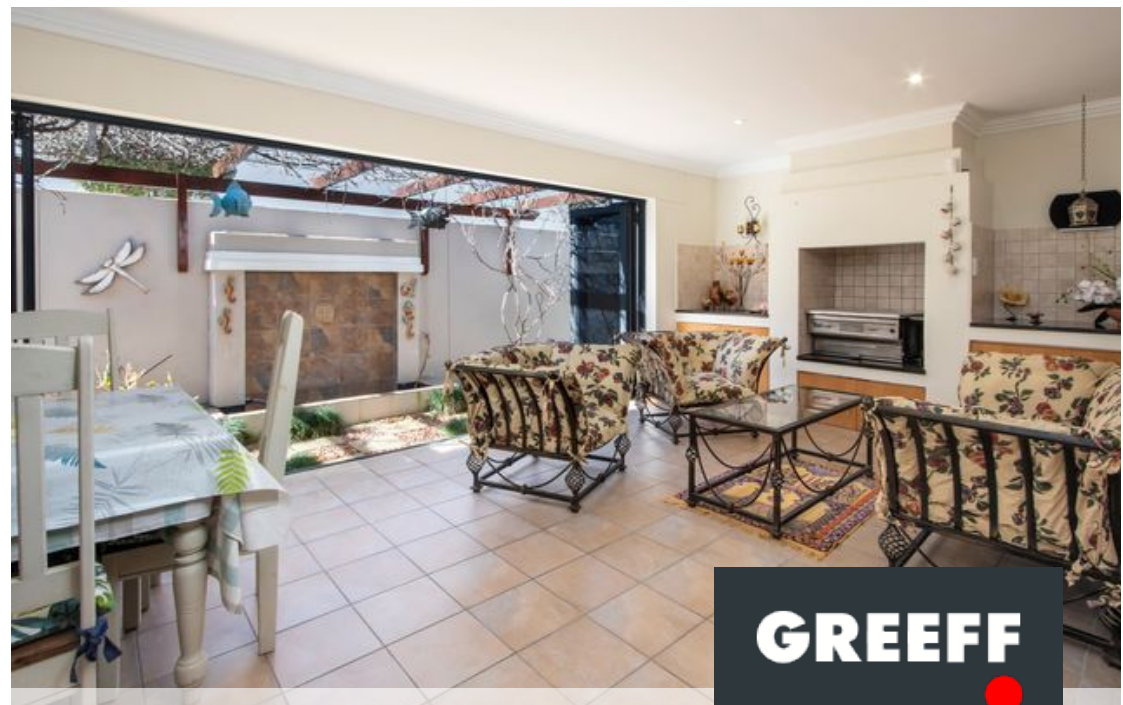
Bernice De Wet
 083 233 8472
bernice@greeff.co.za

Whale Coast
 173 Main Road , Hermanus, Western Cape, 7200
 (028) 3122241 | whalecoast@greeff.co.za



Where it counts

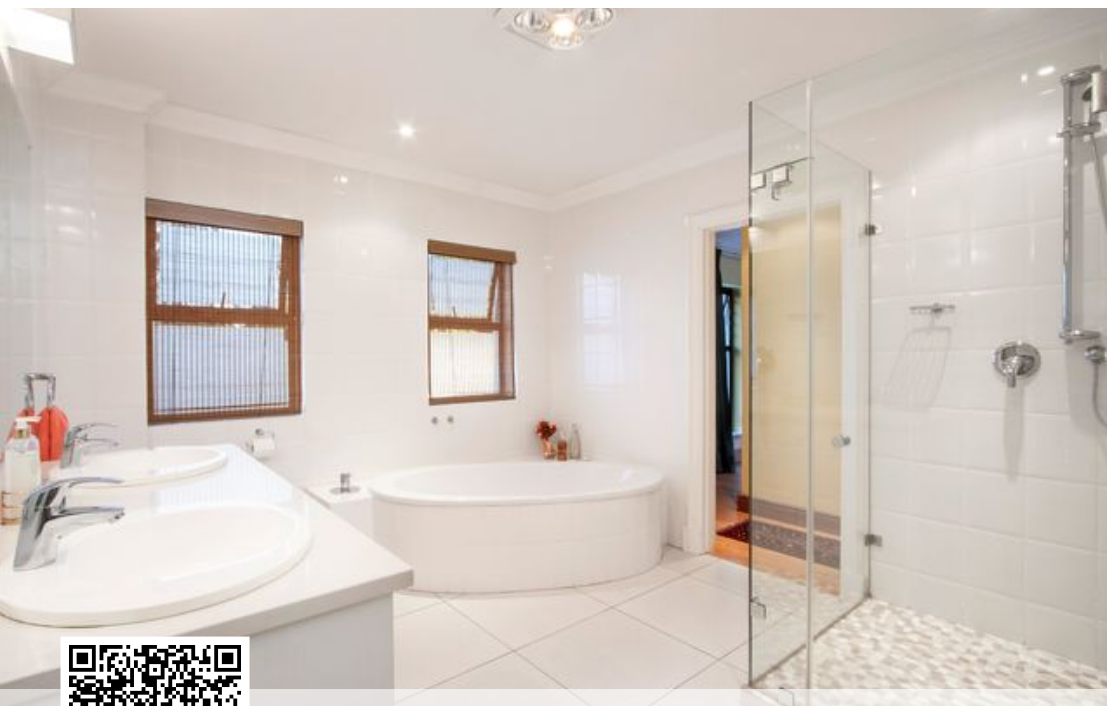
Exclusive Affiliates of Christie's International Real Estate. E & OE



● Hermanus, Hemel en Aarde Estate

GREEFF

CHRISTIE'S
INTERNATIONAL REAL ESTATE



Web Ref RL23102
<https://www.greeff.co.za>