



● Hermanus, **Vermont**

GREEFF



CHRISTIE'S
INTERNATIONAL REAL ESTATE



R5,995,000

 6
  4.5
  4

Two Homes in One – Breathtaking Views & Coastal Living at Its Best!

Greeff Christie's Exclusive Sole Mandate - Viewing by appointment only. This is a rare opportunity to own a larger-than-average home with exceptional potential in the stunning coastal area of Vermont. Whether you're a large or extended family, or an investor seeking income-generating opportunities, this spacious six-bedroom home offers endless possibilities. With three bedrooms upstairs and three downstairs (including two en-suite), the layout allows for a dual-living arrangement or the potential to convert the property into two complete 3-bedroom homes. The downstairs kitchenette and dedicated laundry room further add to the convenience and flexibility. Boasting breathtaking ocean and mountain views, the open-plan living spaces are framed by high



Web Ref RL24041
<https://www.greeff.co.za>

Features

Interior	Exterior	Sizes			
Bedrooms	6	Carports/Parkings	4	Floor Size	494m ²
Bathrooms	4.5	Pool	No	Land Size	634m ²
Recep. Rooms	4				
Dining Rooms	2				



Richard Disley
 064 537 4127
richard@greeff.co.za



Charmaine Hunter
 064 531 5085
charmaine@greeff.co.za

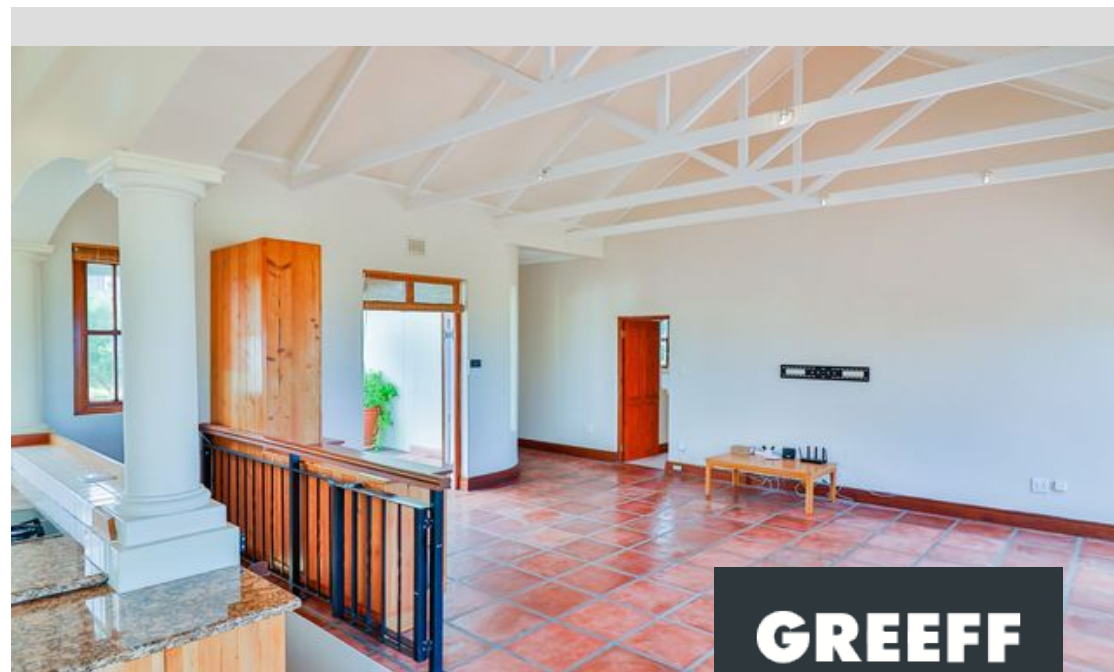
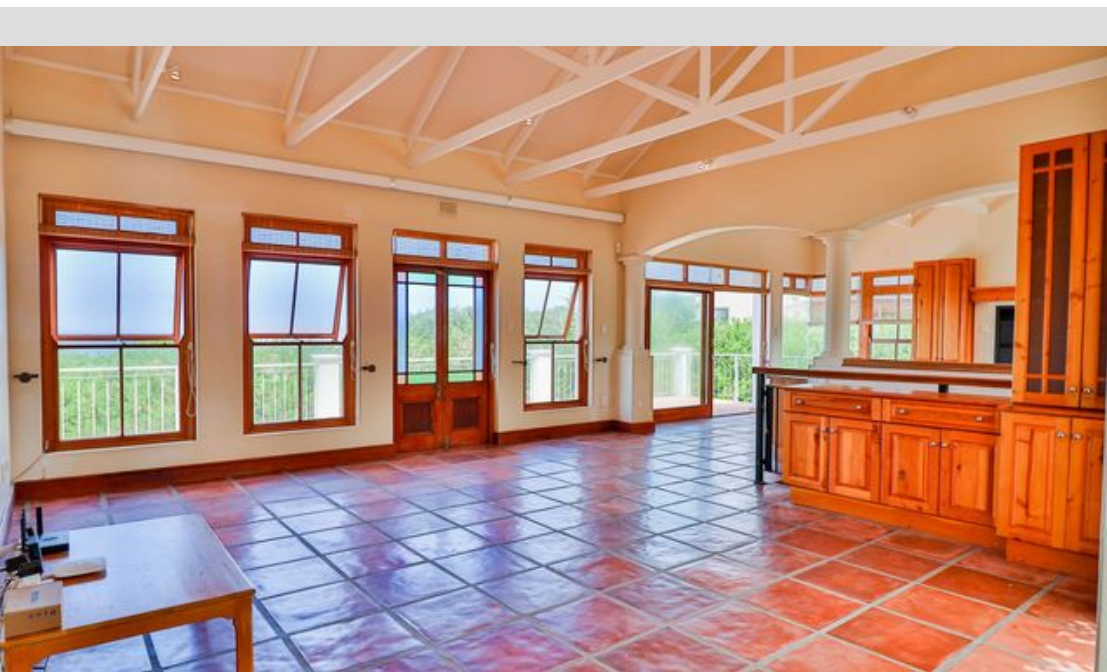
Whale Coast
 173 Main Road , Hermanus, Western Cape, 7200
 (028) 3122241 | whalecoast@greeff.co.za

GREEFF

CHRISTIE'S
INTERNATIONAL REAL ESTATE

Where it counts

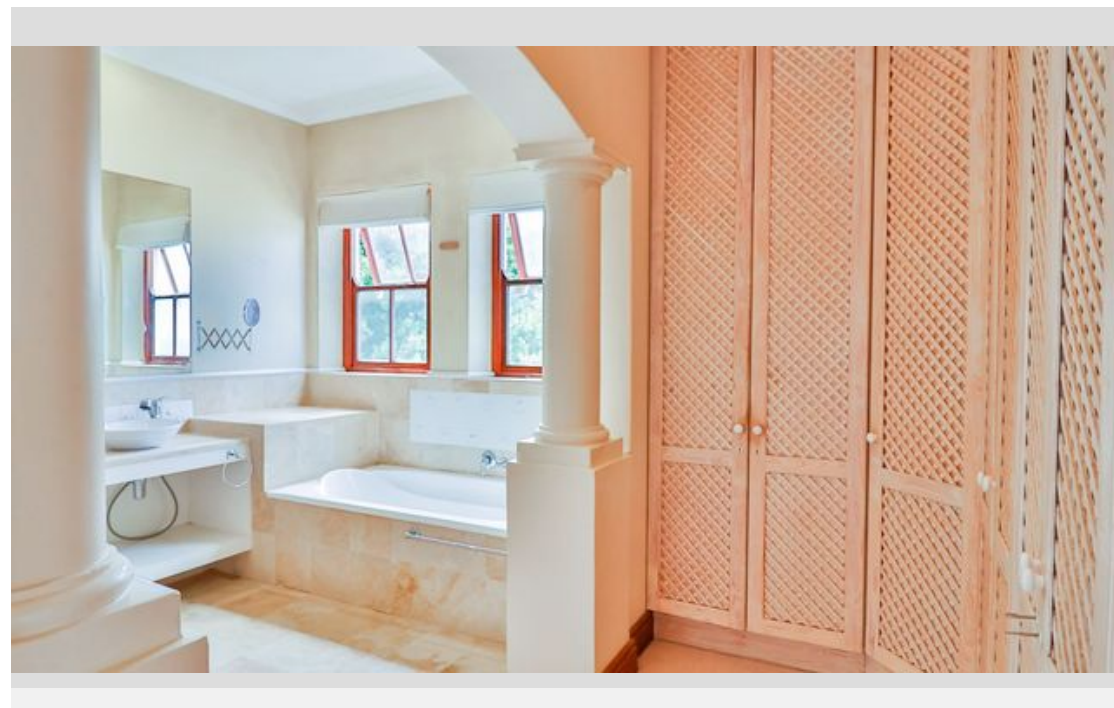
Exclusive Affiliates of Christie's International Real Estate. E & OE



● Hermanus, Vermont

GREEFF

CHRISTIE'S
INTERNATIONAL REAL ESTATE



Web Ref RL24041
<https://www.greeff.co.za>