



● Hermanus, **Westcliff**

GREEFF

CHRISTIE'S
INTERNATIONAL REAL ESTATE



R2,400,000



A Beginner Home or for an Investor

This easy open plan home ticks all the boxes for a new start or purely just for an investor. Situated in the heart of Mainers Village, a popular security estate in Westcliff, it offers modern finished and a cozy open plan living. This security estate is situated only 3 blocks away from the breathtaking cliff paths and conveniently close to all amenities. The estate also gives the resident the opportunity and pleasure to enjoy the abundant Fynbos paths in peace and in safety. An ideal lock up a go for the young or for the elderly. The investor can easily achieve a rental income at around R12 000pm. Rates and Taxes: R500 pm Levies: R800 pm

Features

Interior	Exterior	Sizes	
Bedrooms	2	Carports/Parkings	1
Bathrooms	2	Pool	No
Recep. Rooms	2	Floor Size	115m ²
Dining Rooms	1	Land Size	306m ²



Martin Barnard
076 157 0598
martin@greeff.co.za

Whale Coast
173 Main Road , Hermanus, Western Cape, 7200
(028) 3122241 | whalecoast@greeff.co.za



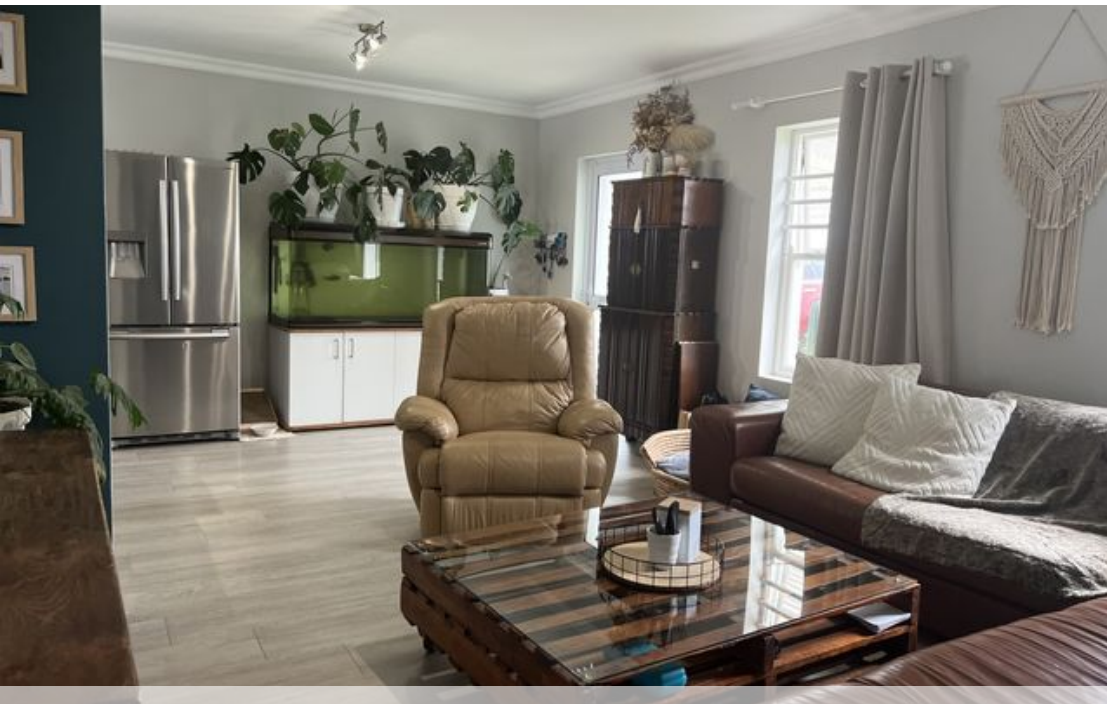
Web Ref RL20790
<https://www.greeff.co.za>

GREEFF

CHRISTIE'S
INTERNATIONAL REAL ESTATE

Where it counts

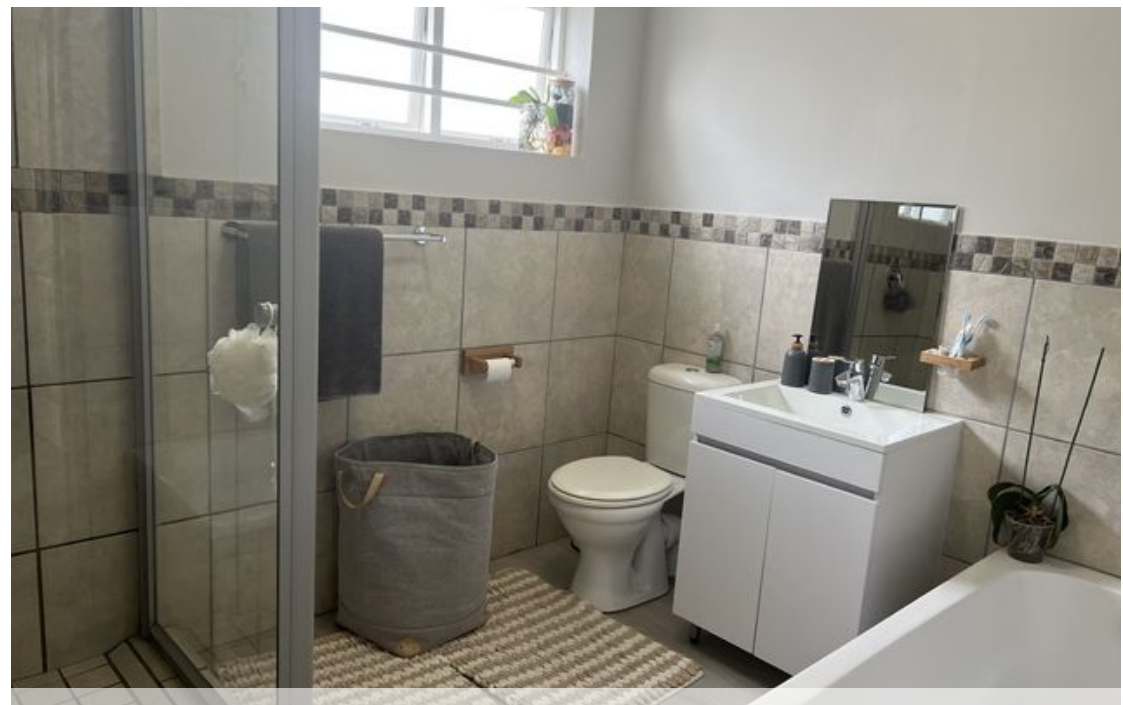
Exclusive Affiliates of Christie's International Real Estate. E & OE



● Hermanus, Westcliff

GREEFF

CHRISTIE'S
INTERNATIONAL REAL ESTATE



Web Ref RL20790
<https://www.greeff.co.za>