



● Hout Bay, Mount Rhodes

**GREEFF**



CHRISTIE'S  
INTERNATIONAL REAL ESTATE





**R8,600,000**

 5
  2.5
  5

*Beautifully renovated home with Table Mountain views in secure, exclusive sectional title estate*

This is an unique opportunity to buy into a high-end sectionalized property in Mount Rhodes. Nestled in an exclusive and serene part of Hout Bay, this newly-renovated luxury house offers sweeping views of Table Mountain and Hout Bay valley. A prime investment or idyllic retreat for your family. This offering includes a 260 sqm home and 44 sqm garage within a mature garden. Investment Located in a high capital growth region between high-end neighbourhoods such as Llandudno, Ruyteplaats and Kerzner estate. This area is in high demand due to its proximity to mountains, beaches, amenities in Hout Bay and easy access to Cape Town city center. Interior Living Spaces Experience open-plan living with contemporary design elements that merge the surrounding...



Web Ref RL23815  
<https://www.greeff.co.za>

## Features

Interior	Exterior	Sizes
Bedrooms	5	Floor Size
Bathrooms	2.5	Land Size
Recep. Rooms	2	
Dining Rooms	1	
	Carports/Parkings	304m <sup>2</sup>
	Pool	1,000m <sup>2</sup>
	No	



Friedel McLachlan  
 082 320 9473  
[friedel@greeff.co.za](mailto:friedel@greeff.co.za)

Hout Bay / Llandudno  
 Shop B5 Mainstream Mall, Corner Princess Street  
 and Main Road, Hout Bay, Cape Town, 7806,  
 Western Cape, South Africa

**GREEFF**

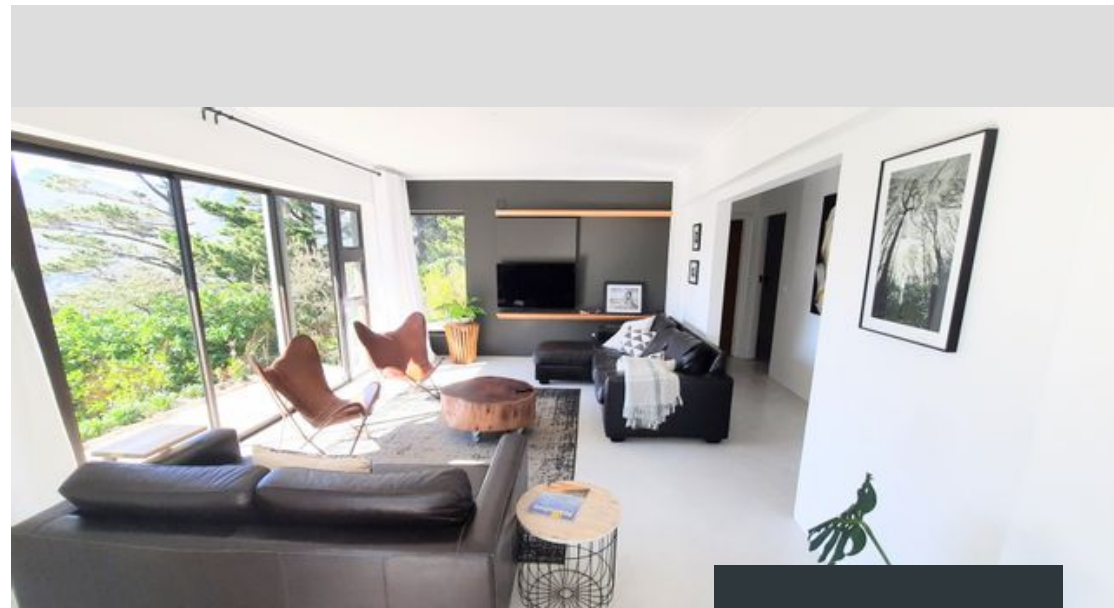
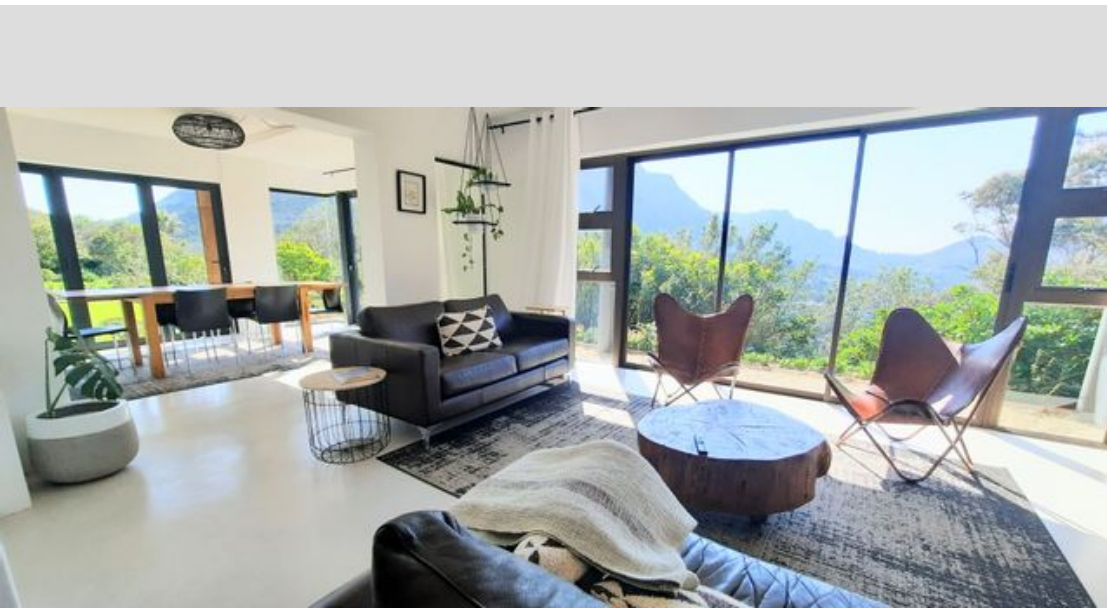
CHRISTIE'S  
 INTERNATIONAL REAL ESTATE

[eff.co.za](https://www.greeff.co.za)

*Where it counts*

Exclusive Affiliates of Christie's International Real Estate. E & OE





● Hout Bay, Mount Rhodes

**GREEFF**

CHRISTIE'S  
INTERNATIONAL REAL ESTATE





Web Ref RL23815  
<https://www.greeff.co.za>