



● Hout Bay, Mount Rhodes

GREEFF

CHRISTIE'S
INTERNATIONAL REAL ESTATE



R6,800,000

 3
  2.5
  4

RELAXED FAMILY HOME

The solid 3 bedroomed family home is situated on 1919sqm. The garden is beautiful with mature trees and foliage. The roses are in full bloom and add a delightful feel to the garden. The house has separate living and dining areas and a large kitchen with a breakfast table, ideal for casual meals. Downstairs is a large study or family room. The various water tanks on the property feed to the main water tank which filters through a filtration system for use in the main house. The property also features a double garage with controlled access, solar panels and an inverter. Mount Rhodes is a Community Improvement District. Fully fenced with cameras at various observation points and linked to Deep Blue Security.

Features

Interior	Exterior	Sizes
Bedrooms 3	Carports/Parkings 4	Land Size 1,919m ²
Bathrooms 2.5	Pool No	
Recep. Rooms 2		
Dining Rooms 1		



Suzette Wrankmore
083 658 8610
suzette@greeff.co.za



Jenny Barbour
071 611 9702
jenny@greeff.co.za

Hout Bay / Llandudno
Shop B5 Mainstream Mall, Corner Princess Street
and Main Road, Hout Bay, Cape Town, 7806,
Western Cape, South Africa

GREEFF

CHRISTIE'S
INTERNATIONAL REAL ESTATE

eff.co.za

Where it counts

Exclusive Affiliates of Christie's International Real Estate. E & OE



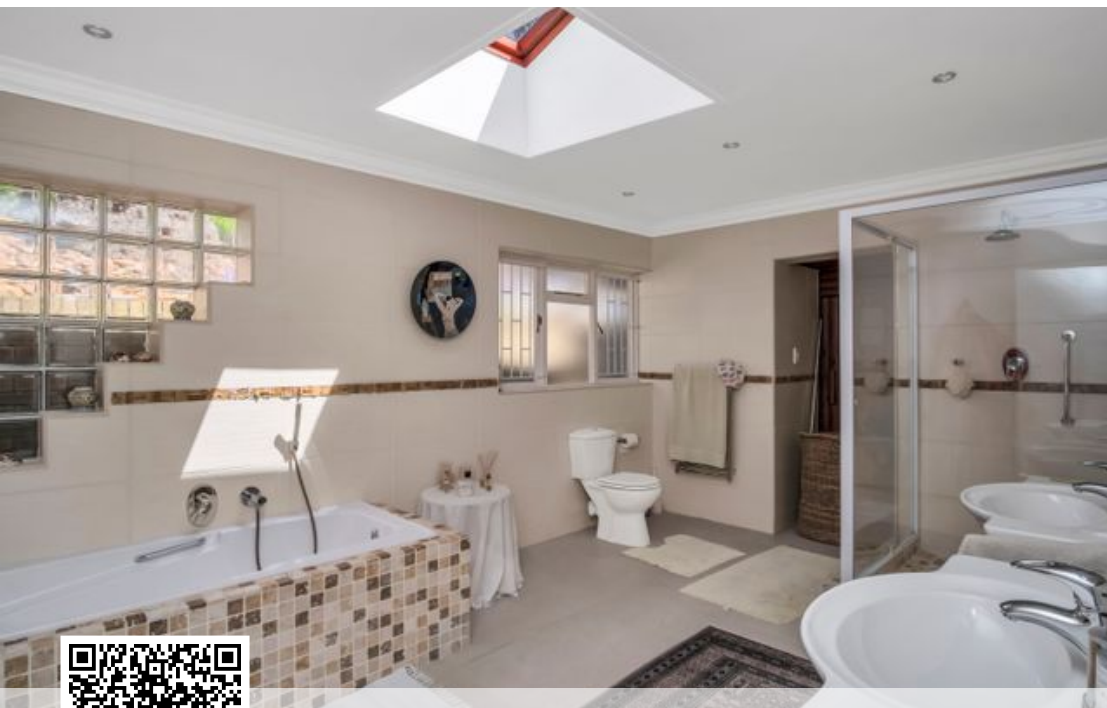
Web Ref RL23534
<https://www.greeff.co.za>



● Hout Bay, Mount Rhodes

GREEFF

CHRISTIE'S
INTERNATIONAL REAL ESTATE



Web Ref RL23534
<https://www.greeff.co.za>