



● Hout Bay, **Valley Area**

GREEFF

CHRISTIE'S
INTERNATIONAL REAL ESTATE



R7,995,000



MODERN FAMILY HOME

Stunning Modern Family Home with Spectacular Mountain views. This architecturally designed, newly built modern family home offers exceptional style and comfort. Key Features Include: 4 spacious bedrooms, a study, & 3 contemporary bathrooms. Stylish open-plan design with floor-to-ceiling double-height, windows for natural light and breathtaking views. Double-glazed windows for energy efficiency and a closed combustion fireplace for cozy family evenings. A modern Kitchen with a separate scullery and pantry flows onto the dining room and effortlessly to the outdoors. Outdoor Space: Breathtaking views, set on a generous 1013 m² plot with a landscaped indigenous garden, perfect for relaxation or entertaining. The back, gravelled area of the home offers a family the space to...



Web Ref RL23707
<https://www.greeff.co.za>

Features

Interior	Exterior	Sizes			
Bedrooms	4	Carports/Parkings	6	Floor Size	300m ²
Bathrooms	3	Pool	No	Land Size	1,013m ²
Recep. Rooms	2				
Dining Rooms	1				



Marjorie Goode
 082 877 2822
marjorie@greeff.co.za



Elke Wiswedel
 083 641 6950
elke@greeff.co.za

Hout Bay / Llandudno
 Shop B5 Mainstream Mall, Corner Princess Street
 and Main Road, Hout Bay, Cape Town, 7806,
 Western Cape, South Africa

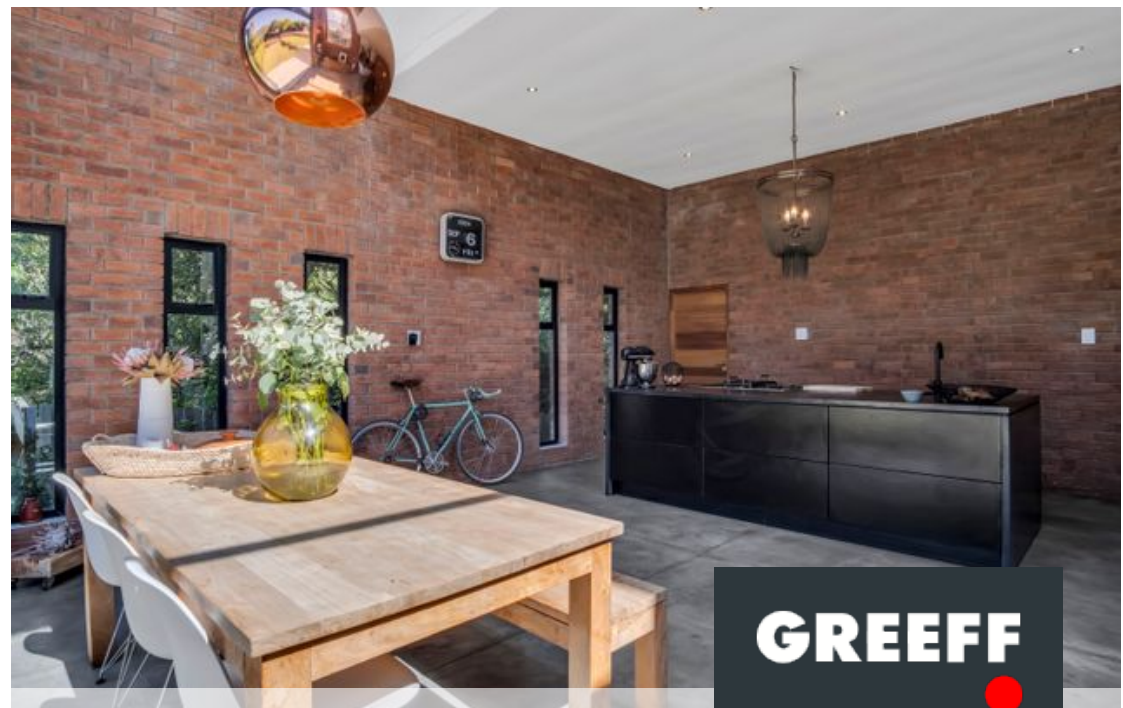
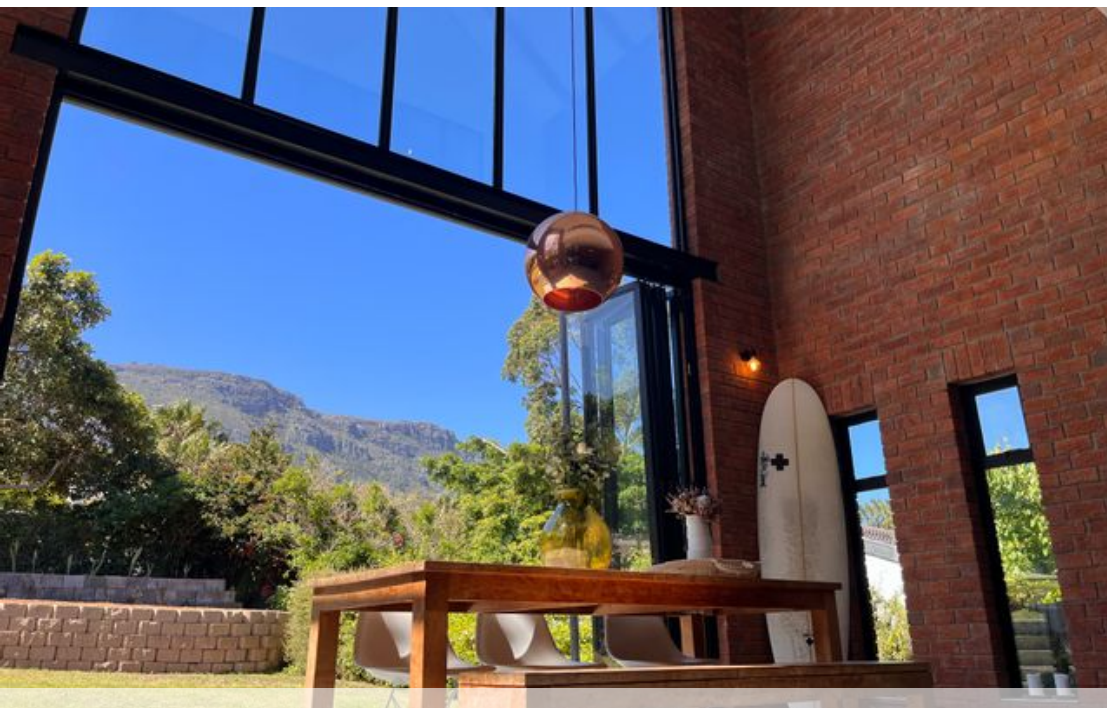
GREEFF

CHRISTIE'S
 INTERNATIONAL REAL ESTATE

[greeff.co.za](https://www.greeff.co.za)

Where it counts

Exclusive Affiliates of Christie's International Real Estate. E & OE



● Hout Bay, Valley Area



Web Ref RL23707
<https://www.greeff.co.za>