



● Kleinmond, Arabella

GREEFF

CHRISTIE'S
INTERNATIONAL REAL ESTATE



R8,750,000



Country and Fairway views in full swing in Arabella

Exclusive Mandate. A property in Arabella offering a "mini-hotel feel". Introducing this immaculate North facing and spacious 5 bedroom property. Seamlessly blending in with the natural surroundings of the Koegelberg biosphere. Located in a quiet cul-de-sac and low traffic prime location on the estate. The garden not only adds to the aesthetic appeal but also attracts an array of local birdlife, creating a tranquil and serene atmosphere. Sought after views of the surrounding mountain range , dam, wheat fields, fairway and meandering Bot River. Standout features to this property investment include: • Five spacious bedrooms, all en-suite. • The downstairs terrace and open plan lounge is appointed with newly installed stackable doors. • The upstairs balcony offers...



Web Ref RL21431
<https://www.greeff.co.za>

Features

Interior	Exterior	Sizes			
Bedrooms	5	Carports/Parkings	4	Floor Size	339m ²
Bathrooms	5	Pool	No	Land Size	677m ²
Recep. Rooms	3				
Dining Rooms	1				



Bhavinee Siepman
 082 797 6233
 bhavinee@greeff.co.za

Helderberg
 Cnr Main Road & Coronation Road, Somerset West,
 7130
 (021) 2058284 | helderberg@greeff.co.za



Where it counts

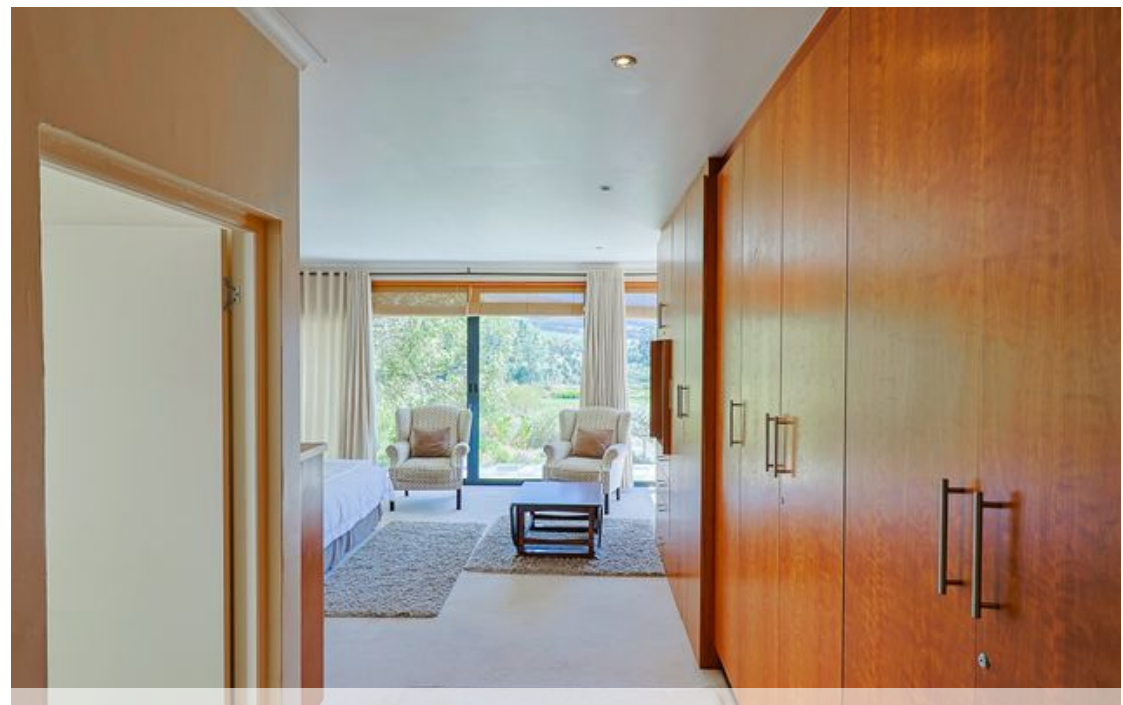
Exclusive Affiliates of Christie's International Real Estate. E & OE



● Kleinmond, Arabella

GREEFF

CHRISTIE'S
INTERNATIONAL REAL ESTATE



Web Ref RL21431
<https://www.greeff.co.za>