



● Kleinmond, Arabella

**GREEFF**



**CHRISTIE'S**  
INTERNATIONAL REAL ESTATE



**R8,400,000**



## *Something special in Arabella*

Exclusive Mandate. An exceptionally well maintained property in Arabella. Introducing this immaculate and spacious 4 bedroom all en-suite property. Located in a peaceful cul-de-sac in a favourable location on the estate. Standout features to this property investment include: • Four spacious bedrooms, all en-suite and solid wood flooring. • A downstairs terrace opening up onto the private garden. • The spacious upstairs loft is equipped two study nooks and offers spectacular views of the 8th fairway and surrounding countryside. • A well-appointed kitchen. • A large downstairs open plan lounge area equipped with a wood burning fireplace. • A single garage with direct access to the kitchen and 3 parking spaces. Contact Bhavinee today to arrange a set an...



Web Ref RL21528  
<https://www.greeff.co.za>

## Features

Interior	Exterior	Sizes			
Bedrooms	4	Carports/Parkings	4	Land Size	600m <sup>2</sup>
Bathrooms	4	Pool	No		
Recep. Rooms	3				
Dining Rooms	1				



Bhavinee Siepman  
 082 797 6233  
 bhavinee@greeff.co.za

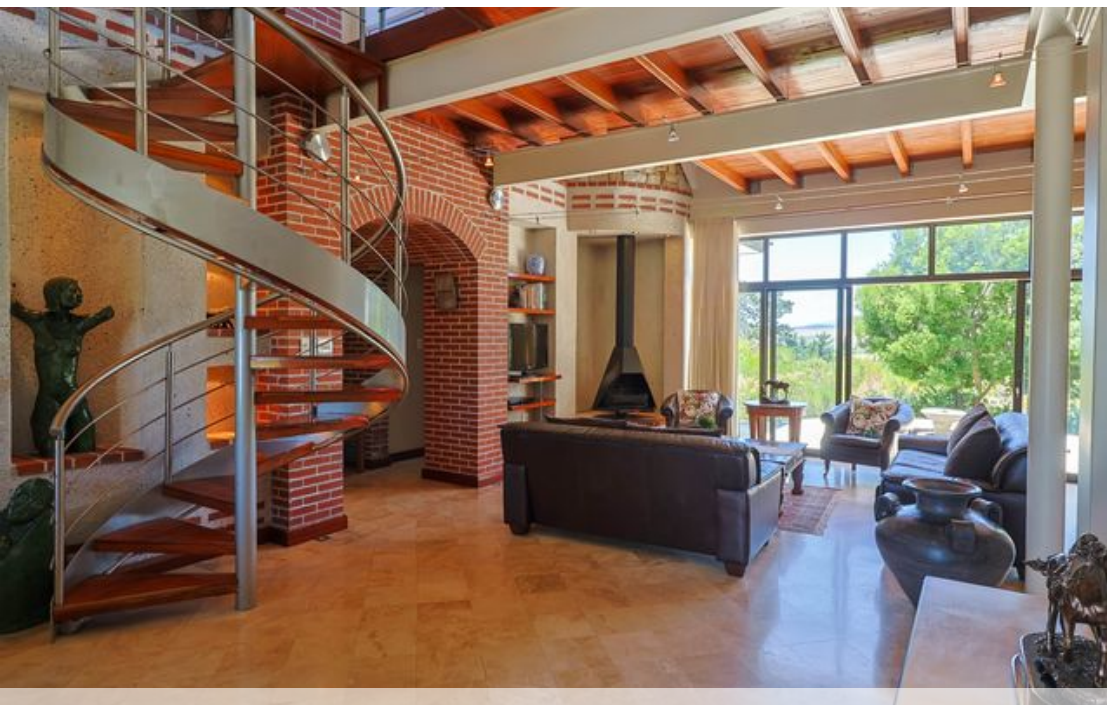
Helderberg  
 Cnr Main Road & Coronation Road, Somerset West,  
 7130  
 (021) 2058284 | helderberg@greeff.co.za

**GREEFF**

CHRISTIE'S  
 INTERNATIONAL REAL ESTATE

*Where it counts*

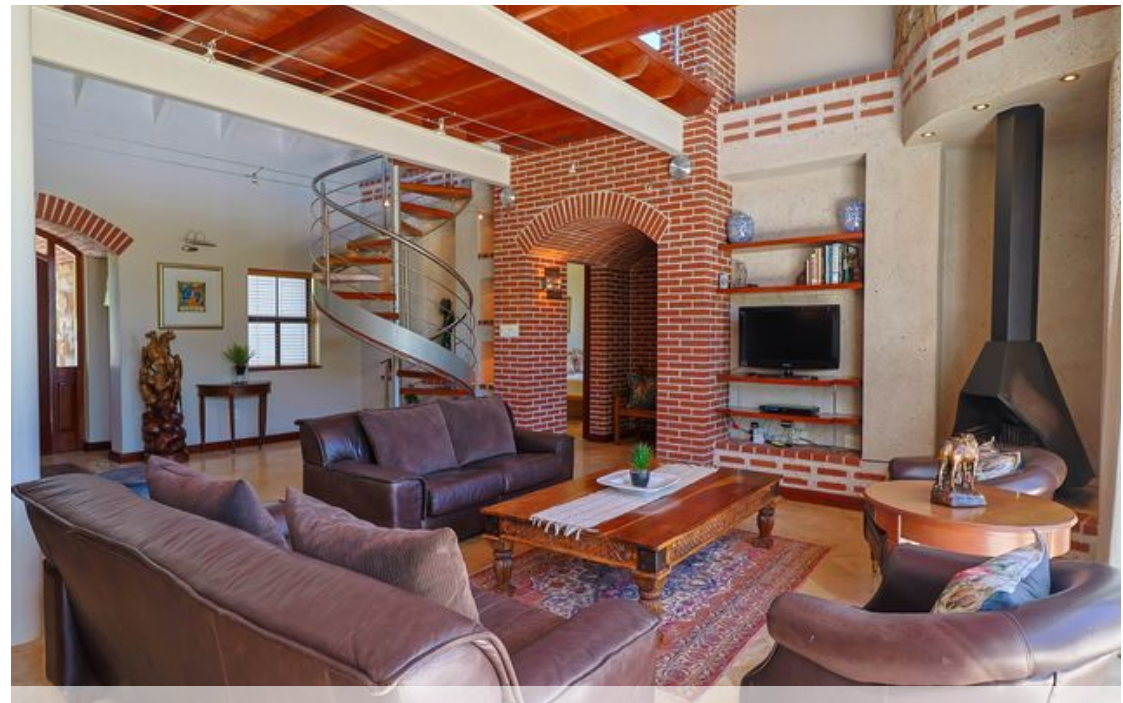
Exclusive Affiliates of Christie's International Real Estate. E & OE



● Kleinmond, Arabella

**GREEFF**

**CHRISTIE'S**  
INTERNATIONAL REAL ESTATE



Web Ref RL21528  
<https://www.greeff.co.za>