



● Kleinmond, Arabella

GREEFF

CHRISTIE'S
INTERNATIONAL REAL ESTATE



R8,200,000



Modern Home with lagoon views in Arabella

Exclusively Mandated. Step into this open- plan living residence nestled in the prestigious Arabella Estate. Rarely will you find a property in this location available in Arabella. Act quickly to secure this gem. This exceptional property investment boasts: - Breathtaking panoramic vistas of the Bot River Lagoon, 1st Fairway, and practice driving range. - A contemporary open-plan kitchen with an adjoining scullery providing direct entry from the double garage. - Three bedrooms, all with en suite bathrooms. - The luxurious master suite is a standout feature, showcasing stunning views of the 1st fairway and Bot River Lagoon. It also includes a walk-in wardrobe/dressing room and a gas fireplace. - An enclosed terrace with lagoon views for year-round pleasure. - The...



Web Ref RL22894
<https://www.greeff.co.za>

Features

Interior	Exterior	Sizes	
Bedrooms	3	Carports/Parkings	5
Bathrooms	3	Pool	No
Recep. Rooms	3	Floor Size	320m ²
Dining Rooms	1	Land Size	600m ²



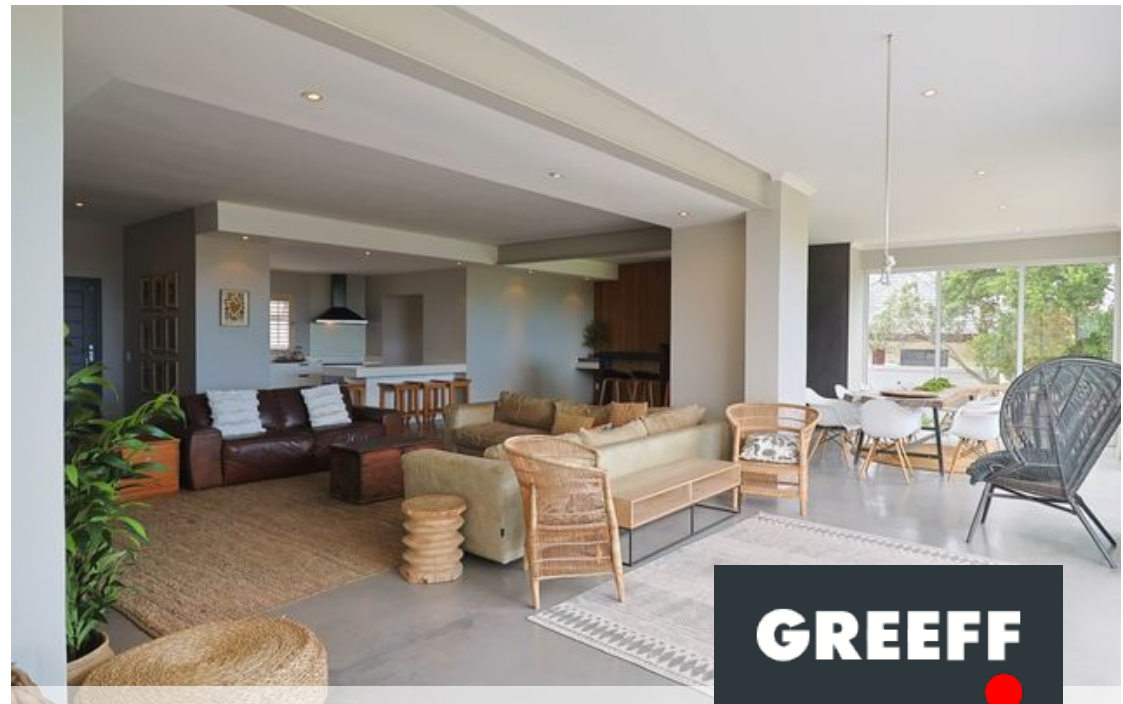
Bhavinee Siepman
 082 797 6233
bhavinee@greeff.co.za

Whale Coast
 173 Main Road , Hermanus, Western Cape, 7200
 (028) 3122241 | whalecoast@greeff.co.za



Where it counts

Exclusive Affiliates of Christie's International Real Estate. E & OE



● Kleinmond, Arabella

GREEFF

CHRISTIE'S
INTERNATIONAL REAL ESTATE



Web Ref RL22894
<https://www.greeff.co.za>