



● Kleinmond, **Kleinmond Central**

**GREEFF**



**CHRISTIE'S**  
INTERNATIONAL REAL ESTATE



**R3,150,000**



*Brand New Dream Home – Modern Living Awaits You*

Joint Mandate. This contemporary home combines sleek, modern design with great functionality. Double-volume open-plan living areas flow effortlessly into an undercover braai area, perfect for indoor-outdoor entertaining. The living room is enhanced by an exclusive chandelier, adding a touch of luxury. The kitchen is fitted with an electric stove, dishwasher connection and ample cupboard space topped with sleek Caesarstone tops. The master bedroom is a serene retreat with a large full bathroom featuring his and hers vanities and a corner bath – perfect for unwinding after a hard day’s work. Lie in your bed and enjoy beautiful mountain views. A second bathroom services two guest bedrooms. The unique under-roof entrance offers direct access to both the garages and...



Web Ref RL23821  
<https://www.greeff.co.za>

**Features**

Interior	Exterior	Sizes			
Bedrooms	3	Carports/Parkings	6	Floor Size	160m <sup>2</sup>
Bathrooms	2	Pool	No	Land Size	595m <sup>2</sup>
Recep. Rooms	2				
Dining Rooms	1				



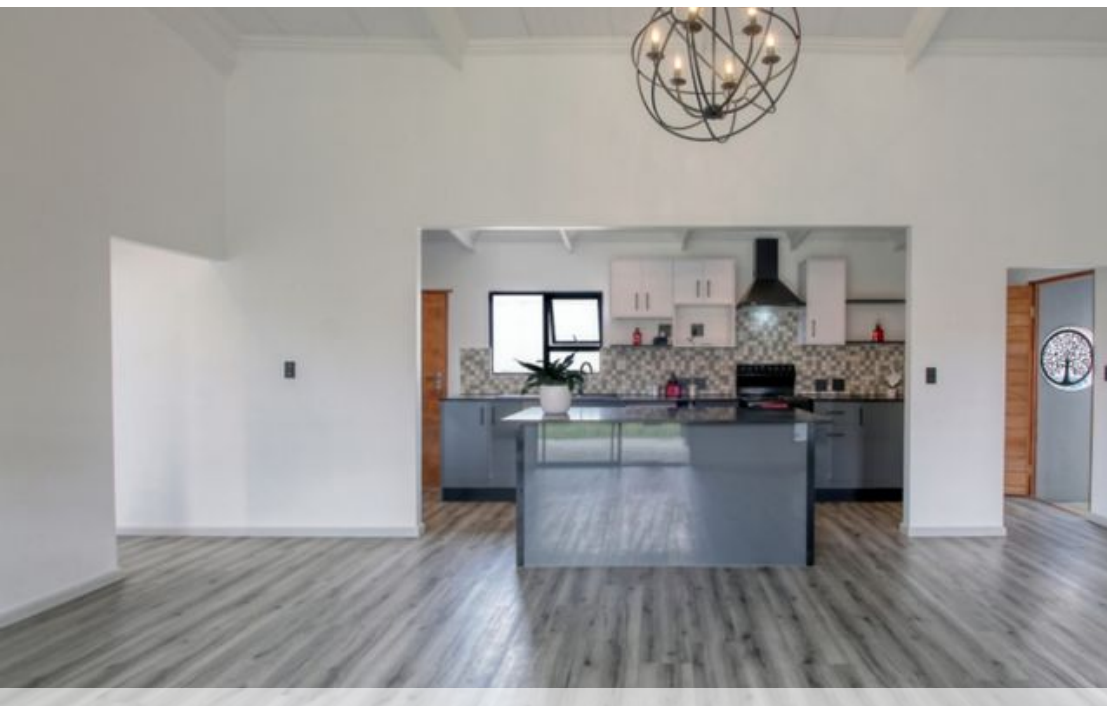
Lorraine Henning  
 083 296 4821  
[lorraine@greeff.co.za](mailto:lorraine@greeff.co.za)

Whale Coast  
 173 Main Road , Hermanus, Western Cape, 7200  
 (028) 3122241 | [whalecoast@greeff.co.za](mailto:whalecoast@greeff.co.za)



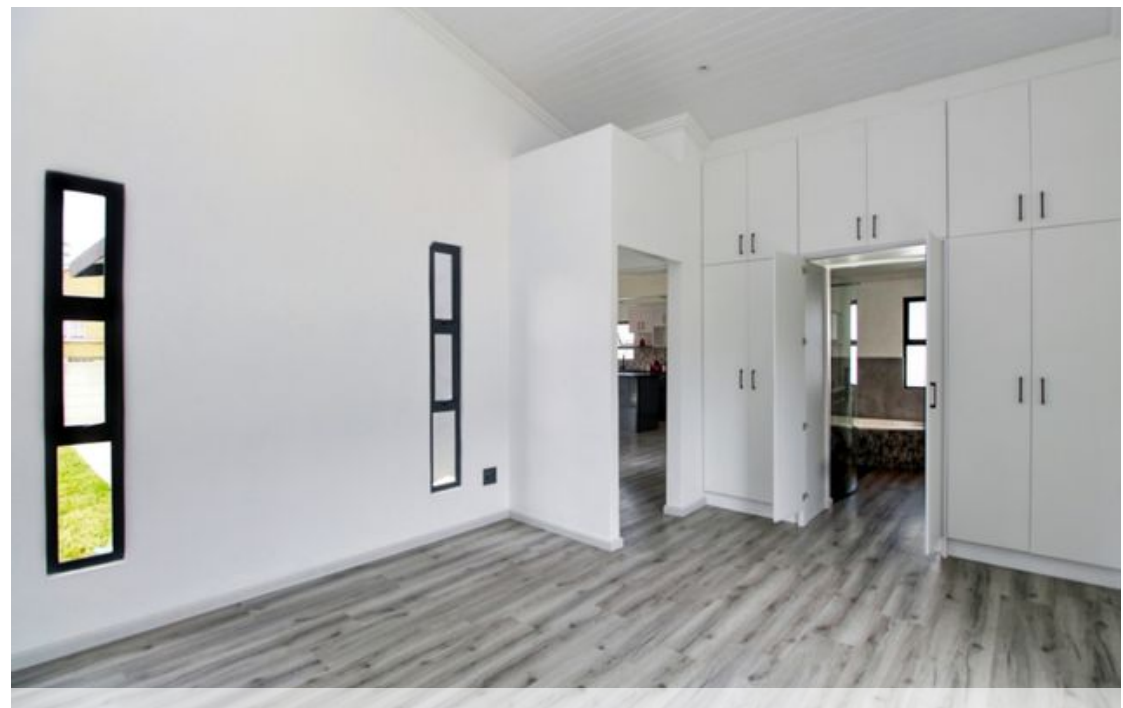
*Where it counts*

Exclusive Affiliates of Christie's International Real Estate. E & OE



● Kleinmond, Kleinmond Central





Web Ref RL23821  
<https://www.greeff.co.za>