



● Kleinmond, Palmiet

**GREEFF**



CHRISTIE'S  
INTERNATIONAL REAL ESTATE



**R12,695,000**

 4
  4.5
  6

*Your Perfect Blend of Luxury, Location, and Lifestyle.*

Prepared to be amazed! Characterized by voluminous open-concept spaces and windows of double-glazed glass, the contemporary design flaunts a sublime ocean panorama to the south and partial mountain views to the north. Nico van der Meulen's sleek architecture is complemented by impeccable finishes and exceptional attention to detail in the blu\_line custom-fitted luxury open-plan gourmet kitchen. A clever play with seemingly randomly placed windows maximises ambient light. Summer living is supported by the courtyard pool and sliding doors (as well as windows) connecting interior and exterior spaces. Underfloor heating throughout and 3 fireplaces ensure all-season comfort and cosiness. A graceful staircase links the stylish ground level to the equally understated upper...



Web Ref RL23714  
<https://www.greeff.co.za>

## Features

Interior	Exterior	Sizes
Bedrooms	4	Floor Size
Bathrooms	4.5	Land Size
Recep. Rooms	2	
Dining Rooms	1	
	Carports/Parkings	6
	Pool	Yes
		Floor Size
		Land Size
		495m <sup>2</sup>
		595m <sup>2</sup>



Lorraine Henning  
 083 296 4821  
[lorraine@greeff.co.za](mailto:lorraine@greeff.co.za)

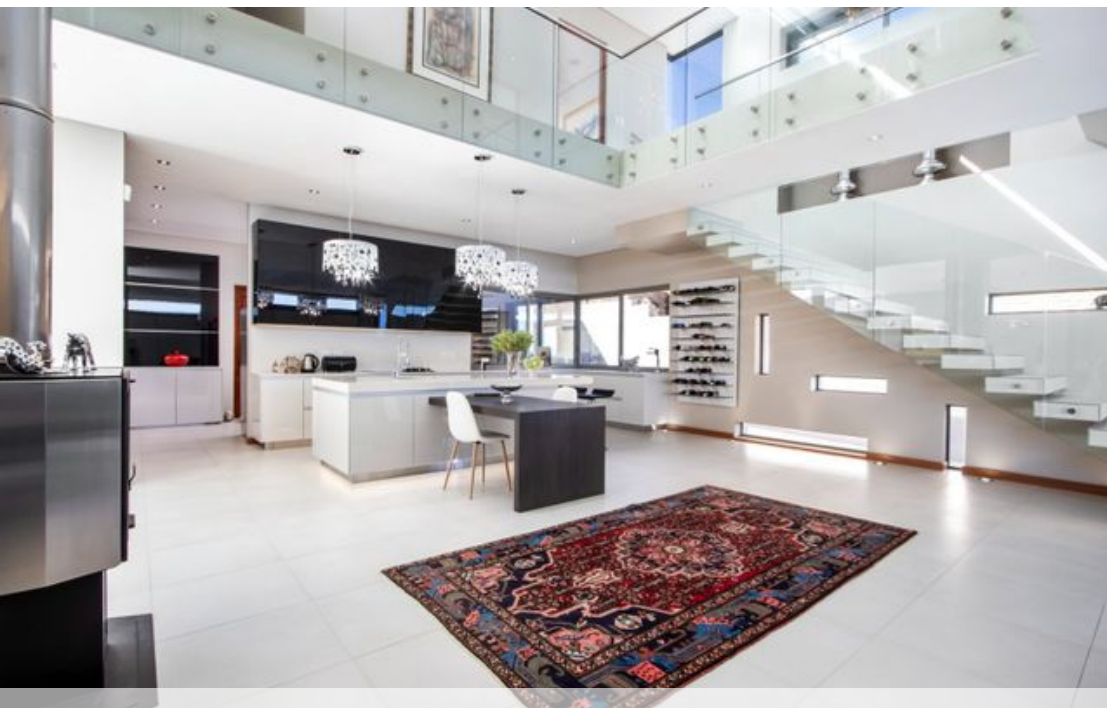
Whale Coast  
 173 Main Road , Hermanus, Western Cape, 7200  
 (028) 3122241 | [whalecoast@greeff.co.za](mailto:whalecoast@greeff.co.za)

**GREEFF**

CHRISTIE'S  
 INTERNATIONAL REAL ESTATE

*Where it counts*

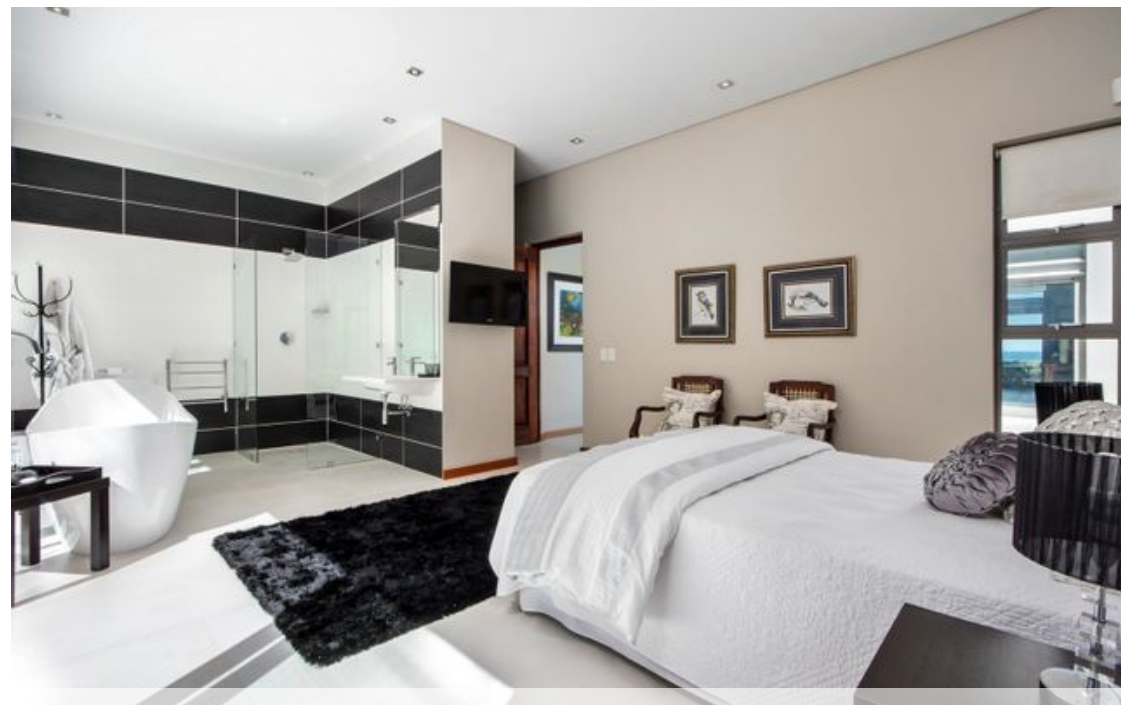
Exclusive Affiliates of Christie's International Real Estate. E & OE



● Kleinmond, Palmiet

**GREEFF**

**CHRISTIE'S**  
INTERNATIONAL REAL ESTATE



Web Ref RL23714  
<https://www.greeff.co.za>