



● Kraaifontein, **Bonnie Brae**

**GREEFF**

CHRISTIE'S  
INTERNATIONAL REAL ESTATE



**R2,595,000**



***\*\*Elevated Modern Living: The Perfect Fusion of Style, Comfort, and Seclusion\*\****

**\*\*Elevated Modern Living: The Perfect Fusion of Style, Comfort, and Seclusion\*\*** Welcome to your ideal sanctuary! Situated in the desirable Stonewood Estate, this pristine 3-bedroom residence epitomizes the perfect fusion of style, comfort, and privacy, meticulously crafted for contemporary living. Upon entering, you'll be captivated by the centerpiece of the home: a newly renovated kitchen that beautifully marries sleek, modern aesthetics with practical functionality. Featuring generous storage and a water point for a dishwasher, this space is both visually appealing and highly efficient. An additional water point in the garage offers added convenience for your washing machine, streamlining your daily tasks. The open-plan, tiled lounge area is both



Web Ref RL24108  
<https://www.greeff.co.za>

## Features

Interior	Exterior	Sizes			
Bedrooms	3	Carports/Parkings	4	Floor Size	137m <sup>2</sup>
Bathrooms	2	Pool	No	Land Size	283m <sup>2</sup>
Recep. Rooms	1				



Liza Botha  
 082 321 1451  
[liza@greeff.co.za](mailto:liza@greeff.co.za)

Durbanville  
 13 Lindenberg Road, , Durbanville  
 (083) 2657200 | [durbanville@greeff.co.za](mailto:durbanville@greeff.co.za)

**GREEFF**

CHRISTIE'S  
 INTERNATIONAL REAL ESTATE

*Where it counts*

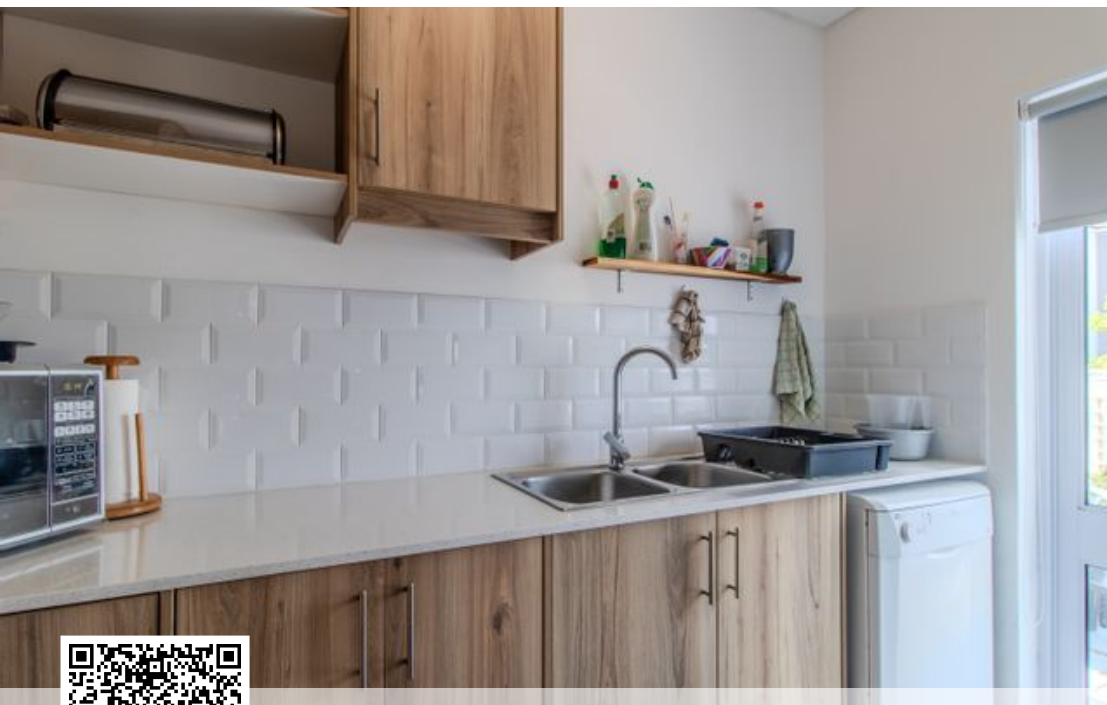
Exclusive Affiliates of Christie's International Real Estate. E & OE



● Kraaifontein, **Bonnie Brae**

**GREEFF**

**CHRISTIE'S**  
INTERNATIONAL REAL ESTATE



Web Ref RL24108  
<https://www.greeff.co.za>