



● Mitchells Plain, **Mandalay**

GREEFF



CHRISTIE'S
INTERNATIONAL REAL ESTATE



R1,600,000

 3
  1.5
  3

Modern Renovated Three bedroom Home for Sale

Welcome to this stunning, modern renovated three-bedroom house, perfectly blending style and functionality. Key features:

- Welcoming entrance hall, setting the tone for this beautiful home
- Modern kitchen with ample cupboards, granite countertops, glass hob, extractor fan and eye-level oven and warmer
- Fully tiled throughout for effortless maintenance
- Open-plan lounge and dining area, perfect for entertaining
- Cozy fireplace in the lounge, with doors leading out to the spacious backyard
- Extensively renovated bathroom with stand-alone bath, shower
- Separate toilet
- Linen cupboard for added convenience
- Single garage and double carport providing ample undercover parking
- Paved front yard, fully enclosed with pedestrian gate and main gate
- Secure parking...



Web Ref RL24103
<https://www.greeff.co.za>

Features

Interior	Exterior	Sizes	
Bedrooms	3	Carports/Parkings	3
Bathrooms	1.5	Pool	No
Recep. Rooms	1		
		Land Size	568m ²



Beverly Coetzee
 081 271 1858
beverly@greeff.co.za

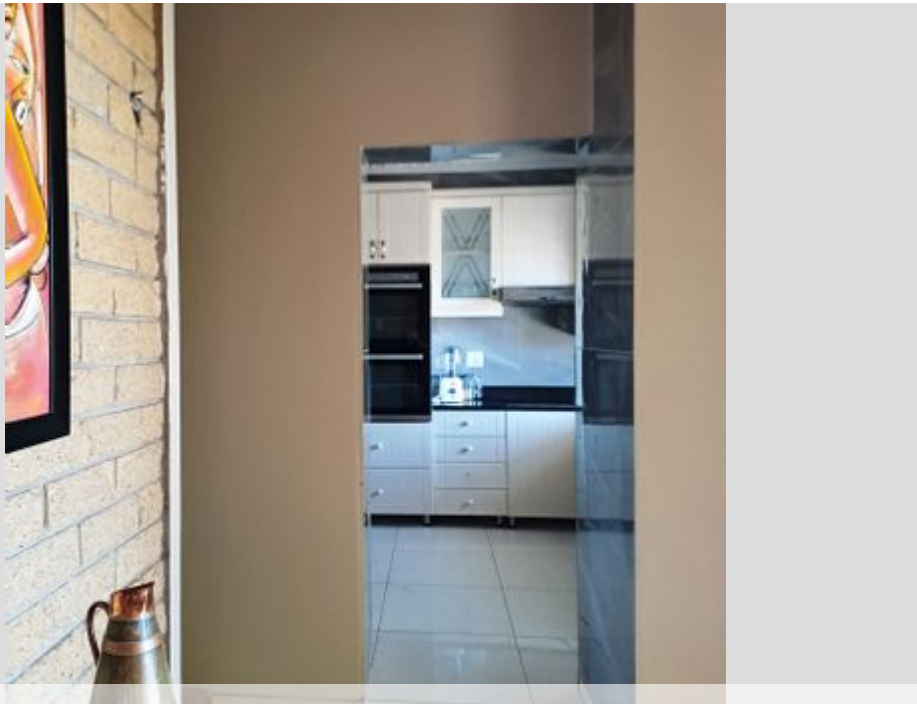
Head Office
 262 Main Road, Kenilworth, Cape Town
 (021) 7634120 | communications@greeff.co.za

GREEFF

CHRISTIE'S
INTERNATIONAL REAL ESTATE

Where it counts

Exclusive Affiliates of Christie's International Real Estate. E & OE



● Mitchells Plain, Mandalay



Web Ref RL24103
<https://www.greeff.co.za>